



RT-AC52U B1 AC750 Dual Band 802.11ac Router



Quick Start Guide

NOTE: For more details on the features of the wireless router, please refer to the user manual included in the Utility CD.

ASUS Recycling/Takeback Services

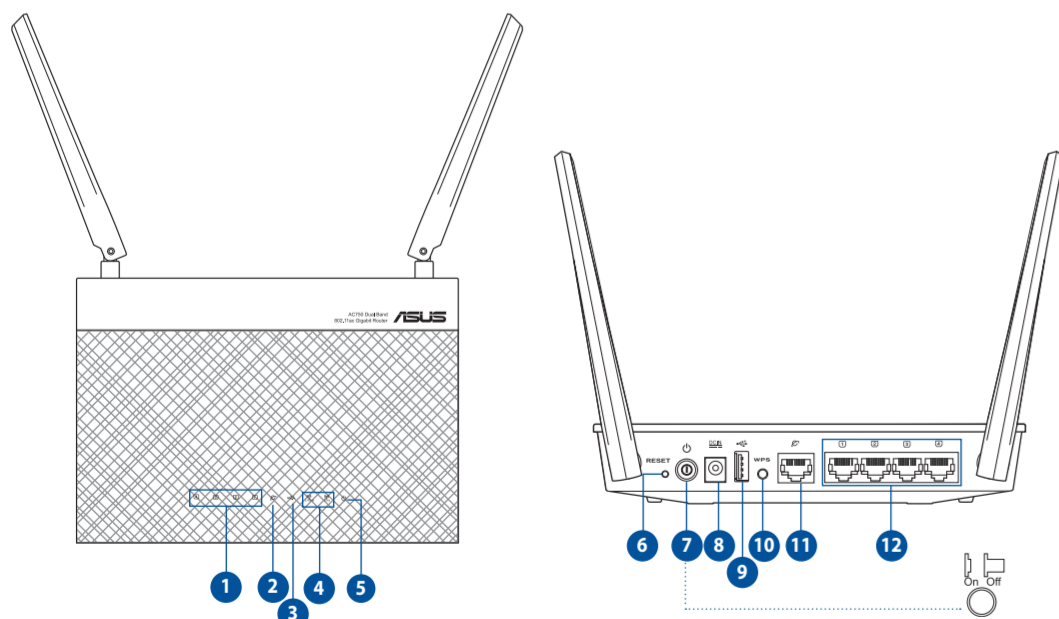
ASUS recycling and takeback programs come from our commitment to the highest standards for protecting our environment. We believe in providing solutions for you to be able to responsibly recycle our products, batteries, other components, as well as the packaging materials. Please go to <http://csr.asus.com/english/Takeback.htm> for the detailed recycling information in different regions.

Package Contents

- RT-AC52U B1 Wireless Router
- Network cable (RJ-45)
- Support CD (User Manual/utilities)
- AC adapter
- Quick Start Guide
- Warranty card

NOTE: If any of the items is damaged or missing, please contact your retailer.

A quick look

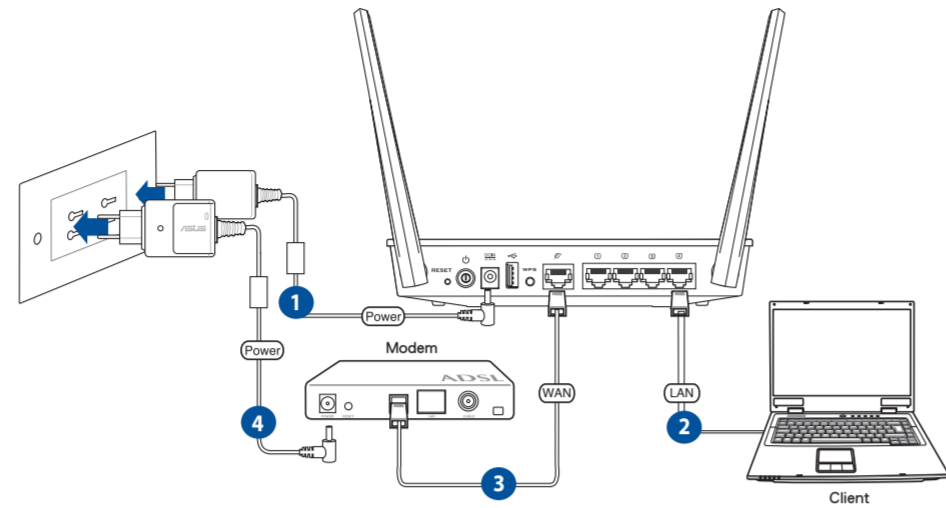


1) LAN 1~4 LED	5) Power LED	9) USB port
2) WAN (Internet) LED	6) Reset button	10) WPS button
3) USB LED	7) Power switch	11) Gigabit WAN (Internet) port
4) 2.4GHz / 5GHz LED	8) Power (DC-IN) port	12) Gigabit LAN 1~4 ports

CAUTION! DO NOT throw this product in municipal waste. This product has been designed to enable proper reuse of parts and recycling. This symbol of the crossed out wheeled bin indicates that the product (electrical and electronic equipment) should not be placed in municipal waste. Check local regulations for disposal of electronic products.

Setting up a Home Network - Router Mode

1. Connect your devices.



- Insert your wireless router's AC adapter to the DC-IN port and plug it to a power outlet.
- Using the bundled network cable, connect your computer to your wireless router's LAN port.
- Using another network cable, connect your modem to your wireless router's WAN port.
- Insert your modem's AC adapter to the DC-IN port and plug it to a power outlet.

IMPORTANT! Ensure that the WAN and LAN LEDs are blinking.

NOTE: Before you proceed, disconnect the wires/cables from your existing modem setup. After two minutes, reconnect the wires/cables.

3. Setup complete.



Français

- Connectez les périphériques.
- Lancez votre navigateur Web puis suivez les étapes du gestionnaire de configuration rapide d'Internet en ligne (QIS).
- La configuration est terminée.

Italiano

- Collegare le periferiche.
- Avviare il browser web e seguire la procedura QIS (Quick Internet Setup).
- La configurazione è stata completata.

Hrvatski

- Spojite uređaje.
- Pokrenite internetski preglednik i pratite postupak za brzo podešavanje za Internet (QIS).
- Podešavanje je dovršeno.

Česky

- Připojte zařízení.
- Spusťte webový prohlížeč a postupujte podle kroků Rychlého nastavení Internetu (QIS).
- Instalace je dokončena.

Nederlands

- Sluit uw apparaten aan.
- Start de webbrower en volg de QIS-stappen (Quick Internet Setup (snelle internetinstelling)).
- De instelling is voltooid.

Suomi

- Kytke laitteet.
- Käynnistä verkkoselain ja noudata QIS-asennuksen vaiheita.
- Asennus on valmis.

Magyar

- Csatlakoztassa az eszközöket.
- Indítsa el a webböngészőt, és kövesse a gyors internetes beállítás (QIS) lépéseit.
- A beállítás befejeződött.

Latviski

- Savienojiet savas ierices.
- Palaidiet tīmekļa pārlūku un izpildiet Quick Internet Setup (Ātrās interneta palaišanas) (QIS) soļus.
- Iestatīšana ir pabeigta.

Srpski

- Povežite svoje uređaje.
- Pokrenite internet pregledač i pratite korake za Brzo internet podešavanje (QIS).
- Podešavanje završeno.

Polski

- Podłącz swoje urządzenia.
- Uruchom przeglądarkę internetową i postępuj zgodnie z poleceniami Szybkiej konfiguracji Internetu (QIS).
- Konfiguracja została zakończona.

Română

- Conectați dispozitivele dvs.
- Lansați browser-ul web și urmați pașii de Conectare Rapidă la Internet (QIS).
- Conectarea este finalizată.

Español

- Conecte sus dispositivos.
- Abra su explorador web y siga los pasos indicados por la función Quick Internet Setup rápida de Internet.
- Ha finalizado la configuración.

Slovenščina

- Pripojte svoje zariadenja.
- Spustite internetoví prehladač a postupujte podľa krokov rýchleho nastavenia internetu (QIS).
- Nastavenie je dokončené.

Українська

- Підключіть пристрої.
- Запустіть браузер і дотримуйтеся інструкцій для Швидкого з'єднання з мережею Інтернет (QIS).
- Налаштування завершено.

繁體中文

- 連接裝置。
- 開啟網頁瀏覽器並按照網路設定精靈 (QIS) 的步驟操作。
- 設定完成。

Deutsch

- Schließen Sie Ihre Geräte an.
- Starten Sie einen Web-Browser und folgen Sie den Internet-Schnelleinstellungsschritten (QIS).
- Die Einrichtung ist fertig.

Русский

- Подключите ваши устройства.
- Запустите браузер и следуйте инструкциям быстрого подключения к Интернету (QIS).
- Установка завершена.

Български

- Свържете устройствата.
- Стартирайте уеб браузъра и следвайте стъпките в Quick Internet Setup (QIS) (Бързи интернет настройки).
- Конфигурирането приключи.

Dansk

- Tilslut enhederne.
- Start webbrowsersen og følg quick-internetopsætning (QIS) trinene.
- Opsætning fuldført.

Eesti

- Ühendage seadmed.
- Käivitage veebibrauser ja järgige viisardi Quick Internet Setup (Interneti-ühenduse kiirhäälestus (QIS)) samme.
- Häälestus on lõpule viidud.

Ελληνικά

- Συνδέστε τις συσκευές σας.
- Εκκινήστε το πρόγραμμα πλοήγησης στο διαδίκτυο και ακολουθήστε τα βήματα της Γρήγορης Εγκατάστασης Internet (QIS).
- Η εγκατάσταση έχει ολοκληρωθεί.

Tiếng Việt

- Kết nối các thiết bị.
- Bắt trình duyệt web và thực hiện theo các bước Thiết lập internet nhanh (QIS).
- Thiết lập xong.

Lietuvių

- Prijunkite prietaisus.
- Paleiskite interneto naršyklę ir vadovaukitės greitos internetinės sąrankos (QIS) nuorodomis.
- Sąranka baigta.

Norsk

- Koble til enhetene dine.
- Start nettleseren og følg trinene til Quick Internet Setup (QIS) (Rask oppsett av Internet).
- Oppsettet er ferdig.

Portugués

- Ligue os dispositivos.
- Abra o navegador da web e siga as instruções para configuração rápida da Internet.
- A configuração fica assim concluída.

Slovensky

- Pripojte svoje zariadenia.
- Spustite internetoví prehliadač a postupujte podľa krokov stručného návodu pre nastavenie internetu (QIS).
- Nastavenie je dokončené.

Svenska

- Anslut dina enheter.
- Öppna webbläsaren och följ stegen i QIS (snabb Internet-opsättning).
- Installeringen slutförd.

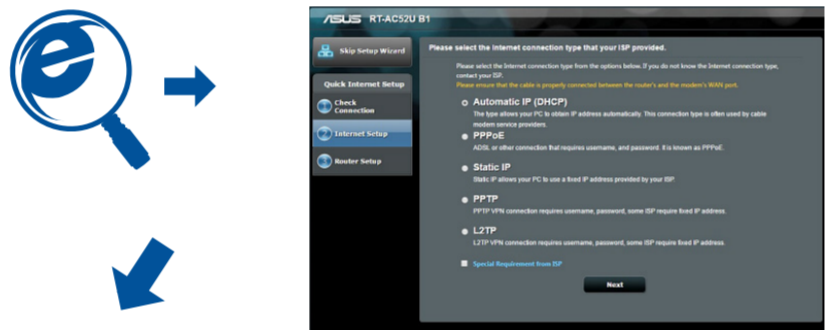
Türkçe

- Aygıtlarınızı bağlayın.
- Web tarayıcınızı açın ve Quick Internet Setup (Hızlı İnternet Kurulumu) (QIS) adınımlarını izleyin.
- Kurulum tamamlanır.

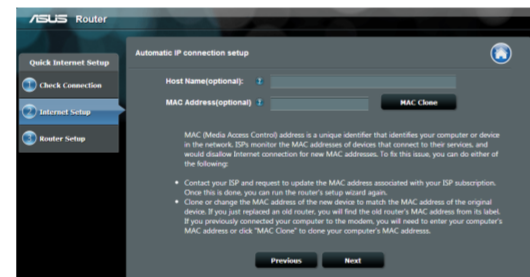
简体中文

- 连接设备。
- 开启网页浏览器并按照网络设置向导 (QIS) 的步骤操作。
- 设置完成。

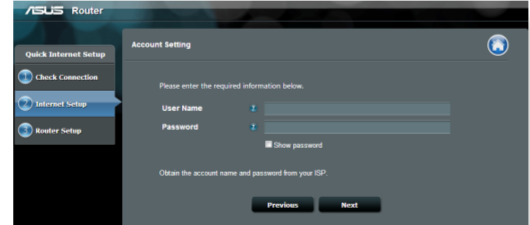
2. Launch the web browser and follow the Quick Internet Setup (QIS) steps.



for Automatic IP (DHCP)



for PPPoE, PPTP, and L2TP



NOTES:

- If the QIS web page does not appear after launching the web browser, disable the proxy settings on the web browser.
- If QIS does not launch automatically, follow these steps to manually launch QIS:
 - On your web browser, key in <http://router.asus.com>. Use the default username **admin** and password **admin** to log into the user interface.
 - Click **Quick Internet Setup** on the left panel on the Network Map page.
 - The auto-detection of your ISP connection type takes place when you configure the wireless router for the first time or when your wireless router is reset to its default settings.

IMPORTANT! Obtain the necessary information from your ISP about the Internet connection type.

Using AiCloud

2. Connect your smart device to your network. Follow the instructions to complete the AiCloud setup process.



Using AiCloud

1. From Google Play Store or Apple Store, download and install the ASUS AiCloud app to your smart device.



IMPORTANT! Obtain the necessary information from your ISP about the Internet connection type.

