



# Enhanced 802.11g Portable Wireless 4-in-1 Router (WL-330gE)



# Contents

Conventions .....	2
Package contents.....	3
System requirements .....	3
Device installation .....	4
Configuration.....	5
Operation modes .....	5
LED indicators.....	10

## Conventions

To make sure that you perform certain tasks properly, take note of the following symbols used throughout this guide.



**WARNING:** Information to prevent injury to yourself when trying to complete a task.



**CAUTION:** Information to prevent damage to the components when trying to complete a task.



**IMPORTANT:** Information that you **MUST** follow to complete a task.



**NOTE:** Tips and additional information to aid in completing a task.

## Package contents

Check the following items in your ASUS WL-330gE Portable Wireless AP package. Contact your retailer if any item is damaged or missing.

- ☒ ASUS Portable Wireless AP (WL-330gE)
- ☒ Universal power adapter and plug (5V/1A, 100V ~ 240V)
- ☒ USB power cord
- ☒ RJ-45 cable
- ☒ Support CD (manual, utilities, GPL)
- ☒ Quick Start Guide



---

Use only the power adapter and plug that came with the package. Using other power adapter and plug may damage the device!

---

## System requirements

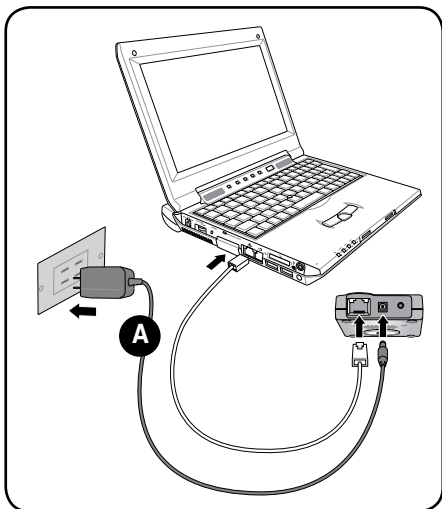
Before installing the ASUS WL-330gE Portable Wireless AP, make sure that your computer meets the following requirements:

- Operating System: Windows® 2000, XP, or Vista
- An Ethernet RJ-45 port (10Base-T/100Base-TX)
- At least one IEEE 802.11b/g device with wireless capability
- An Internet browser

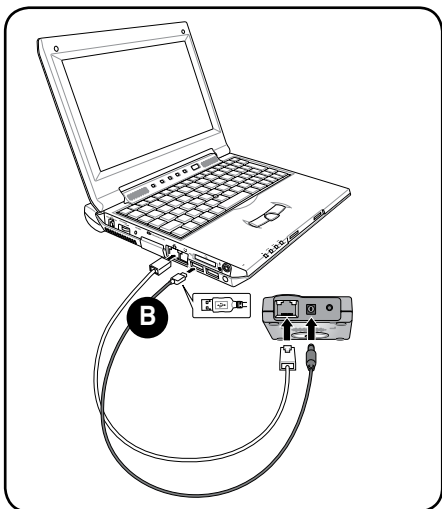
## Device installation

1. Insert one end of the supplied RJ-45 cable to the WL-330gE Ethernet port.
2. Insert the other end of the RJ-45 cable to your computer.
3. Do either of the following:

Connect the power adapter plug to the WL-330gE DC-IN socket and connect the power adapter to a wall socket (A).



Connect the USB power cord plug to the WL-330gE DC-IN socket and connect the USB connector into your computer's USB port (B).



# Configuration



In the Quick Setup Wizard, you can only configure WEP for security (open system). You can complete the share key and advanced security setup in the Advanced Settings page.

## Operation modes

The ASUS WL-330gE is designed with four (4) selective operation modes:

**Gateway, Access Point, Ethernet Adapter, and Universal Repeater.**



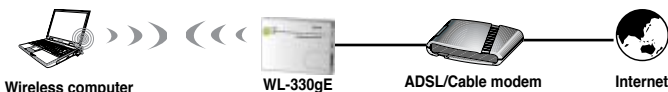
By default, the ASUS WL-330gE is set in the Gateway mode.

To enter the web configuration page:

1. Type **192.168.1.220** into the address box of your web browser to enter the web configuration page.
2. Use **admin** as the username and password. The Setup Wizard is then displayed.

### Gateway mode

In the Gateway mode, the ASUS WL-330gE connects to the Internet via an ADSL or a cable modem, and your network environment has multi-users using the same IP to ISP.

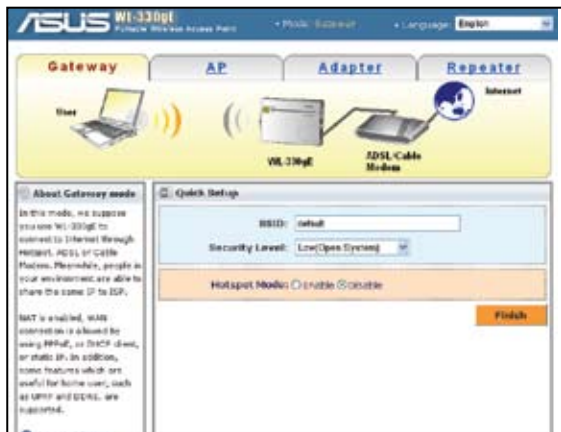


In the Gateway mode:

- NAT is enabled;
- WAN is allowed using PPPoE, DHCP client, or static IP; and
- UPnP and DDNS features, which are useful for home user, are supported.

To configure the ASUS WL-330gE in Gateway mode:

1. In the Mode Quick Setup page, click the **Gateway** tab. The Gateway page is displayed.



Disable your PC's proxy settings when using web configuration. Make sure the WL-330gE and your PC are under the same subnet. Check the contents of the Internet protocol (TCP/IP) settings of your local area connection.

2. Specify an SSID (Service Set Identifier), which is a unique identifier attached to packets sent over WLAN.
3. Select a security level to enable encryption methods:  
 Low(None): No security level.  
 Medium (WEP-64bits)  
 Medium (WEP-128 bits)  
 High (WPA-PSK/WPA-PSK)
4. (Optional) Choose **Enable** Hotspot Mode to connect to the hotspot wirelessly.
5. Click **Finish** to save the configuration.



After setting the ASUS WL-330gE in Gateway mode, you need to connect the WL-330gE's LAN port to an ADSL modem through an RJ45 cable. You can only set up your local network wirelessly such as through Windows® Zero Configuration or your wireless card utility on your PC.



You can set up the advanced functions. Click the **Advanced Setting** link to go to the Advanced Setting screen.

## Access Point (AP) mode

In the **Access Point (AP) mode**, you can connect the Ethernet port and your wireless devices into the same local area network (LAN).



To configure the ASUS WL-330gE in Access Point/AP mode:

1. In the Mode Quick Setup page, click the **AP** tab. The Access Point (AP) page is displayed.



2. Specify an SSID (Service Set Identifier), which is a unique identifier attached to packets sent over WLAN.
3. Select a security level to enable encryption methods:
  - Low(None): No security level.
  - Medium (WEP-64bits)
  - Medium (WEP-128 bits)
  - High (WPA-PSK/WPA-PSK)
4. Click **Finish** to save the configuration.

## Ethernet Adapter mode

In the **Ethernet Adapter mode**, you can enable any Ethernet-capable device to go wireless.



To configure the ASUS WL-330gE in Ethernet Adapter mode:

1. In the Mode Quick Setup page, click the **Adapter** tab. The Adapter page is displayed.



2. From the available list of devices in LAN, select the device you want to connect to.
3. Click **Connect**.



You can set up the advanced functions. Click the **Advance Settings** link to go to the Advance Settings screen.



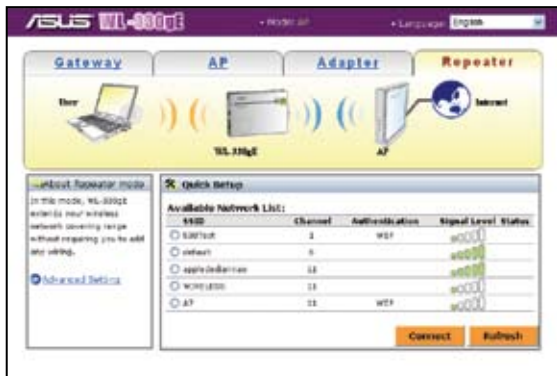
## Repeater mode

In the **Repeater mode**, you can use the ASUS WL-330gE to connect with your root router at home to extend your wireless coverage.



To configure the ASUS WL-330gE in Repeater mode:

1. In the Mode Quick Setup page, click the **Repeater** tab. The Repeater page is displayed.



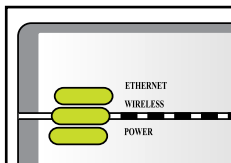
2. From the available list of devices in LAN, select the device you want to connect to.
3. Click **Connect**.



You can set up the advanced functions. Click the **Advance Settings** link to go to the Advance Settings screen.

# LED indicators

The ASUS WL-330gE comes with a Power, Wireless, and Ethernet LED indicators. Refer to the table below for LED indications.



LED	Status	Mode*	Indication
Ethernet	On	Router/AP/EA/URE	The RJ-45 cable is connected and the WL-330gE is connected to an Ethernet network.
	Off		The WL-330gE is off or is not connected to an Ethernet network.
Wireless	On	Router/AP/URE	Associated.
	Flashing	EA	Associated with an AP.
	Off	EA	Associating.
Power	On	Router/AP/URE	Not associated.
	Flashing	Router/AP/URE	No association with an AP.
	Off	EA	
Power	On	Router/AP/EA/URE	The WL-330gE is on and ready.
	Flashing	Router/AP/EA/URE	The WL-330gE is under "reset to default" mode.
	Off	Router/AP/EA/URE	The device is off.

\*Modes: **AP**: Access Point mode

**EA**: Ethernet adapter mode

**URE**: Universal repeater mode