



USB-N13

ASUS 802.11n Network Adapter



Quick Start Guide



NOTE: For more details and advanced configuration instructions, refer to the user manual included in the Utility CD.

EC Declaration of Conformity



We, the undersigned,	
Manufacturer:	ASUSTek COMPUTER INC.
Address, City:	No. 150, LI-TE RD., PEITOU, TAIPEI 112, TAIWAN R.O.C.
Country:	TAIWAN
Authorized representative in Europe:	ASUS COMPUTER GmbH
Address, City:	HARKORT STR. 21-23, 40880 RATINGEN
Country:	GERMANY

declare the following apparatus:

Product name :	ASUS 802.11n Network Adapter
Model name :	USB-N13

conform with the essential requirements of the following directives:

2004/108/EC-EMC Directive

<input checked="" type="checkbox"/> EN 55022:2007 Class B	<input checked="" type="checkbox"/> EN 55024:1998+A1:2001+A2:2003
<input checked="" type="checkbox"/> EN 61000-3-2:2006	<input checked="" type="checkbox"/> EN 61000-3-3:1995+A1:2001+A2:2005
<input checked="" type="checkbox"/> EN 55013:2001+A1:2003+A2:2006	<input checked="" type="checkbox"/> EN 61000-4-2:1995+A1:2001+A2:2001
<input checked="" type="checkbox"/> EN 55020:2007	<input checked="" type="checkbox"/> EN 61000-4-3:2006+A1:2008

1999/5/EC-R & TTE Directive

<input checked="" type="checkbox"/> EN 300 328 V1.7.1(2006-10)	<input checked="" type="checkbox"/> EN 301 489-1 V1.8.1(2008-04)
<input checked="" type="checkbox"/> EN 300 440-1 V1.4.1(2008-05)	<input checked="" type="checkbox"/> EN 301 489-3 V1.4.1(2002-08)
<input checked="" type="checkbox"/> EN 300 440-2 V1.2.1(2008-03)	<input checked="" type="checkbox"/> EN 301 489-4 V1.3.1(2002-08)
<input checked="" type="checkbox"/> EN 301 511 V9.0.2(2003-03)	<input checked="" type="checkbox"/> EN 301 489-7 V1.3.1(2005-11)
<input checked="" type="checkbox"/> EN 301 908-1 V3.2.1(2007-05)	<input checked="" type="checkbox"/> EN 301 489-9 V1.4.1(2007-11)
<input checked="" type="checkbox"/> EN 301 908-2 V3.2.1(2007-05)	<input checked="" type="checkbox"/> EN 301 489-17 V1.3.2(2008-04)
<input checked="" type="checkbox"/> EN 301 893 V1.4.1(2005-03)	<input checked="" type="checkbox"/> EN 301 489-24 V1.4.1(2007-09)
<input checked="" type="checkbox"/> EN 50360:2001	<input checked="" type="checkbox"/> EN 302 326-2 V1.2.2(2007-06)
<input checked="" type="checkbox"/> EN 50371:2002	<input checked="" type="checkbox"/> EN 302 326-3 V1.3.1(2007-09)
<input checked="" type="checkbox"/> EN 62311:2008	<input checked="" type="checkbox"/> EN 301 357-2 V1.3.1(2006-05)
<input checked="" type="checkbox"/> EN 50385:	

2006/95/EC-LVD Directive

<input checked="" type="checkbox"/> EN 60950-1:2006	<input checked="" type="checkbox"/> EN 60065:2002+A1:2006
---	---

CE marking



(EC conformity marking)

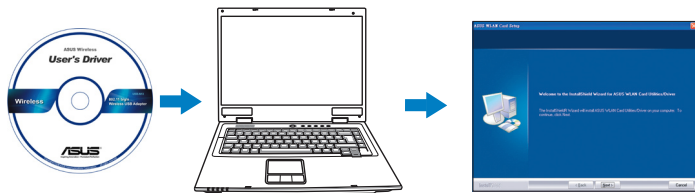
Position : CEO
Name : Jerry Shen

Declaration Date: Aug. 13, 2009

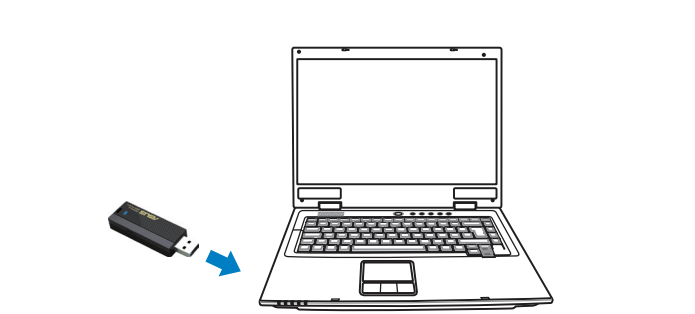
Year to begin affixing CE marking:2009

Signature : _____

1. Insert the support CD into the optical drive and follow the onscreen instructions to complete the installation.



2. Plug the wireless adapter into your computer's USB port.



3. Setup is completed.



English

1. Insert the support CD into the optical drive and follow the onscreen instructions to complete the installation.
2. Plug the wireless adapter into your computer's USB port.
3. Setup is completed.

For more details, please refer to the user manual included in the Utility CD.



German

- Legen Sie die Support-CD in das optische Laufwerk ein und folgen sie den Bildschirmanweisungen, um die Installation zu beenden.
- Stecken Sie den Wireless-Adapter in den USB-Anschluss Ihres Computers.
- Die Einrichtung ist fertig.

Pour plus de détails, référez-vous au manuel de l'utilisateur fourni inclut dans le CD d'utilitaires.



Italian

- Inserire il CD di Supporto nell'unità ottica e seguire le istruzioni sullo schermo.
- Inserire l'adattatore wireless nella porta USB del computer.
- La configurazione è stata completata.

Per approfondimenti, consultare il Manuale Utente contenuto nel CD delle utilità.



Lithuanian

- Įdėkite pagalbos kompaktinį (CD) diską į optinę tvarkyklę ir vadovaukitės nuorodomis ekrane, norėdami baigti įdiegimą.
- Prijunkite bevielį adapterį prie savo kompiuterio USB prievado.
- Sąranka baigta.

Daugiau informacijos ieškokite vartotojo vadove, esančiame jūsų programinio paketo kompaktiniame (CD) diske.

Setting up a Home Network



Latvian

- Ielieciet atbalsta CD optiskajā diskzinī un izpildiet ekrānā redzamos norādījumus instalācijas veikšanai.
- Pievienojiet bezvadu adapteru datora USB portam.
- Iestatīšana ir pabeigta.

Sīkāk, lūdzu, lasiet lietotāja rokasgrāmatā, kas iekļauta utilītū CD.



Portuguese

- Insira o CD de suporte na unidade óptica e siga as instruções no ecrã para concluir a instalação.
- Ligue o adaptador de rede sem fios à porta USB do seu computador.
- A configuração fica assim concluída.

Para mais detalhes, consulte o manual do utilizador incluído no CD de Utilitários.



Romanian

- Introduceți CD de instalare în drive-ul optic și urmați instrucțiunile de pe ecran pentru a finaliza instalarea.
- Introduceți adaptorul wireless în portul USB al computerului dvs.
- Conectarea este finalizată.

Pentru mai multe detalii, vă rugăm referiți-vă la manualul de utilizare inclus în CD-ul de instalare.



Polish

- Włóż płytę CD z oprogramowaniem do napędu optycznego i postępuj zgodnie z instrukcjami wyświetlanymi na ekranie, celem zakończenia instalacji.
- Włóż kartę bezprzewodową do gniazda USB komputera.
- Konfiguracja została zakończona.

Szczegółowe informacje znajdują się w podręczniku użytkownika umieszczonym na płycie narzędziowej CD.



Spanish

- Inserte el CD de soporte en la unidad óptica y siga las instrucciones que aparecerán en la pantalla para llevar a cabo la instalación.
- Conecte el adaptador inalámbrico a un puerto USB de su equipo.
- Ha finalizado la configuración.

Si desea obtener más información, consulte el manual de usuario que encontrará en el CD de utilidades.



Ukrainian

- Вставте компакт-диск підтримки до оптичного дисководу і виконуйте інструкції на екрані, щоб завершити інсталяцію.
- Вставте бездротовий адаптер до порту USB на комп'ютері.
- Налаштування завершено.

Докладніше про це див. у керівництві користувача, яке входить до компакт-диску утиліт.



French

- Insérez le CD de support dans le lecteur optique puis suivez les instructions à l'écran pour terminer l'installation.
- Connectez l'adaptateur sans fil à un port USB de votre ordinateur.
- La configuration est terminée.

Pour plus de détails, référez-vous au manuel de l'utilisateur fourni inclut dans le CD d'utilitaires.



Dutch

- Stop de ondersteunings-cd in het optische station en volg de instructies op het scherm om de installatie te voltooien.
- Sluit de draadloze adapter aan op de USB-poort van uw computer.
- De instelling is voltooid.

Raadpleeg de handleiding die op de cd met hulpprogramma's is geleverd voor meer informatie.



Greek

- Εισάγετε το CD υποστήριξης στη μονάδα οπτικού δίσκου και ακολουθήστε τις οδηγίες που εμφανίζονται στην οθόνη για να ολοκληρώσετε την εγκατάσταση.
- Συνδέστε τον ασύρματο προσαρμογέα στη θύρα USB του υπολογιστή.
- Η εγκατάσταση έχει ολοκληρωθεί.

Για περισσότερες λεπτομέρειες, ανατρέξτε στο εγχειρίδιο χρήστη που περιλαμβάνεται στο CD βοηθητικών προγραμμάτων.



Russian

- Вставьте компакт-диск в оптический привод и следуйте инструкциям на экране.
- Подключите адаптер беспроводной сети к USB порту Вашего компьютера.
- Установка завершена.

Подробную информацию смотрите в руководстве пользователя на компакт-диске.



Estonian

- Sisestage tugi-CD optilisse kettaseadmesse ja järgige ekraanijuhiseid, et installimine lõpule viia.
- Ühendage traadita adapter arvuti USB porti.
- Häälestus on lõpule viitud.

Täpsemat teavet vt seadmega kaasnenud kasutusjuhendist utiliidi-CD-lt.



Hungarian

- Helyezze a támogató CD-t az optikai meghajtóba és kövesse a képernyőn megjelenő utasításokat a telepítés elvégzéséhez.
- Csatlakoztassa a vezeték nélküli adaptert a számítógép USB-csatlakozójához.
- A beállítás befejeződött.

További részletekért tekintse meg a felhasználói útmutatót, amely a segédprogramokat tartalmazó CD-n található.



Slovak

- Do optickej mechaniky vložte CD s podporou a inštaláciu vykonajte podľa pokynov na obrazovke.
- Pripojte adaptér bezdrôtovej komunikácie k USB portu počítača.
- Nastavenie je dokončené.

Viac podrobností v návode na obsluhu na CD s pomocnými programami.



Czech

- Vložte podpůrný disk CD do optické jednotky a dokončete instalaci podle zobrazených pokynů.
- Připojte bezdrátový adaptér k portu USB počítače.
- Instalace je dokončena.

Podrobnější informace viz uživatelská příručka na disku CD s nástroji.



Finnish

- Aseta tuki-CD-levy optiseen asemaan ja suorita asennus loppuun noudattamalla ruudun ohjeita.
- Liitä langaton sovitin tietokoneen USB-porttiin.
- Asennus on valmis.

Voit katsoa tarkempia tietoja apuohjelma-CD-levyllä olevasta käyttöoppaasta.



Bulgarian

- Поставете помощния CD диск в оптичното устройство и следвайте инструкциите на екрана, за да приключите инсталацията.
- Включете безжичния адаптер в USB порта на компютъра.
- Конфигурирането приключи.

За повече подробности се обърнете към упътването, включено в приложеното Utility CD.



Indonesian

- Masukkan CD dukungan ke drive optic, lalu ikuti petunjuk di layar untuk menyelesaikan penginstalan.
- Pasang adapter nirkabel ke port USB komputer Anda.
- Konfigurasi selesai.

Untuk informasi lebih lanjut, lihat panduan pengguna yang tersedia di CD Utilitas.



Thai

- ใส่แผ่น CD สนับสนุนลงในไดรฟ์ออปติคัลและทำตามขั้นตอนบนหน้าจอเพื่อทำการติดตั้งให้สมบูรณ์
- เสียบไวร์เลส อะแดปเตอร์ลงในพอร์ต USB ของคอมพิวเตอร์ของคุณ
- การตั้งค่าเสร็จสมบูรณ์

สำหรับรายละเอียดเพิ่มเติม โปรดดูคู่มือผู้ใช้ที่หามาในแผ่น CD ยูทิลิตี้



Turkish

- Destek CD'sini optik sürücüye takın ve kurulumu tamamlamak için ekran üzerindeki talimatları izleyin.
- Kabloşuz adaptörü bilgisayarın USB bağlantı noktasına takın.
- Kurulum tamamlanır.

Daha fazla bilgi için, lütfen Yardımcı Program CD'sinde bulunan kullanım kılavuzuna bakın.



T-Chinese

- 將驅動程式與應用程式光碟放入光碟機，並按照螢幕說明完成安裝。
- 將無線網路卡插入電腦的 USB 連接埠。
- 設定完成。

詳情請參考公用程式光碟中的使用手冊



S-Chinese

- 將驅動程序與应用程序光盘放入光驱，并按照屏幕说明完成安装。
- 将无线网卡插入电脑的 USB 端口。
- 设置完成。

更多详情，请参考应用程序光盘中的用户手册。



Korean

- 지원 CD를 옵티컬 드라이브에 넣고, 이어지는 지시에 따라 설치를 완료해 주십시오.
- 컴퓨터의 USB 포트에 무선 어댑터를 연결해 주십시오.
- 설정이 완료되었습니다.

참고: 자세한 정보 및 고급 구성 옵션에 관한 지시사항은 유틸리티 CD에 포함된 사용 설명서를 참고해 주십시오.



Japanese

- サポートCDを光学ドライブに入れ、スクリーン上の指示に従ってインストールを実行します。
- 無線アダプタをコンピュータのUSBポートに接続します。
- セットアップ完了です。

注意：詳細と拡張設定については、ユーティリティCDにあるユーザーマニュアルを参照ください。



Federal Communications Commission Statement

This device complies with Part 15 of the FCC Rules. Operation is subject to the following two conditions:

- This device may not cause harmful interference.
- This device must accept any interference received, including interference that may cause undesired operation.

This equipment has been tested and found to comply with the limits for a class B digital device, pursuant to part 15 of the FCC Rules. These limits are designed to provide reasonable protection against harmful interference in a residential installation.

This equipment generates, uses and can radiate radio frequency energy and, if not installed and used in accordance with the instructions, may cause harmful interference to radio communications. However, there is no guarantee that interference will not occur in a particular installation. If this equipment does cause harmful interference to radio or television reception, which can be determined by turning the equipment off and on, the user is encouraged to try to correct the interference by one or more of the following measures:

- Reorient or relocate the receiving antenna.
- Increase the separation between the equipment and receiver.
- Connect the equipment into an outlet on a circuit different from that to which the receiver is connected.
- Consult the dealer or an experienced radio/TV technician for help.

CAUTION: Any changes or modifications not expressly approved by the party responsible for compliance could void the user's authority to operate the equipment.

Prohibition of Co-location

This device and its antenna(s) must not be co-located or operating in conjunction with any other antenna or transmitter.

IMPORTANT NOTE:

Radiation Exposure Statement:

This equipment complies with FCC radiation exposure limits set forth for an uncontrolled environment. End users must follow the specific operating instructions for satisfying RF exposure compliance. To maintain compliance with FCC RF exposure compliance requirements, please follow operation instruction as documented in this manual.

Industry Canada statement:

This device complies with RSS-210 of the Industry Canada Rules. Operation is subject to the following two conditions: (1) This device may not cause harmful interference, and (2) this device must accept any interference received, including interference that may cause undesired operation.

IMPORTANT NOTE:

Radiation Exposure Statement:

This equipment complies with IC radiation exposure limits set forth for an uncontrolled environment. End users must follow the specific operating instructions for satisfying RF exposure compliance. To maintain compliance with IC RF exposure compliance requirements, please follow operation instruction as documented in this manual.

NCC Warning

經型式認證合格之低功率射頻電機，非經許可，公司、商號或使用者均不得擅自變更頻率、加大功率或變更原設計之特性及功能。

低功率射頻電機之使用不得影響飛航安全及干擾合法通信；經發現有干擾現象時，應立即停用，並改善至無干擾時方得繼續使用。

前項合法通信，指依電信法規定作業之無線電通信。

低功率射頻電機須忍受合法通信或工業、科學及醫療用電波輻射性電機設備之干擾。

REACH

Complying with the REACH (Registration, Evaluation, Authorisation, and Restriction of Chemicals) regulatory framework, we published the chemical substances in our products at ASUS REACH website at <http://green.asus.com/english/REACH.htm>.

Hot Products



RT-N10

- With 802.11n feature, fully compatible with 802.11b/g
- 150Mbps High Speed
- Broadcom Accelerange™ deliver 300%* Signal coverage
- CD-Free Installation: Simply launch the browser and automatically guide user to link to Internet
- Manual-Free Management: Web-based network map help user easily manage the network
- 2-Network-in-1: Provide extra network for prioritized bandwidth and access control



RT-N12

- 802.11n certified, fully compatible with 802.11b/g
- SuperSpeedN up to 300Mbps data rate
- Broadcom Accelerange™ deliver 450%* Signal coverage.
- Auto detect your internet connection type and manual free setup
- 4-Network-in-1: Provide extra network for prioritized bandwidth and access control.
- EZ Switch: Switch your operation mode only ONE-Touch
- 30,000 sessions for stable P2P download



RT-N13

- 802.11n draft 2.0 certified, fully compatible with 802.11b/g
- SuperSpeedN up to 300Mbps data rate, suitable for seamless multimedia stream
- EZConfig - WPS and WCN let any user setup secure Wi-Fi network within minutes
- EZQoS (Quality of Service)- Powerful and easily-operated bandwidth management engine streamlines your Gaming/Audio/Video experience
- EZ UI - Auto detection, no more setup



RT-N13U

- 802.11n certified, fully compatible with 802.11b/g
- SuperSpeedN up to 300Mbps data rate
- Auto detect your internet connection type and manual free setup
- Universal repeater mode : extend your wireless signal coverage only by 3 steps
- EZ Switch: Switch your operation mode only ONE-Touch
- Download Master: 24 hours downloading even PC is shut down
- USB port for FTP/All-in-One Printer sharing



RT-N15

- 802.11n draft 2.0 certified, fully compatible with 802.11b/g
- SuperSpeedN up to 300Mbps data rate, suitable for seamless multimedia stream
- Five Gigabit ports for faster local network data and audio/video files transmission
- EZConfig – WPS and WCN let any user setup secure Wi-Fi network within minutes
- EZQoS (Quality of Service) - Powerful and easily-operated bandwidth management engine streamlines your Gaming/Audio/Video experience
- Auto detection and manual-free setup



RT-N16

- 802.11n certified, fully compatible with 802.11b/g
- Powerful CPU provides a high-performance throughput
- Auto detect your internet connection type and manual free setup
- Support up to 300,000 sessions for extensive P2P clients.
- Most widespread application with USB2.0 port : All-in-1 printer server and FTP files sharing
- Ultra-fast and Convenient Downloads with the Revolutionary Download Master



DSL-N11

- IEEE 802.11 b/g/n and ADSL standard compliant
- Up to 300 Mbps for wireless link and up to 24 Mbps for ADSL 2/2+
- Four 10/100 Mbps Ethernet ports
- Security & Firewall: hacker attack logging, DoS, MAC address filtering and URL blocking
- Auto-detection of Internet connection type and Asus new interface for setup and use



DSL-N13

- IEEE 802.11b/g/n and ADSL standard compliant
- Up to 300 Mbps for wireless link and up to 24 Mbps for ADSL 2/2+
- Four 10/100 Mbps Ethernet ports and 2 USB 2.0 host ports
- Security: NAT, packet filtering, SPI, denial of service, password authentication
- UPnP IGD compliant device

Manufacturer

ASUSTeK Computer Inc.
Tel: +886-2-2894-3447
Address: No. 150, LI-TE RD., PEITOU, TAIPEI 112, TAIWAN

Authorised representative in Europe

ASUS Computer GmbH
Address: HARKORT STR. 21-23, 40880 RATINGEN, GERMANY

Authorised distributors in Turkey

BOGAZICI BIL GISAYAR SAN. VE TIC. A.S.
Tel: +90 212 3311000
Address: AYAZAGA MAH. KEMERBURGAZ CAD. NO.10 AYAZAGA/ ISTANBUL

INDEX BILGISAYAR SISTEMLERI MUHENDISLIK SAN. VE TIC. A.S.
Tel: +90 212 3312121
Address: AYAZAGA MAH. CENDERE YOLU NO.9 AYAZAGA/ISTANBUL

EEE Yönetmeliğine Uygundur.