

ASUS AI Direct Link


ASUS AI Direct Link allows you to form a computer-to-computer network via a network cable to share files with high transfer rate. You must first connect two computers (at least one of them is ASUS product) using a network cable, and then install the utility to both computers to avail the AI Direct Link feature.



- Turn off your firewall software other than Windows Firewall before launching AI Direct Link.
- The transfer rate is limited if you use a 10/100 LAN card.

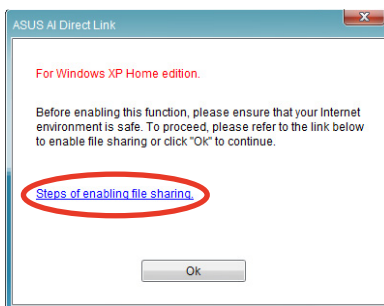
Using AI Direct Link

To enable the incoming folder:

1. From the Windows® taskbar, right click on the AI Direct Link icon  and select **Incoming folder > Enable incoming folder**.



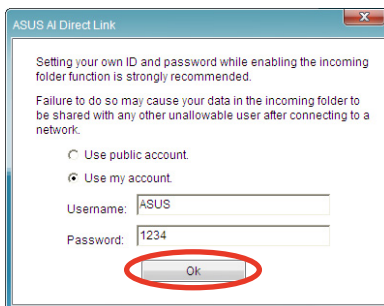
For Windows XP Home edition users, click **Steps of enabling file sharing** on this pop-up message and follow the instructions to enable the incoming folder.



2. If you want to verify the incoming user, select **Use my account** and set your username and password. Otherwise, select **Use public account**.



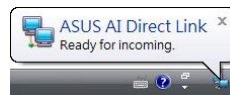
For security's sake, it is recommended that you set a username and password.



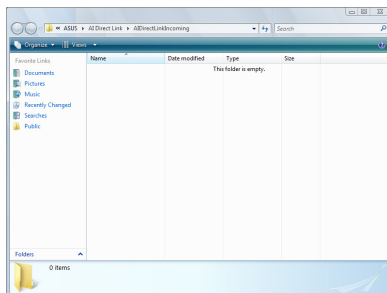
3. Click **OK** and the "Ready for incoming" message appears.



To disable the incoming folder, select **Incoming folder > Disable incoming folder**.



4. Right click on the AI Direct Link icon and select **Incoming folder > Open incoming folder**. The **AIDirectLinkIncoming** folder opens. Put the files you want to share into this folder. The authorized user has full access to this folder.



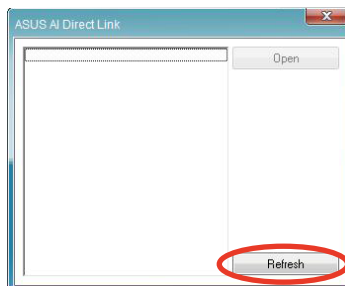
The default path of the AIDirectLinkIncoming folder is C:\Program Files\ASUS\AI Direct Link. To change its location, disable the incoming folder first. Then, select **Incoming folder > Change incoming folder** to open the system directories, and move the AIDirectLinkIncoming folder under another directory.

To connect to another computer:



This function is valid for ASUS products only.

1. From the Windows® taskbar, right click on the AI Direct Link icon and select **Connect**. The following screen displays.
2. Click **Refresh**. The software starts searching for the connected computer.



3. The name of the computer found is listed. Click **Open** to open its shared folder.
4. If necessary, enter the authorized username and password. Click **OK** to log in and have full access to this shared folder.

