

ASUS USB 3.0 Boost

The ASUS exclusive USB 3.0 Boost provides speed boost for USB devices plugged into onboard USB 3.0 ports and the up-to-date support of USB Attached SCSI Protocol (UASP). With USB 3.0 Boost, you can accelerate the transfer speed of your USB 3.0 devices with ease. Follow the instruction below to use ASUS USB 3.0 Boost.

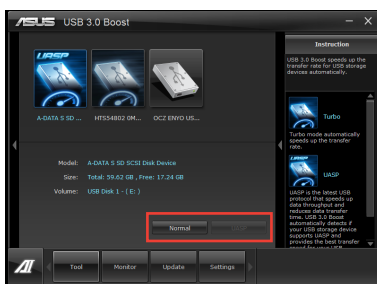


- ASUS USB 3.0 Boost is exclusively for ASUS motherboards only. DO NOT use it on motherboards of other manufacturers.
- Refer to www.asus.com for the latest lists of USB 3.0 Boost-supported ASUS motherboards and UASP-supported USB 3.0 devices.

- Download USB 3.0 Boost from ASUS official website at http://event.asus.com/mb/2010/The_Best_USB3_Experience/The_UASP_For_USB3.0.htm and click **Setup.exe** to install it to your system.
- Launch USB 3.0 Boost by clicking **Tool** > **USB 3.0 Boost** on the AI Suite II main menu bar.
- If no USB device is connected, a **USB device is not found** message appears.



- Connect a USB device to the USB 3.0 port. USB 3.0 Boost automatically detects the property of the connected device and switches to **Turbo** mode or **UASP** mode (if UASP is supported by the connected device).
- You can manually switch the USB 3.0 mode from **UASP** mode or **Turbo** mode back to **Normal** mode at any time.



Introduction on USB 3.0 Boost Modes

Normal	"Normal mode" operates the transfer rate as its original speed.
Turbo	"Turbo mode" could automatically speed up the transfer performance.
UASP	UASP is the latest USB protocol that speeds up data throughput, reduce user waiting time. With ASUS USB 3.0 Boost, it will automatically detect whether your device supports UASP or not, and provide the best transfer speed for your USB devices.



- You can remove the connected USB device at any time with **Safely Remove Hardware** in the Windows notification area no matter the device is set to Normal, Turbo or UASP mode.
- USB 3.0 Boost applies to the onboard USB 3.0 ports only.
- Some devices' bundled applications may be device dependent. If the applications provided by the external storage devices do not work properly under UASP/Turbo mode, switch USB 3.0 Boost back to Normal mode.
- The UASP function is supported only on motherboards with ASMedia USB 3.0 controllers, and the driver version should be **v1.14.1.0** or later.

Compatible Models

INTEL			
Z68	Maximus IV GENE-Z/GEN3	P8Z68-V PRO/GEN3	P8Z68-V/GEN3
	P8Z68-V PRO	P8Z68-V	P8Z68-V LE
	P8Z68-V LX	P8Z68-M PRO	

AMD			
990FX	SABERTOOTH 990FX		
990X	M5A99X EVO		
970	M5A97 EVO	M5A97 PRO	M5A97
A75	F1A75-V EVO	F1A75-V PRO	F1A75-V*
	F1A75*	F1A75-M PRO	F1A75-M PRO/CSM
	F1A75-M*	F1A75-M LE*	

* These models supports ASUS USB 3.0 Boost Turbo mode.

ASUS USB 3.0 Boost—UASP Mode Support Devices and Controllers			
UASP Device	CyberCLIM S1-U3 TURBO	CyberCLIM S1-DS3 TURBO	CyberCLIM S2-U3 TURBO
UASP Controller*	ASMedia ASM1051E	ASMedia ASM1051U	ASMedia ASM1054
	LucidPORT USB300-REV2		

* Devices using these controllers run at UASP mode under ASUUS USB 3.0 Boost