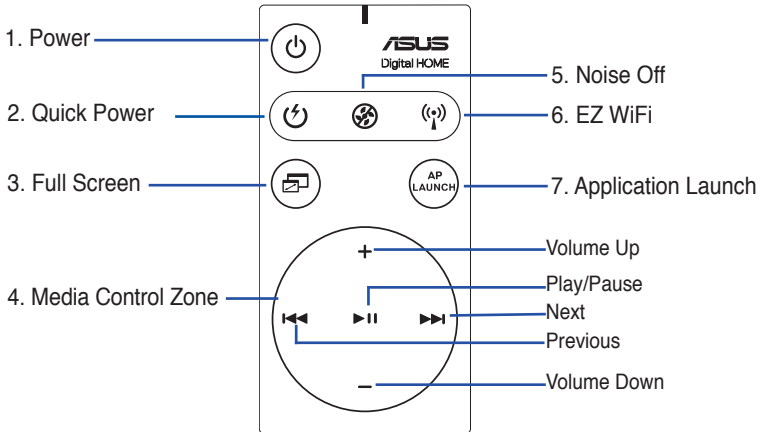


1

Welcome

Tired of sticking to your PC and busy with your keyboard and mouse? With the ASUS DH Remote, you can play, pause, or adjust the volume on any songs desired without leaving your sofa. Have DH Remote in your hand and do more with your PC at a distance away!

Overview of the ASUS DH Remote



1. Power: Turns the computer on/off
2. Quick Power: Puts the computer quickly into sleep mode which is S3
3. Full Screen: Puts the media application into full screen
4. Media Control Zone: Controls the media application
5. Noise Off: Reduces the noise coming from the computer
6. EZ WiFi: Puts the computer quickly into sleep mode but allowing WiFi-AP Solo™ to still operate
7. Application Launch: Launches the media application



- To use Quick Power, save your data first.
- The Noise Off mode is suitable only for light-loading computer operations like word processing and web page browsing, and it will intelligently adjust the fan speed according to the system loading.
- Different system equipments (the number of VGA, PSU, chassis fan) will act on the effect of Noise Off.
- *When using a fan speed controllable VGA card or a fanless VGA card, remember to connect the power fan and chassis fan cable to the fan connector on the motherboard to get a better Noise Off effect.

*Not all power supply units have fan connectors, refer to the the motherboard manual for details.



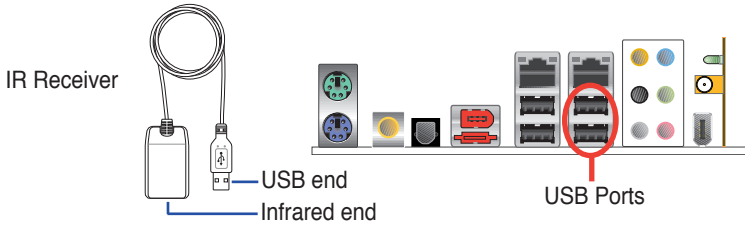
EZ-WiFi mode is suitable especially when you are away from the PC and still want to download data or use devices like wireless applications and Skype phone. Re-press the EZ-WiFi function button to disable the EZ-WiFi function.

2

Infrared Receiver Installation

USB IR Receiver

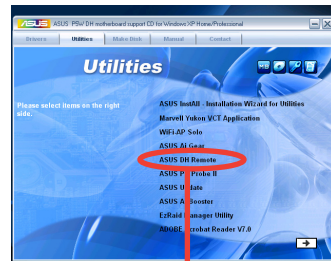
Your motherboard will come bundled with a IR Receiver, simply connect the USB end to your PC USB ports under the LAN2 port and place the IR receiver end at a suitable place without hindrance.



- The valid IR function distance is 6m depending on the environment. Suggest you to aim at the IR receiver when using the ASUS DH Remote to ensure a smooth and successful operation.
- These two USB ports support USB wake-up capability. So when the computer is not turned on, removing USB devices such as the ASUS IR receiver from these two ports will start up the PC.
- Back I/O differs depending on the motherboards.
- Supports operating system: Windows XP, 2003 server, XP (64-bit), and 2003 server (64-bit).

Software Installation

Before enjoying the convenience the ASUS DH Remote brings you, you need to install the software after the infrared receiver installation. Simply click and install the file **ASUS DH Remote** from Utilities menu of the Motherboard Support CD package for the first time, and it will launch automatically everytime you start up your PC.



ASUS DH Remote

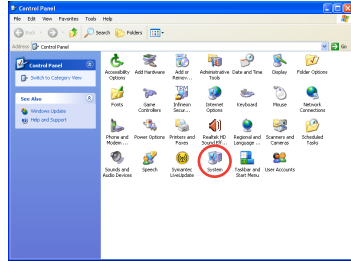
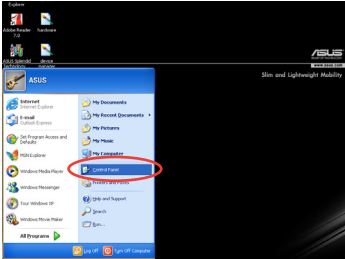


The **Utilities** screen differs depending on the motherboard.

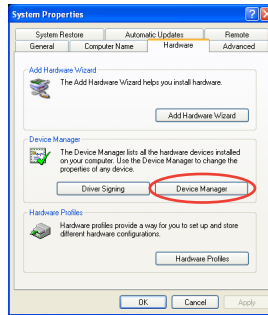
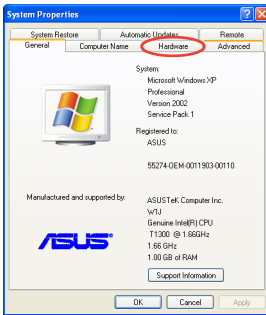
3

Activating HID-Compliant Devices

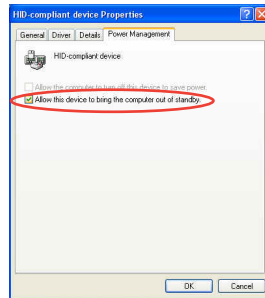
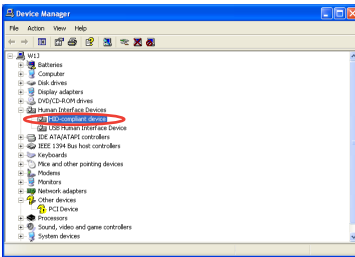
Due to the limitation of the operating system, if you remove the IR receiver from the previous port and have it reinstall into the other USB port, the IR receiver will not function. To activate the HID-compliant devices again, go to **Device Manager/Power Manager** and check the box of **Allow this device to bring the computer out of standby**.



1. Click **Start** and choose **Control Panel**.
2. Double click **System**.



3. Click **Hardware**.
4. Click **Device Manager**.

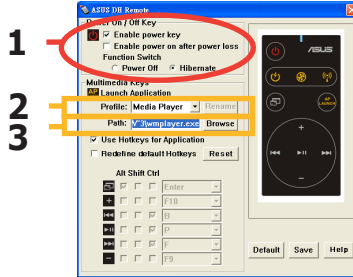


5. Select **HID-compliant devices**.
6. Check the box of **Allow this device to bring the computer out of standby**.

4

ASUS DH Remote Settings

After the installation of the ASUS DH Remote software, the utility screen will show up and allows you to configure the ASUS DH Remote settings. Set up the function keys step by step.



1. Power On / Off Key

Setting this item to **Hibernate** allows you to lead your PC to the Windows S4 mode, which enables your PC to enter Hibernate faster and return to full power much more quickly.



- You have to check the box of **Enable Power Key** before using the ASUS DH Remote to turn on and off your PC or to have it hibernate. Visit www.microsoft.com for details about Hibernate.
- Power On/Off button does not support MS-DOS Mode.
- Check the box of **Enable power on after power loss Function Switch**. Whenever the power cord of your PC is removed from the outlet or there is a power failure, your PC will auto-boot and shut down around few seconds to enable Power On Function of DH Remote after the power supply is back.

Multimedia Keys

2. Profile

There are nine default applications in the **Profile** drop-down menu and five sets of **User Define**.



Default applications are Media Player, iTunes, PowerDVD, WinDVD, QuickTime, Real Player, DivX Player, WinAmp and Power Point. (Default applications in the ASUS DH Remote software may change without notice.)

3. Path

The software will help locate the executable (.exe) file of the nine default applications. If the .exe file is not located, click **Browse** to direct the correct path. The .exe files of the **User Define** applications need to be located manually before you using the ASUS DH Remote.

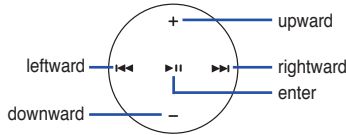


- Save after the .exe file path is directed.
- If the executable file is relocated or the application is re-installed, you have to redirect the file path for a correct ASUS DH Remote operation.


5

AP Launch Button and AP Launch Menu

Navigate with the media control zone.



Select Application Profile

After you press  on the remote control, an application profile will be displayed on the screen. Use the remote control to navigate and initiate a desired application.



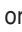


Select Application Path

If the software fails to locate the executable file of the application at the first-time use, the **Select Application Path** screen will appear. Specify the correct path on screen.




Select File

After selecting the correct path, you should select the correct executable file (.exe) of the application for launching the application.

If the executable file is located by the software successfully or you have already set up correctly in advance, this screen will show up directly when the application is chosen. After selecting a desired file, folder or CD ROM, use /  to choose **Back/OK/Cancel** and then press  to confirm.



- For music listening, making playlists beforehand is suggested.
- Press  again to close the application and again to re-launch the profile menu.

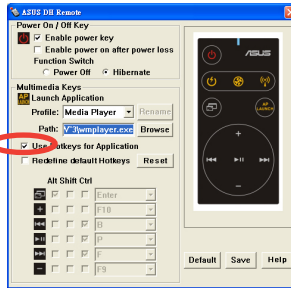
6

Define Hotkeys for Application

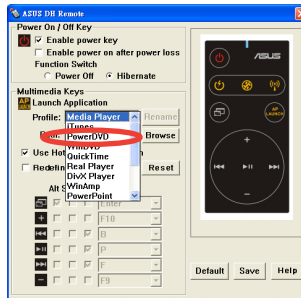
If you want to use the Media Control Zone to control non-default applications, such as ACDSee, you can select **User Define** from the drop-down menu and rename it by pressing **Rename**. The ASUS DH Remote software has correctly set up nine popular applications and defined the function buttons for your convenient operation.

User Define

After clicking the box of **Use Hotkeys for Application**, you are free to define the hotkeys of the User Define applications.




Select **User Define 1~5** from the **Profile** drop-down menu for hotkeys definition. Press **Save** to save the new setup or press the **Default** button to clear ALL personalized setups and restore to the original definitions.



- The remote control buttons will function only when the definitions of the application hotkeys are correct.
- The hotkey definitions may vary with different software versions. Click the box of **Redefine default hotkeys** to give new correct definitions if needed. Press **Save** button to save the redefinitions or press **Reset** button to restore to the default hotkeys definition.



After the initial setup, you will find an ASUS DH Remote icon  on the Windows OS taskbar. Click the icon and select **Settings** to launch the utility screen.

7

Appendix

The Function Buttons and AP Profile

The ASUS DH Remote software helps you set up the correspondence between the function buttons on the remote to the function hotkeys of nine popular applications in advance and leaves five sets for **User Define**.

	Media Player	iTunes	PowerDVD	WinDVD	QuickTime
Full Screen	v	v	v	v	v
Play/Pause	v	v	v/x	v	v
Vol+	v	v	v	v	v
Vol-	v	v	v	v	v
Ch+	v	v	v	v	x
Ch-	v	v	v	v	x
*NOTE			only play, no pause		

	Real Player	DivX Player	WinAmp	Power Point	User Define
Full Screen	v	v	x	v	
Play/Pause	v	v	v/x	Full Screen	
Vol+	v	x	v	B	
Vol-	v	x	v	ESC	
Ch+	v	x	v	Page Down	
Ch-	v	x	v	Page Up	
*NOTE			only play, no pause		



If you find the 9 default applications insufficient and would like to add different applications, you are able to rename the 5 sets **User Define** and create your preferred applications and favorable setups.