

KCMA-D8

How to identify if MB supports Opteron 4200 CPU

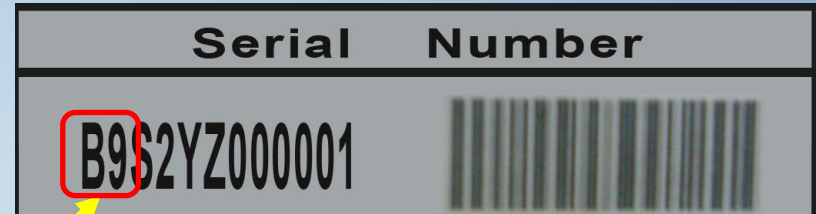
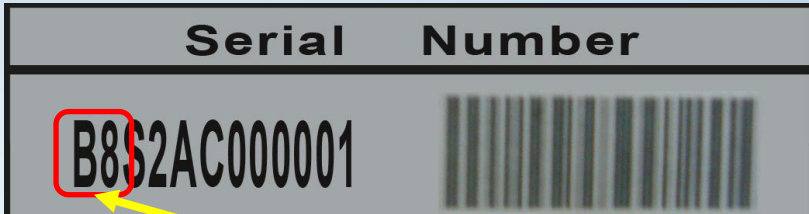
By ASUS Server BU
Nov 11, 2011

How to identify if MB supports Opteron 4200 CPU

Serial Number(SN) in Outer Carton

Support Opteron 4100 series CPU*

Support Opteron 4200 series CPU



- MB shipped after September 2011, Serial Number(SN) : **B9S2xxxxxxx** or above (B means year, B=2011, C=2012...; 9 means month, 1...9, A, B, C), support Opteron 4200 CPU. (see P.5 for BIOS version and upgrade SOP)

* Not support Opteron 4200 series CPU

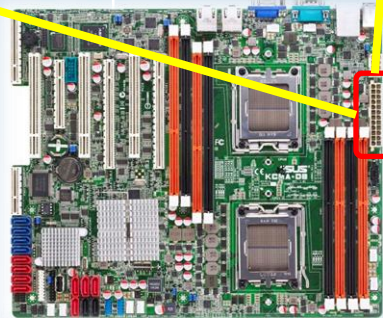
How to identify if MB supports Opteron 4200 CPU

Serial Number label location

Support Opteron 4100 series CPU*



Support Opteron 4200 series CPU



- MB shipped after September 2011, Serial Number(SN) : **B9S2xxxxxxxx** or above (B means year, B=2011, C=2012...; 9 means month, 1...9, A, B, C), support Opteron 4200 CPU. (see P.5 for BIOS version and upgrade SOP)

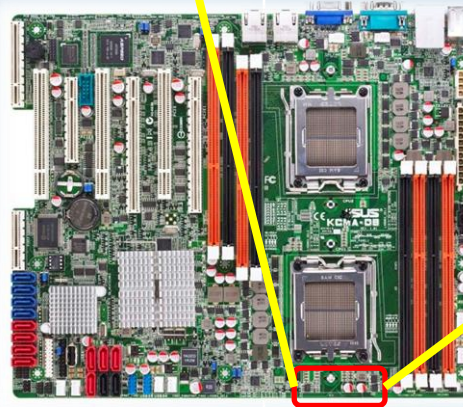
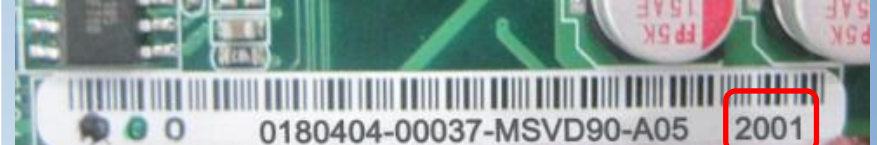
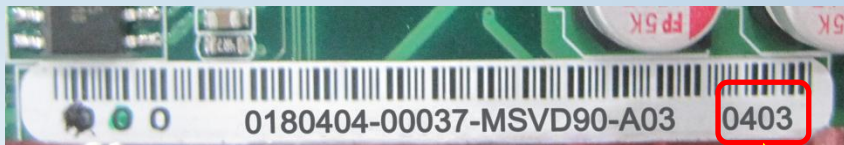
* Not support Opteron 4200 series CPU

How to identify if MB supports Opteron 4200 CPU

BIOS version

Support Opteron 4100 series CPU*

Support Opteron 4200 series CPU



BIOS must use **2001 or later version**

* Please follow the BIOS upgrade SOP in next page

* Not support Opteron 4200 series CPU

BIOS Upgrade SOP



If your KCMA-D8 MB's Serial Number starts with **B9S2xxxxxxxx**, but it loaded with **BIOS 0403** (or former)

* BIOS version **2001** or later DOES NOT need to flash the BIOS to support Opteron 4200

⇒ **Please follow below BIOS upgrade SOP to support Opteron 4200 series CPU**



Items MUST prepare :

- AMD Opteron 4100 series CPU (at least 1 piece)
- **BIOS version 2001** (or later)
http://www.asus.com/Server_Workstation/Server_Motherboards/KCMAD8/#download
- DOS-bootable USB flash drive

SOP :

1. Make sure the USB flash drive loaded with **BUPDATER** and **BIOS 2001**
2. Plug in **Opteron 4100 series CPU** in KCMA-D8 **CPU socket 1**
3. Power on the system and boot to DOS environment
4. type: **BUPDATER /iKCMA-D8-ASUS-2001.ROM**
5. When BUPDATER complete the flash process, please shut down the system
6. Change CPU to Opteron 4200 series, system will boot successfully

