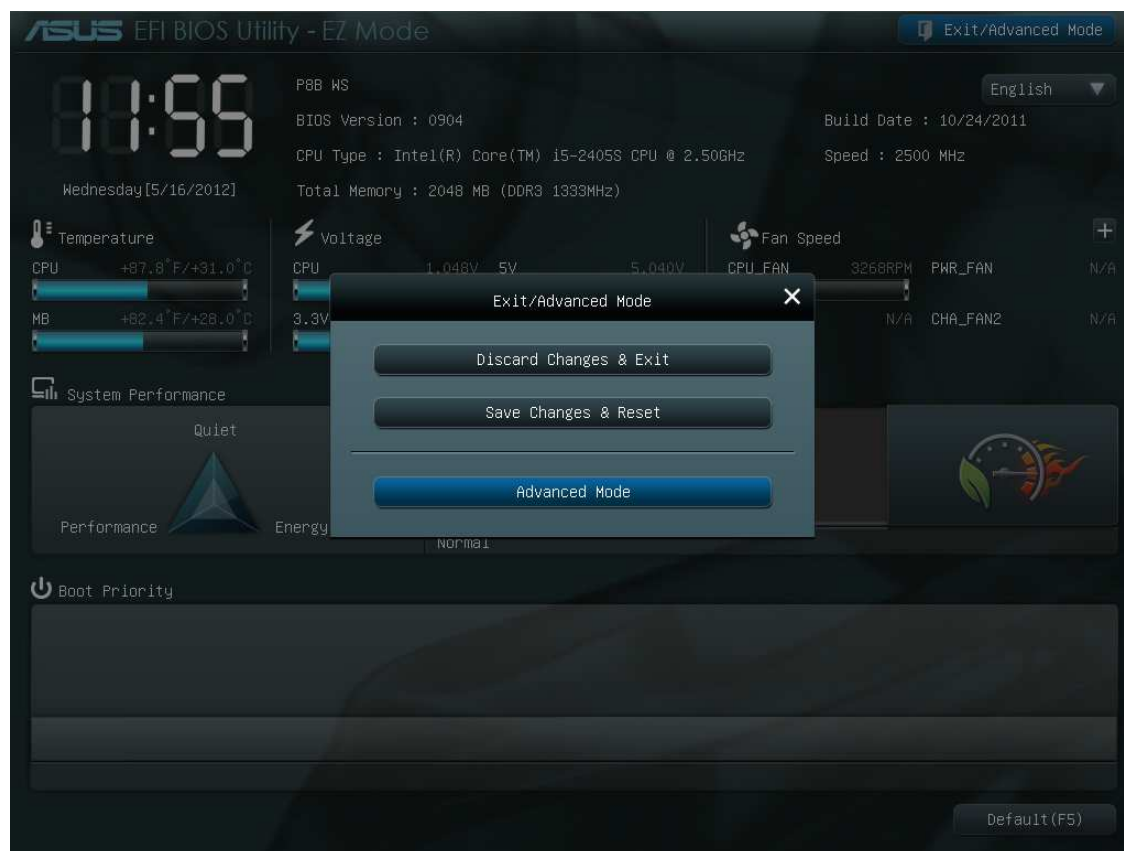


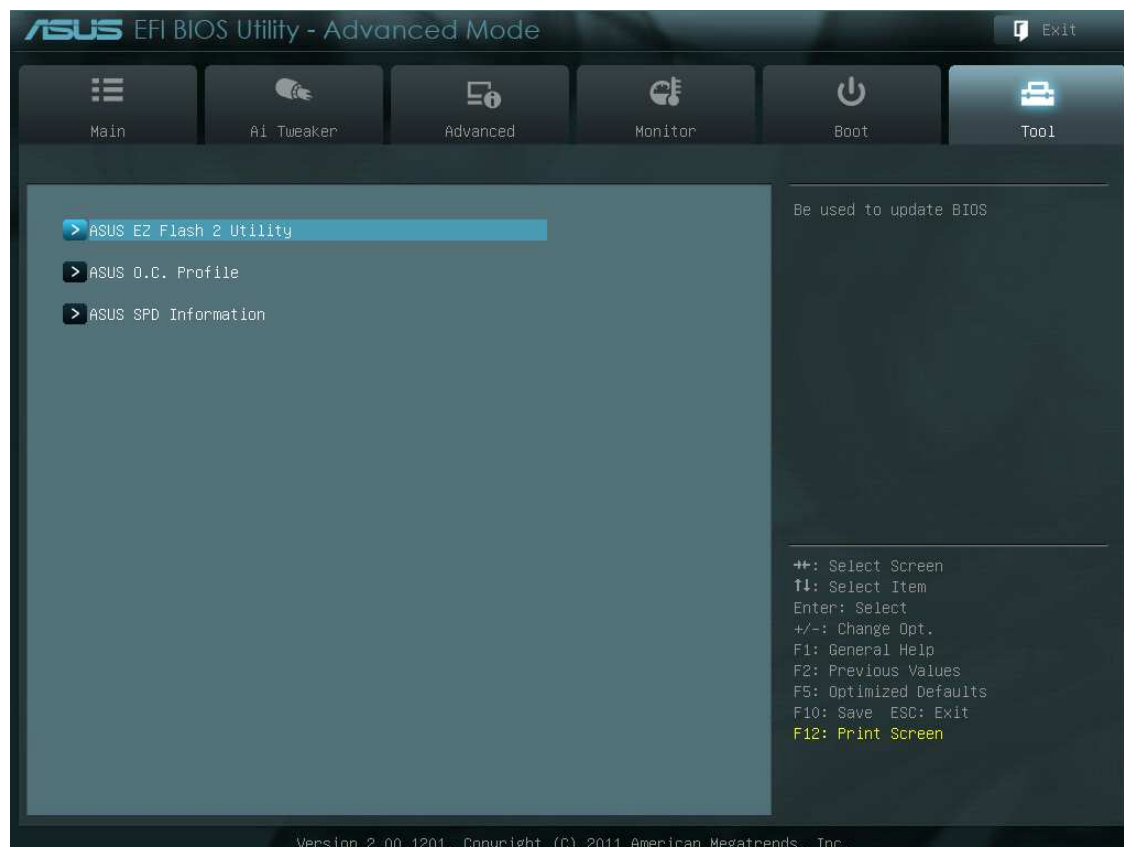
P8B WS update BIOS from 0904(or below) to 2009(or above) for support Ivy Bridge CPU, the BIOS update SOP are as following:

➤ Use EZ Flash 2:

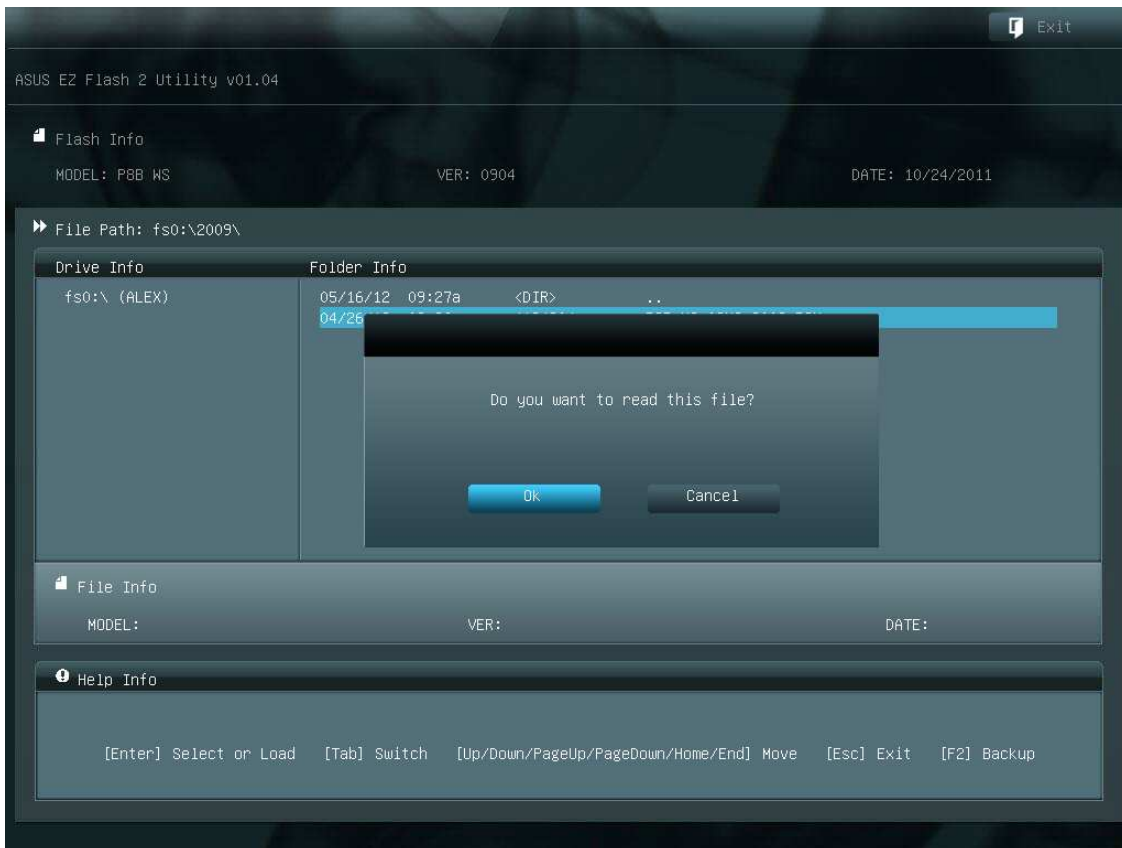
Step 1: Enter BIOS → Press “Esc” → Select “Advanced Mode”



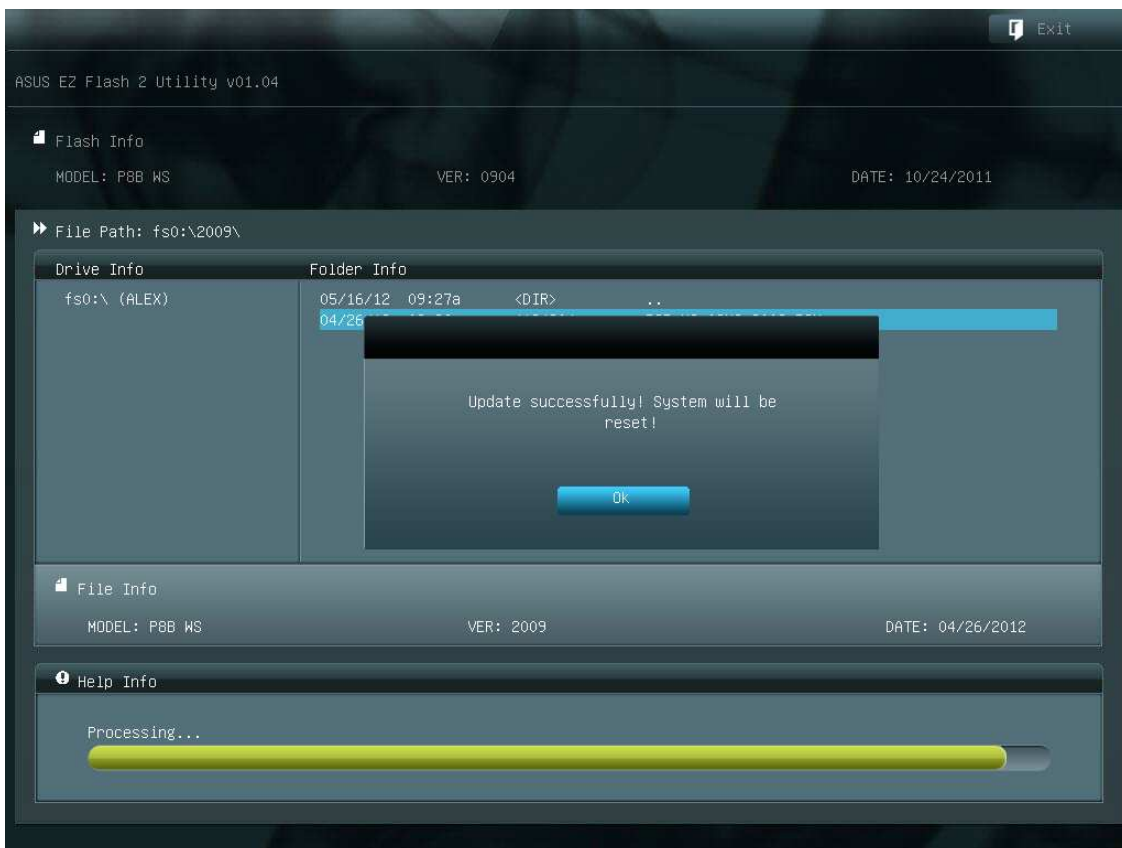
Step 2: Select “Tool” → Select “ASUS EZ Flash 2 Utility”



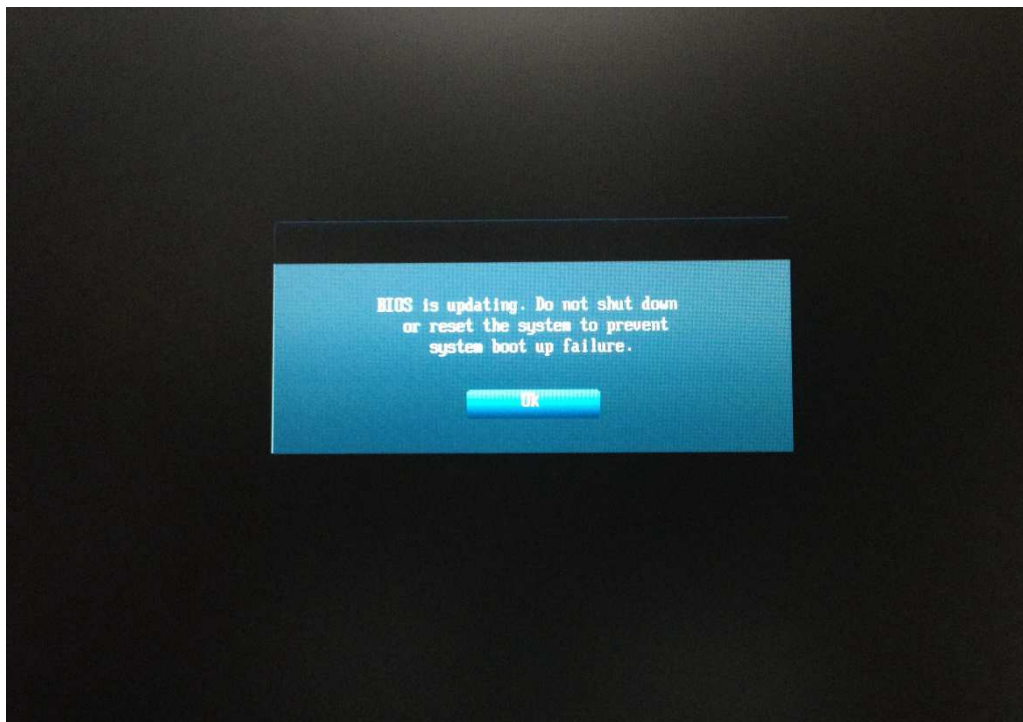
Step 3: Select the 2009 BIOS ROM file (“P8B-WS-ASUS-2009.ROM”) from your flash disk→ Press “OK” to read file.



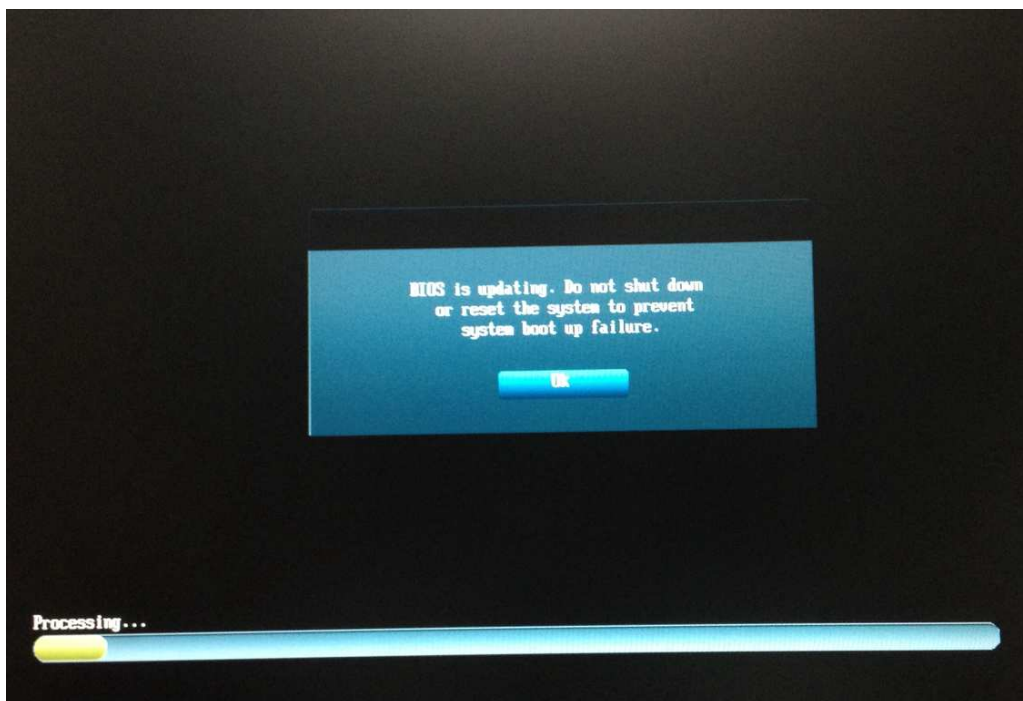
Step 4: Updated BIOS successfully → Press “OK” to reset system.



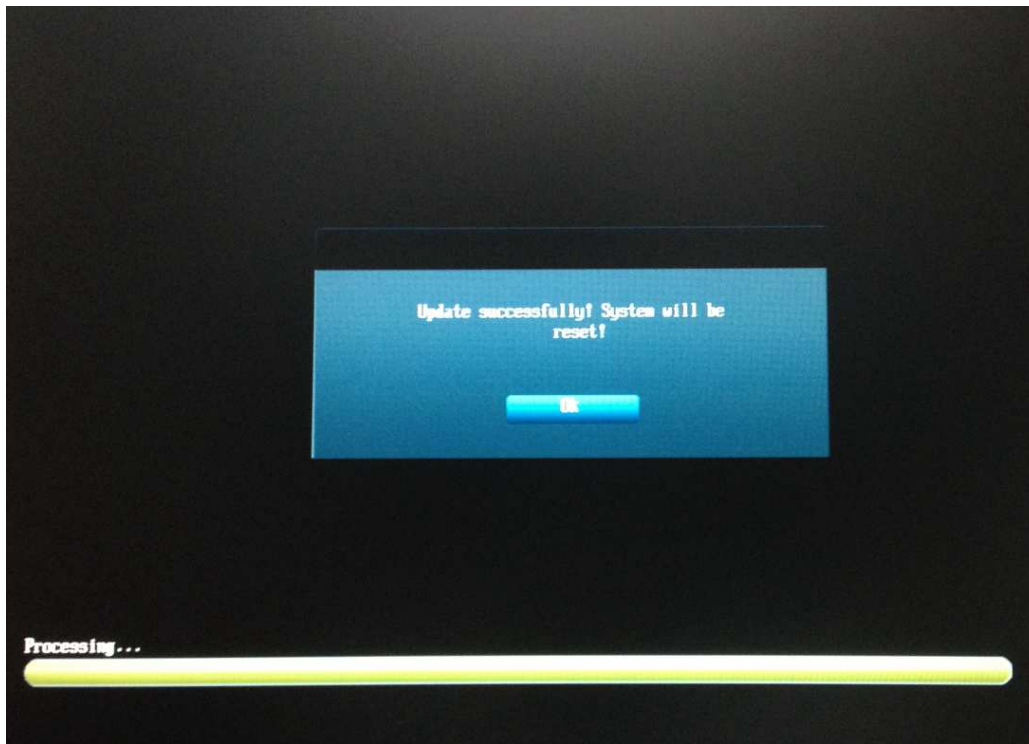
Step 5: Press "OK"



Step 6: Updating BIOS.



Step 7: BIOS update successfully, press “OK” to reset system again.



Step 8: Enter BIOS (Advanced Mode) and confirm ME version show 8.0.2.1410.



➤ Use Bupdater utility:

Step 1: Use bootable flash disk to enter DOS → use “bupdater /iP8B-WS~1.rom” command to update 2009 BIOS. (Please download bupdater.exe and P8B WS 2009 ROM files from ASUS official website)

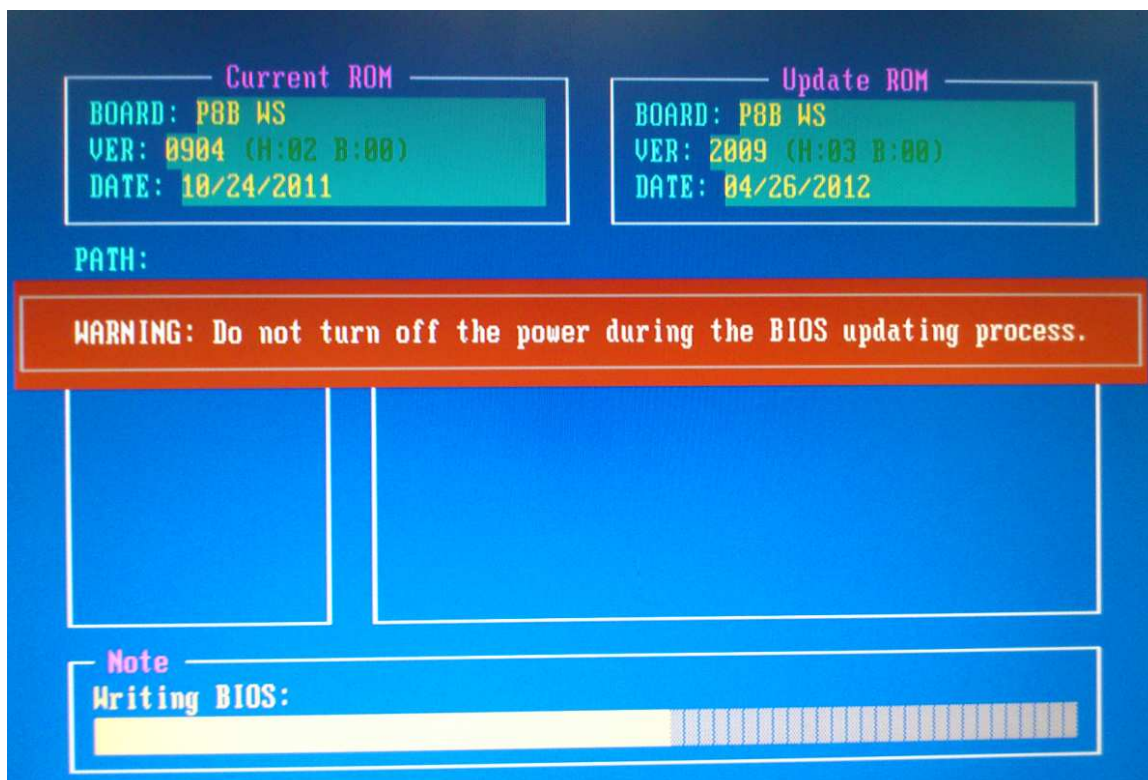
```
C:\BUPDATER>DIR

Volume in drive C is ALEX
Volume Serial Number is A22C-B0B9
Directory of C:\BUPDATER

.                <DIR>                05-16-12   9:43a
..               <DIR>                05-16-12   9:43a
BUPDATER EXE      69,060   12-23-11   4:56a
BUPDATER TXT       257   03-20-12  11:55p
P8B-WS~1 ROM    4,194,304   04-26-12   2:26p
      3 file(s)      4,263,621 bytes
      2 dir(s)      12,284.52 MB free

C:\BUPDATER>bupdater /iP8B-WS~1.ROM
```

Step 2: Updating BIOS.



Step 3: Restart system.

```
The BIOS update is finished. Please restart your system.  
C:\BUPDATER>_
```

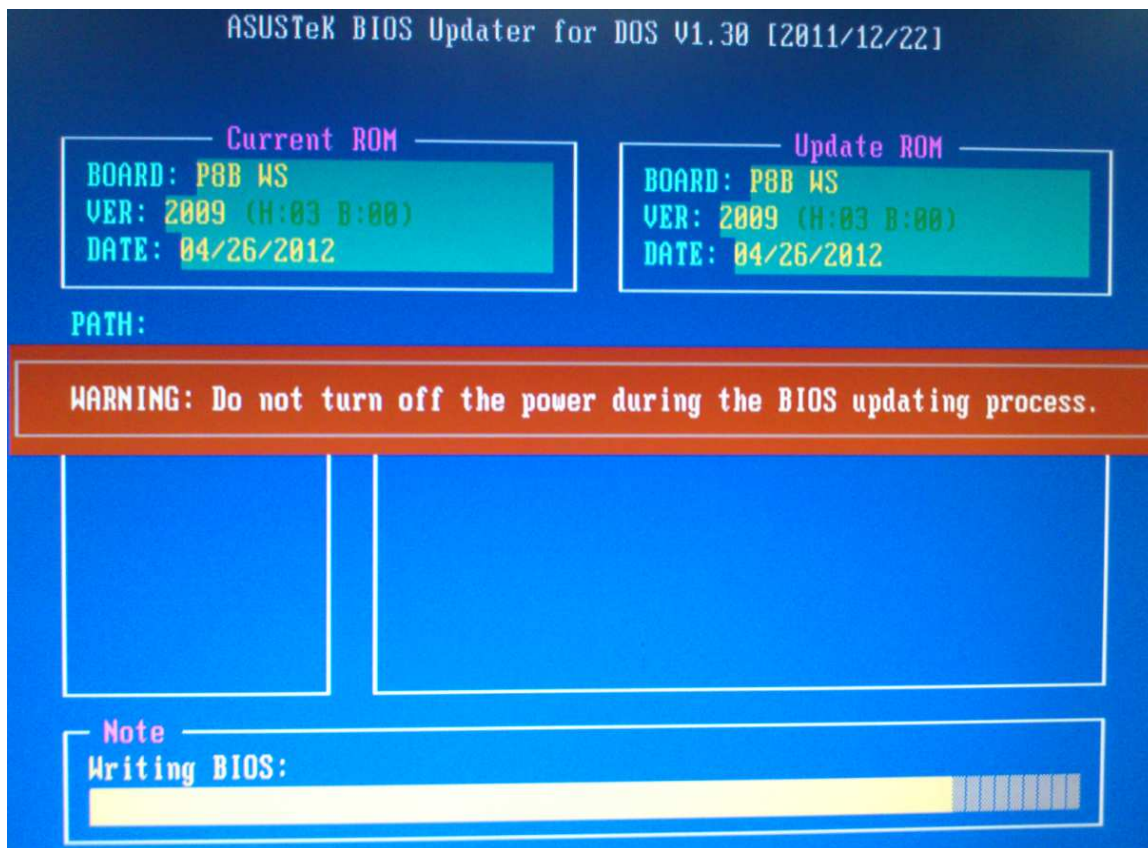
Step 4: Press "F1" to enter DOS.

```
MBIOS (C) 2010 American Megatrends, Inc.  
  
SUS P8B WS ACPI BIOS Revision 2009  
PU: Intel(R) Core(TM) i5-2405S CPU @ 2.50GHz  
Speed: 2500MHz  
  
otal Memory: 2048MB (DDR3-20523672)  
  
USB Devices total: 1 Drive, 0 Keyboard, 1 Mouse, 2 Hubs  
USB Drive #0: ADATA USB Flash Drive 1.00  
  
IMPORTANT: Update the same BIOS version again to complete BIOS update and to boot up successfully.  
When updating BIOS using "ASUS Update" in the OS, close all applications before continuing.  
Press F1 to Continue
```

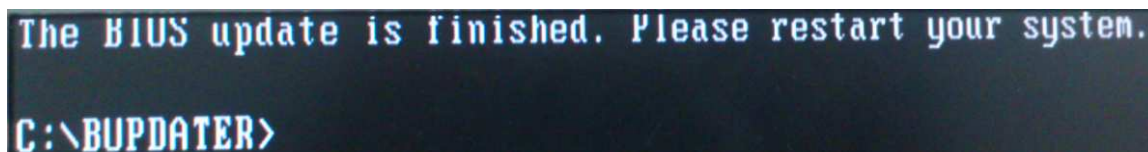
Step 5: Use "bupdater /iP8B-WS~1.rom" command to update 2009 BIOS again.

```
Volume in drive C is ALEX  
Volume Serial Number is A22C-B0B9  
Directory of C:\BUPDATER  
  
.  
..  
BUPDATER EXE          69,060  12-23-11  4:56a  
BUPDATER TXT           257  03-20-12  11:55p  
P8B-WS~1 ROM      4,194,304  04-26-12  2:26p  
3 file(s)           4,263,621 bytes  
2 dir(s)           12,284.52 MB free  
  
C:\BUPDATER>bupdater /iP8B-WS~1.ROM_
```


Step 6: Updating BIOS.



Step 7: Restart system.



Step 8: Enter BIOS (Advanced Mode) and confirm ME version show 8.0.2.1410.

