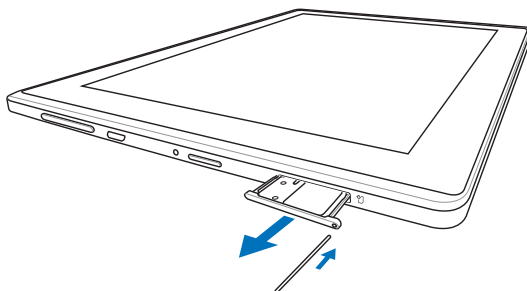


ASUS Transformer Pad QSG

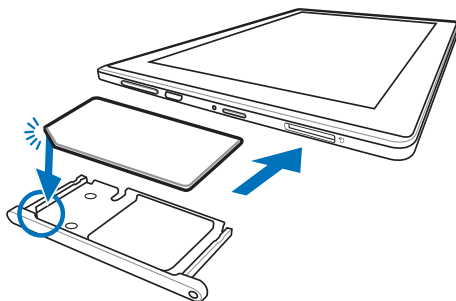
TF300TG 3G Connection Manager

Installing SIM card

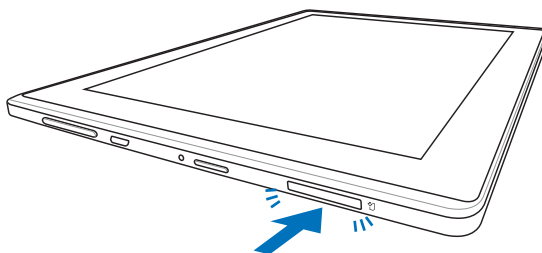
1. Use a straightened paper clip to press the SIM card tray eject button.




2. Remove the tray from the slot. Orient and place the SIM card on the tray.



3. Firmly push the SIM card tray back to the slot.





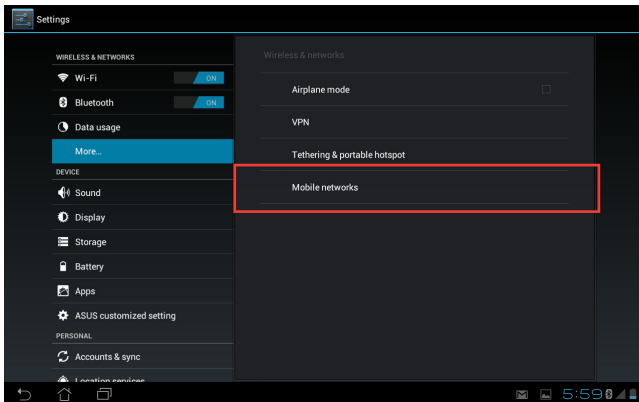
 The 3G antenna is placed on the top side of your ASUS Transformer Pad.

Configuring APN settings

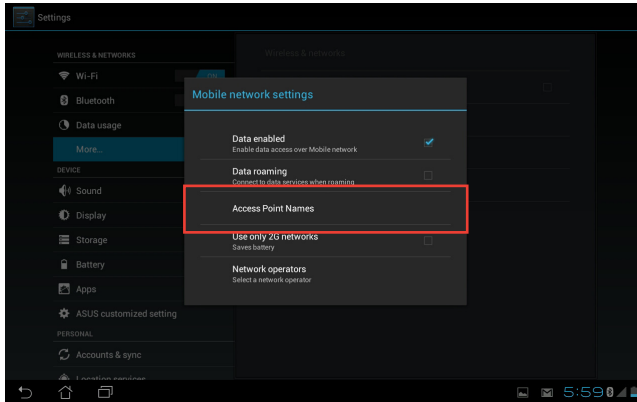
Your ASUS Transformer Pad automatically detects and connects to the 3G network once you install the SIM card. If not, follow the instructions to manually configure the Access Point Name (APN) settings on your ASUS Transformer Pad.

To configure APN settings

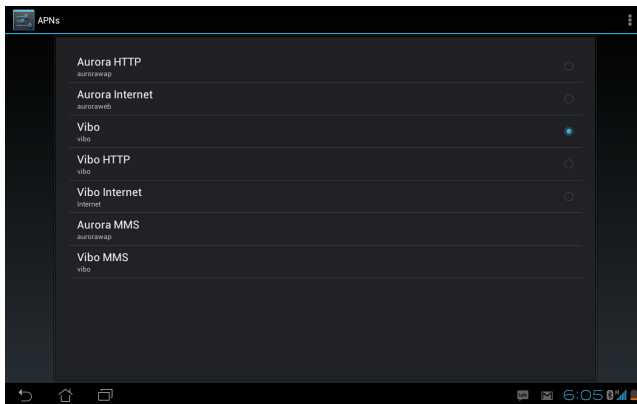
1. Tap the **Apps** menu on the top right corner of the Home Screen and tap **Settings**.
2. Tap **More...** under **Wireless & networks** on the left panel and tap **Mobile networks**.



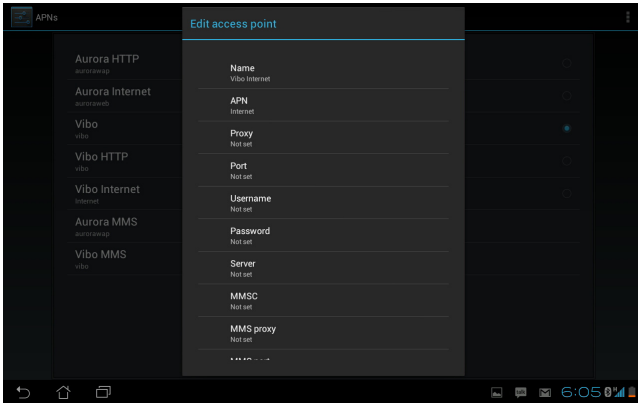
3. Tap **Access Point Names**.



4. Tap the service or network you would like to connect to.



5. Call your mobile service provider, ask for the APN related information and fill in all the fields needed. Scroll down for more fields.



Fill in suggested fields **APN**, **MMSC**, **MMS proxy**, **MCC**, and **MNC**. The required fields for APN may vary with your 3G network service provider.



Your ASUS Transformer Pad connects to the Internet through the wireless access point when WiFi and 3G networks are both available. Disable WiFi function to access 3G networks.

Appendix

CE RF Exposure Requirements

ASUS Transformer Pad TF300TG

Max. SAR Measurement (10g)

GSM 900: 1.49 W/kg

GSM 1800: 1.26 W/kg

WCDMA Band V: 0.73 W/kg

WCDMA Band VIII: 1.17 W/kg

WCDMA Band I : 1.29 W/kg

WLAN 2.4G: 0.49 W/kg

This Tablet PC was tested at a distance of 0.5cm from the body, with the device transmitting at its highest certified power level in all tested frequency bands. To comply with CE RF exposure requirements, a minimum of 0.5cm separation between the Tablet PC and the user shall be maintained.

This equipment may be operated in:							
AT	BE	BG	CH	CY	CZ	DE	DK
EE	ES	FI	FR	GB	GR	HU	IE
IT	IS	LI	LT	LU	LV	MT	NL
NO	PL	PT	RO	SE	SI	SK	TR

- **Products with 2.4–GHz Wireless LAN Devices France**

L'utilisation de cet équipement (2.4GHz wireless LAN) est soumise à certaines restrictions: cet équipement peut être utilisé à l'intérieur d'un bâtiment en utilisant toutes les fréquences de 2400 à 2483.5MHz (Chaîne 1–13). Pour une utilisation en environnement extérieur, les fréquences comprises entre 2400-2454 MHz (Chaîne 1-9) peuvent être utilisées. Pour les dernières restrictions, voir <http://www.art-telecom.fr>.

For 2.4–GHz wireless LAN operation of this product, certain restrictions apply. This equipment may use the entire–2400–MHz to 2483.5–MHz frequency band (channels 1 through 13) for indoor applications. For outdoor use, only 2400-2454 MHz frequency band (channels 1-9) may be used. For the latest requirements, see <http://www.art-telecom.fr>.

- **Wireless LAN Module's Maximum EIRP**

Frequency Ranges (MHz)	Indoors	Outdoors
2400 MHz ~ 2446.5 MHz	10mW	Not Permitted
2446.5 MHz ~ 2483.5 MHz	100mW	100mW on private property with Ministry of Defense approval.

- Users only use the charge with Adaptor, you can not use the connection to USB interfaces with USB 2.0 version or higher.
- Please make sure the temperature for adapter will not be higher than 40 °C
- Please make sure the temperature for device will not be higher than 40 °C
- The device could be used with a separation distance of 0cm to the human body.
- The adaptor shall be installed near the equipment and shall be easily accessible.

EC Declaration of Conformity



We, the undersigned,

Manufacturer:	ASUSTek COMPUTER INC.
Address, City:	No. 150, LI-TE RD., PEITOU, TAIPEI 112, TAIWAN R.O.C.
Country:	TAIWAN
Authorized representative in Europe:	ASUS COMPUTER GmbH
Address, City:	HARKORT STR. 21-23, 40880 RATINGEN
Country:	GERMANY

declare the following apparatus:

Product name :	ASUS Transformer Pad
Model name :	TF300TG

conform with the essential requirements of the following directives:

2004/108/EC-EMC Directive

<input checked="" type="checkbox"/> EN 55022:2006+A1:2007	<input checked="" type="checkbox"/> EN 55024:1998+A1:2001+A2:2003
<input checked="" type="checkbox"/> EN 61000-3-2:2006+A1:2009+A2:2010	<input checked="" type="checkbox"/> EN 61000-3-3:2008
<input type="checkbox"/> EN 55013:2001+A1:2003+A2:2006	<input type="checkbox"/> EN 55020:2007

1999/5/EC-R & TTE Directive

<input checked="" type="checkbox"/> EN 300 328 V1.7.1(2006-10)	<input checked="" type="checkbox"/> EN 301 489-1 V1.8.1(2008-04)
<input checked="" type="checkbox"/> EN 300 440-1 V1.6.1(2010-08)	<input checked="" type="checkbox"/> EN 301 489-3 V1.4.1(2002-08)
<input checked="" type="checkbox"/> EN 300 440-2 V1.4.1(2010-08)	<input type="checkbox"/> EN 301 489-4 V1.3.1(2002-08)
<input checked="" type="checkbox"/> EN 301 511 V9.0.2(2003-03)	<input checked="" type="checkbox"/> EN 301 489-7 V1.3.1(2005-11)
<input checked="" type="checkbox"/> EN 301 908-1 V4.2.1(2010-03)	<input type="checkbox"/> EN 301 489-9 V1.4.1(2007-11)
<input checked="" type="checkbox"/> EN 301 908-2 V3.2.1(2007-05)	<input checked="" type="checkbox"/> EN 301 489-17 V2.1.1(2009-05)
<input type="checkbox"/> EN 301 893 V1.4.1(2005-03)	<input checked="" type="checkbox"/> EN 301 489-24 V1.4.1(2007-09)
<input type="checkbox"/> EN 302 544-2 V1.1.1(2009-01)	<input type="checkbox"/> EN 302 326-2 V1.2.2(2007-06)
<input type="checkbox"/> EN 50360:2001	<input checked="" type="checkbox"/> EN 62311:2008
<input checked="" type="checkbox"/> EN 50332-1:2000	<input checked="" type="checkbox"/> EN 62209-2:2010
<input checked="" type="checkbox"/> EN 50332-2:2003	<input checked="" type="checkbox"/> EN 62479-2:2010

2006/95/EC-LVD Directive

<input checked="" type="checkbox"/> EN 60950-1 / A11:2009	<input type="checkbox"/> EN 60065:2002+A1:2006+A11:2008
<input type="checkbox"/> EN 60950-1 / A12:2011	<input type="checkbox"/> EN 60065:2002 / A12:2011

2009/125/EC-ErP Directive

Regulation (EC) No. 1275/2008	Regulation (EC) No. 278/2009
<input checked="" type="checkbox"/> EN 62301:2005	<input checked="" type="checkbox"/> EN 62301:2005
Regulation (EC) No. 642/2009	
<input type="checkbox"/> EN 62301:2005	
	Ver. 111121

CE marking



(EC conformity marking)

Position : **CEO**

Name : **Jerry Shen**

Declaration Date: Mar. 28, 2012
Year to begin affixing CE marking:2012

Signature : _____

