

# Transformer User Manual

## TF201

### Charging Your Batteries

If you intend to use battery power, be sure to fully charge your battery pack before going on long trips. Remember that the power adapter charges the battery pack as long as it is plugged into the computer and an AC power source. Be aware that it takes much longer to charge the battery pack when the Transformer is in use.

Remember to fully charge the battery (8 hours or more) before first use and whenever it is depleted to prolong battery life. The battery reaches its maximum capacity after a few full charging and discharging cycles.

### Airplane Precautions

Ask an airline personnel if you want to use your Transformer onboard an aircraft. Most airlines have restrictions for using electronic devices. Most airlines allow electronic use only between and not during takeoffs and landings.



---

There are three main types of airport security devices: X-ray machines (used on items placed on conveyor belts), magnetic detectors (used on people walking through security checks), and magnetic wands (hand-held devices used on people or individual items). You can send your Transformer through airport X-ray machines. But do not send your Transformer through airport magnetic detectors or expose it to magnetic wands.


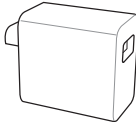



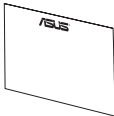
---

# Contents

Charging Your Batteries.....	1
Airplane Precautions .....	1
Contents .....	2
Package Contents .....	4
Your Transformer .....	5
Charging the Transformer .....	8
Transformer Mobile Dock (optional) .....	9
Special Keyboard Functions .....	12
Docking the Transformer.....	14
Undocking the Transformer .....	15
Charging the Transformer on the Dock.....	16
To Begin .....	17
Unlocking your Transformer .....	17
Quick Camera Mode .....	17
Home Screen .....	18
ASUS Launcher .....	19
Screen Views.....	20
Touch Panel Control .....	21
Managing Apps.....	23
Task Manager .....	26
File Manager .....	27
Market .....	30
Settings .....	31
Power Management .....	34
ASUS Battery .....	34
Music .....	35
Image .....	36
Gallery .....	36
Camera .....	40
Mail .....	42

Email .....	42
Gmail .....	44
Reading.....	45
MyLibrary .....	45
Locating.....	48
Places and Maps .....	48
Documenting .....	49
Polaris® Office .....	49
Sharing.....	53
MyNet .....	53
MyCloud .....	56
App Locker .....	64
App Backup .....	65
SuperNote .....	67
ASUS Pad PC Suite (on PC).....	72
My Desktop PC Server.....	72
ASUS Webstorage.....	72
ASUS Sync .....	73
Declarations and Safety Statements .....	75
Federal Communications Commission Statement.....	75
RF Exposure Information (SAR).....	75
IC Regulations.....	76
IC Radiation Exposure Statement.....	76
CE Mark Warning.....	77
Power Safety Requirement .....	77
ASUS Recycling/Takeback Services.....	77
Copyright Information .....	79
Limitation of Liability .....	79

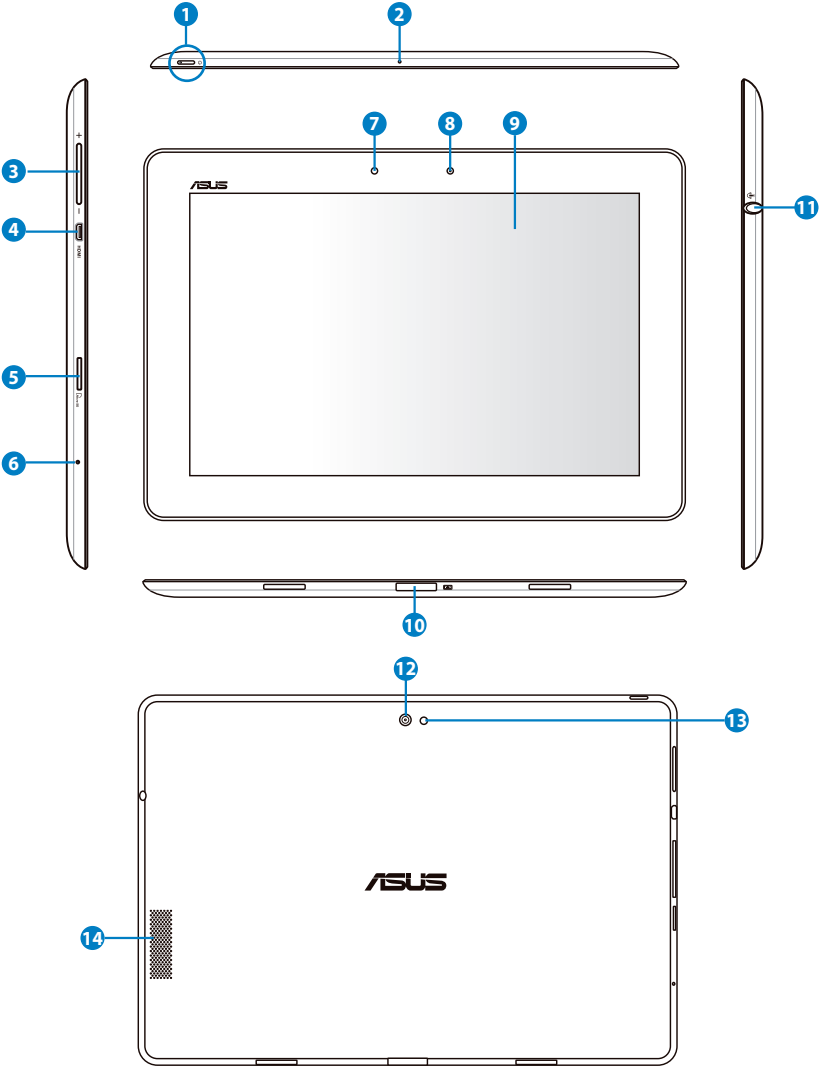
# Package Contents

	
Transformer	USB Charger
	
Power Plug	Dock connector to USB cable
	
User Manual	Warranty Card



- If any of the items is damaged or missing, contact your retailer.
- The power plug that comes with your Transformer may vary depending on your territory to fit the wall outlet.

# Your Transformer



---

## 1 Power Button

The power button turns your Transformer on/off. Hold the power button for 1.5 seconds and release the button to power on your Transformer. When the Transformer is powered on, press the power button to put the Transformer into sleep mode or wake it up from sleep mode. Hold the power button for 0.5 second to display the shutdown dialog box or hold the power button for 8 seconds to directly reboot the Transformer.

### Battery Charge Indicator (dual-color)

Dim: The power charger is not plugged in the Transformer.

Green ON: The battery level is up to 100%.

Orange ON: The Transformer is in battery charging status.

---

## 2 Built-in Microphone

The built-in mono microphone can be used for video conferencing, voice narrations, or simple audio recordings.

---

## 3 Volume Key

Press this button to increase or decrease the system volume.



Press the Volume Down key and Power button at the same time to perform default screenshot function.

---

## 4 Micro HDMI Port

Insert a micro HDMI cable into this port to connect to a high-definition multimedia interface (HDMI) device.

---

## 5 Micro SD Card Slot

Insert Micro SD card into this slot.

---

## 6 Reset Button

If the system becomes unresponsive, press the reset button to force the Transformer to restart.



Forcing the system to restart may result in data loss. Please inspect your data to ensure there is no data loss. We strongly recommend that important data be backed up regularly.

---

---

## **7 Light Sensor**

The light sensor detects the amount of light in your environment and automatically adjusts the brightness of the display panel for better viewing.

---

## **8 Built-in Front Camera**

Use the built-in camera for picture taking, video recording, video conferencing, and other interactive applications.

---

## **9 Touch Screen Panel**

The Touch Screen Panel allows you to operate your Transformer using multi-touch up to ten fingers.

---

## **10 Dock Connector**

- Insert the power adapter into this port to supply power to your Transformer and charge the internal battery pack. To prevent damage to your Transformer and battery pack, always use the bundled power adapter.
  - Connect the mobile dock connector to USB cable to the Transformer and another system (notebook PC or desktop) for data transmission.
  - Dock the Transformer to the mobile dock for extended functions, including keyboard, touchpad and USB interface.
- 

## **11 Headphone Output/Microphone Input Combo Jack**

The stereo combo jack (3.5mm) connects the Transformer's audio out signal to amplified speakers or headphones. Using this jack automatically disables the built-in speaker. For microphone input function, the jack best supports headset microphones by ASUS.

---

## **12 Built-in Rear Camera**

Use the built-in camera for picture taking, video recording, video conferencing, and other interactive applications.

---

## **13 Camera LED Flash**

Use the flash to take photos when lighting conditions are poor or when there is a backlight.

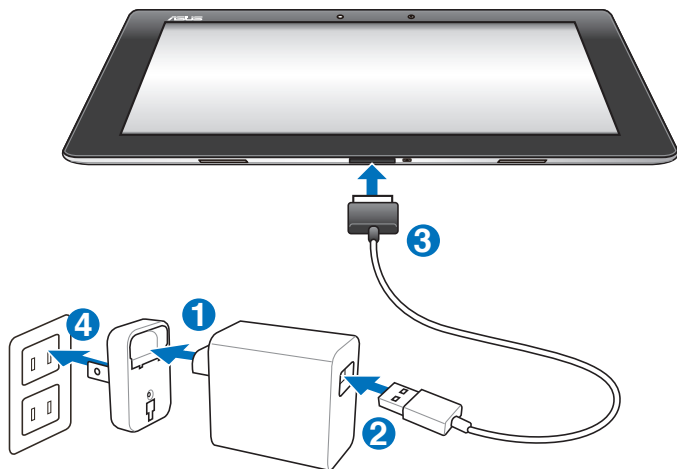
---

## **14 Audio Speaker System**

The built-in stereo speaker system allows you to hear audio without additional attachments. Audio features are software controlled.

---

# Charging the Transformer



- Use only the power adapter that comes with your device. Using a different power adapter may damage your device.
- Using the provided power adapter and USB cord to connect your Transformer to a power outlet is the best way to charge the Transformer.
- The input voltage range between the wall outlet and this adapter is AC 100V–240V, and the output voltage of this adapter is DC 15V, 1.2A.



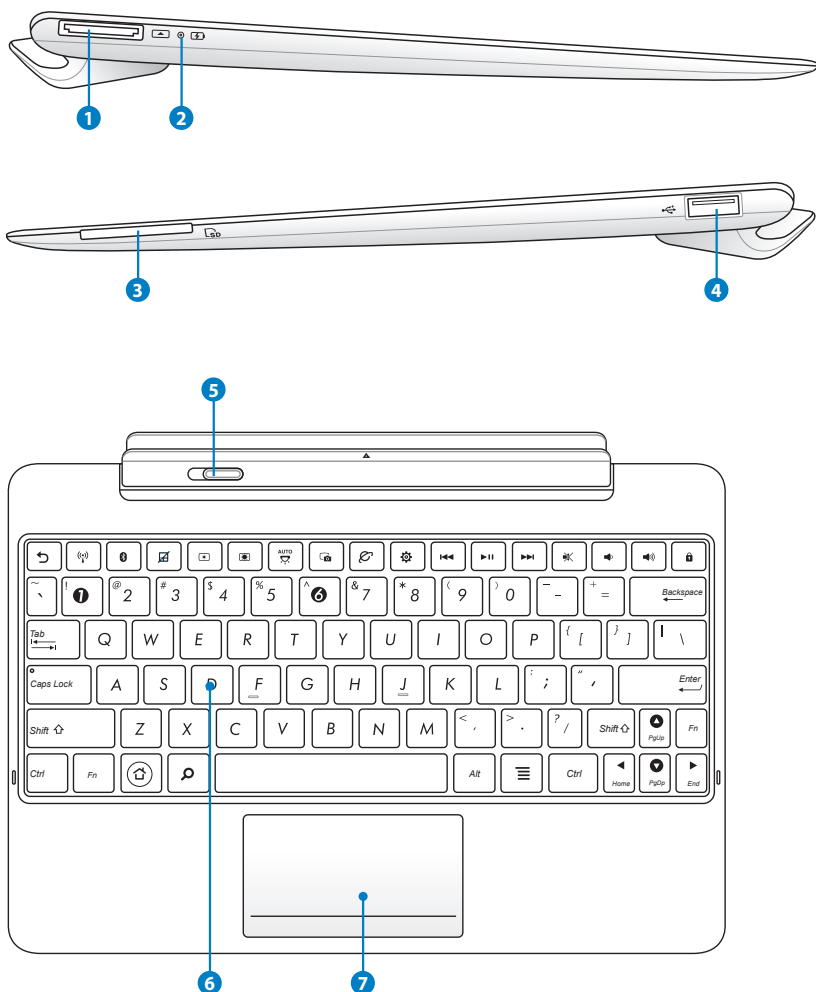
- To prolong battery life, fully charge the battery for up to 8 hours when using the Transformer for the first time and whenever the battery power is fully depleted.
- TF201 can be charged via the USB port on the computer only when it is powered off.
- Charging through the USB port may take longer time to complete.
- If the computer does not provide enough power for charging the Transformer, use the wall outlet instead.



# Transformer Mobile Dock (optional)



The Transformer mobile dock is purchased separately.



---

## 1 Dock Connector

- Insert the power adapter into this port to supply power to your Transformer and charge the internal battery pack. To prevent damage to your Transformer and battery pack, always use the bundled power adapter.
- Connect the dock connector to USB cable to the Transformer and another system (notebook or desktop) for data transmission.

---

## 2 Battery Charge Indicator (dual-color)

Dim: The power charger is not plugged in the mobile dock.

Green ON: The battery level is up to 95%.

Orange ON: The mobile dock is in battery charging status.

---

## 3 Memory Card Slot

This Transformer mobile dock has a built-in high-speed memory card reader that can conveniently read from and write to many flash memory cards.

---

## 4 USB Port (2.0)

The USB (Universal Serial Bus) port is compatible with USB 2.0 or USB 1.1 devices such as keyboards, pointing devices, flash disk drive and hard disk drives.

---

## 5 Mobile docking latch

Move the mobile docking latch to the left to release the Transformer from the mobile dock.

---

## 6 Keyboard

The keyboard provides comfortable travel (depth at which the keys can be depressed) and palm rest for both hands.



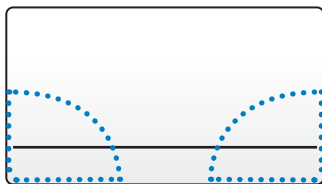
---


The keyboard differs by territory.

---

## 7 Touchpad

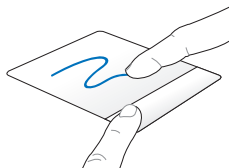
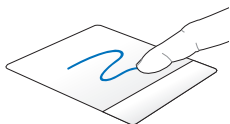
Click the touchpad area marked below to simulate the left and right mouse buttons.



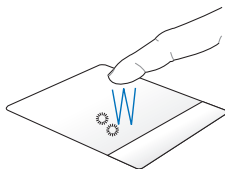
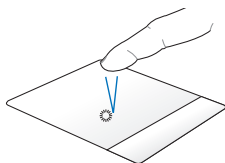
Use the hot key  to disable the touchpad.

## Using the Touchpad

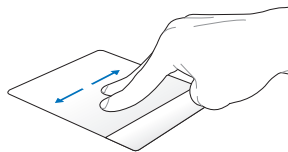
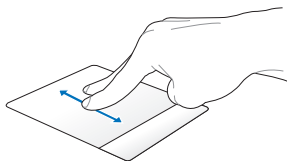
A



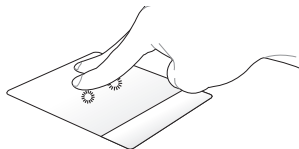
B



C



D



- A. Slide your finger across the touchpad to move the pointer. You can also hold the left button and slide your finger to drag the selected item.
- B. Single tap to select an item. Double tap to launch item.
- C. Slide two fingers to scroll up/ down or move up/down/left/right.
- D. Use two fingers to hold a selected item.

## Special Keyboard Functions

The following defines the hot keys on the Transformer mobile dock's keyboard. Some commands may have standalone function and some must combine with the function key <Fn>.



The Hot Key locations on the function keys may vary depending on model but the functions should remain the same. Follow the icons instead of the function keys.



Returns to the previous page.



Toggles the internal wireless LAN ON or OFF.



Toggles the internal Bluetooth ON or OFF.



Toggles the touchpad ON or OFF.



Decreases display brightness.



Increases display brightness.



Toggles the ambient light sensor ON or OFF.



Captures screen image.



Initiates web browser.



Opens the **Settings** screen.



Returns to the previous track when playing music.



Starts playing music from your playlist. Resumes or pauses the current music playing.



Fast forwards or skips to the next track during the music playing.



Mutes the speaker.



Decreases the speaker volume.



Increases the speaker volume.



Locks the Transformer and puts it into sleep mode.

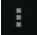



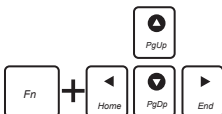
Returns to Home Screen.



Browses the contents in the Transformer and the web.

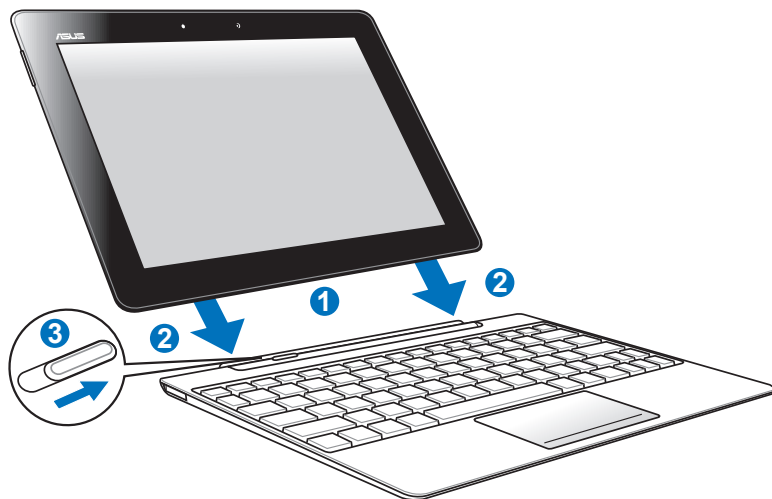


Activates the properties menu and is equivalent to  or  on the screen.



Press <Fn> and arrow keys to scroll up and down or scroll to the start and end in documents.

# Docking the Transformer

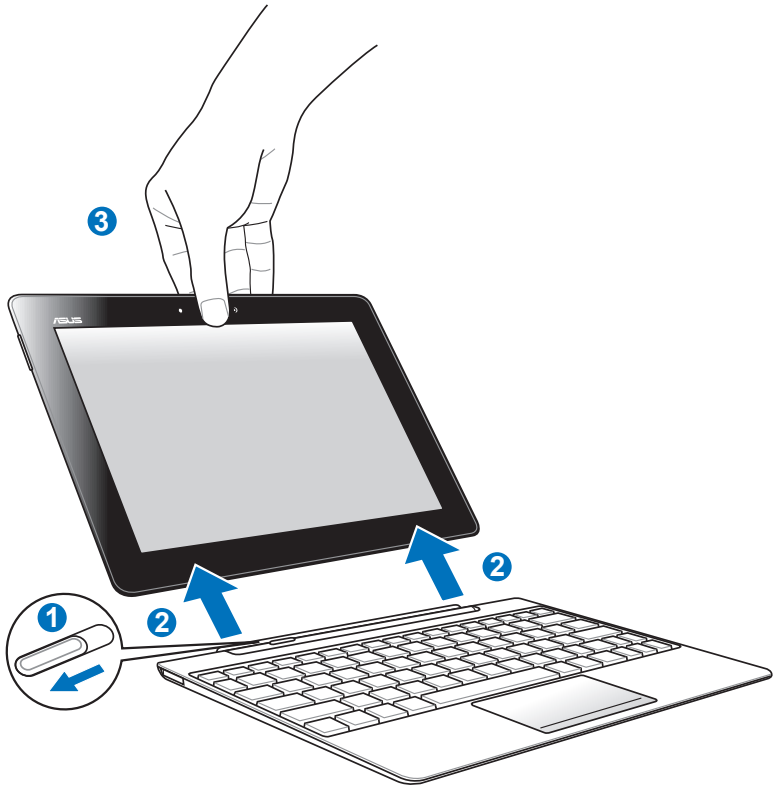


1. Align the Transformer with the mobile dock.
2. Firmly insert the Transformer into the socket until it snaps in place and the Transformer is properly seated.
3. Ensure that the latch completely moves to the right.



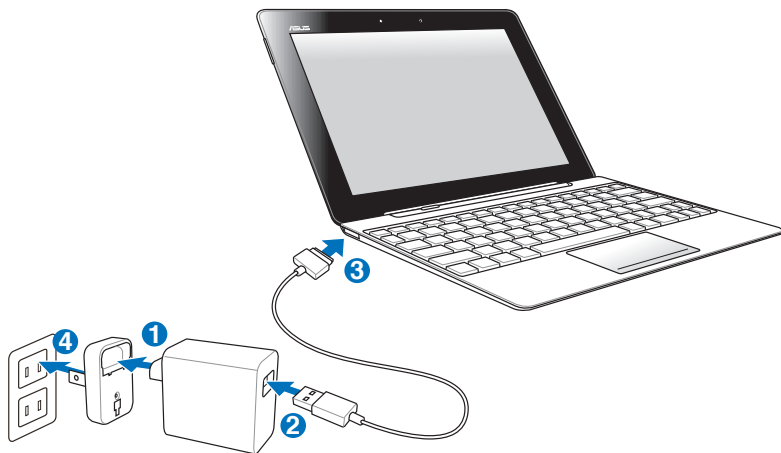
When your Transformer is attached to the mobile dock, never pick up the Transformer alone. Always pick up the entire assembly from the bottom of the mobile dock.

# Undocking the Transformer



1. Use one hand to move the latch to the left to release the Transformer and stabilize the mobile dock.
2. Use the other hand to remove the Transformer from the mobile dock.

# Charging the Transformer on the Dock



- Use only the power adapter that comes with your device. Using a different power adapter may damage your device.
- The input voltage range between the wall outlet and this adapter is AC 100V–240V, and the output voltage of this adapter is DC 15V, 1.2A.



- To prolong battery life, fully charge the battery for up to 8 hours when using the Transformer for the first time and whenever the battery power is fully depleted.
- The Transformer cannot be charged via USB cord when it is connected to the mobile dock.



# To Begin

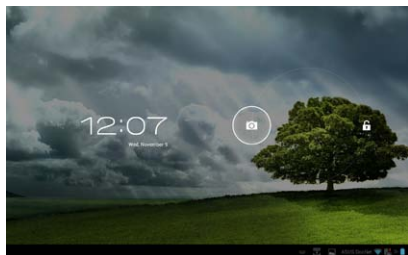
## Unlocking your Transformer

Tap and drag the lock out from the circle to the **lock icon** to unlock your Transformer.



## Quick Camera Mode

Tap and drag the lock out from the circle to the **camera icon** to enter the **Camera** mode.



## Home Screen



The Home Screen may update and change with Android OS.

# ASUS Launcher

Display local weather information. Tap to customize weather widget settings, location, and frequency updates.



Display local date

Display your e-mail inbox. Tap to configure the email account for the first time, and tap to read unread e-mails in the e-mail inbox folder.

# Screen Views

The screen view rotates by itself when you hold the tablet horizontally to vertically, and vice versa. To enable/ disable Auto-rotate screen, go to Settings>Display to configure.

## Landscape view



## Portrait view



# Touch Panel Control

## Single-tapping

- Single-tapping the touch panel allows you to select a desired item or activate an application.
- Single-tapping in the **File Manager** allows you to open, select, **Copy**, **Cut**, **Delete**, or **Rename** the desired files.

## Tap-and-holding

- Tap and hold an application to drag and drop it or its shortcut to another Home Screen page.
- Tap and hold the **Recent Apps Key** to capture screen images. (To enable Screenshot, go to Settings> ASUS customized setting)
- Tap and hold a file in the **Gallery** to enter selection mode.

## Zooming

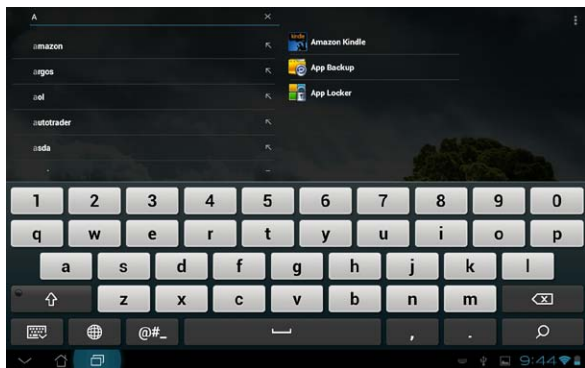
Spread apart or bring two fingers together to zoom in or out an image in **Gallery**, **Maps**, or **Places**.

## Flipping

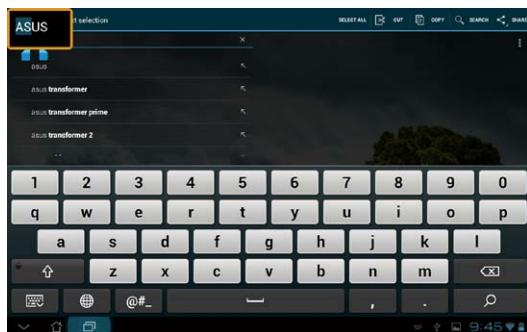
Use one finger to flip back and forth between home screens, through different images in the **Gallery** or pages in **MyLibrary** and **SuperNote**.

## Inputting, inserting, selecting, and copying text

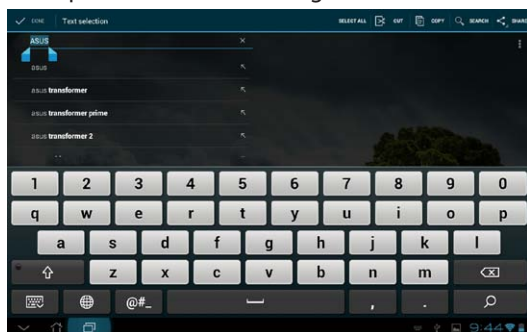
When the Transformer is undocked, the panel keyboard appears when tapping on any text insertion bars or word processors. On Google Text Search on the upper left corner, type in the web browser bar to search the web and your tablet, or to launch apps.



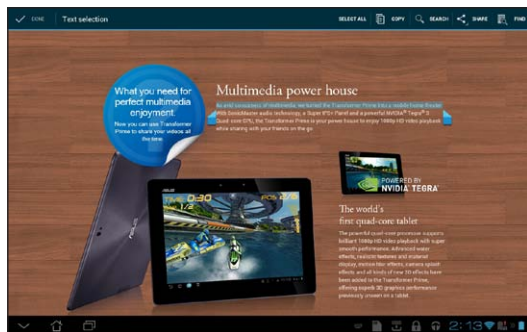
After typing in Google Text Search, tap on the text you have just inputted and you will see an insertion point. Move by dragging the point or tapping on the space you would like to insert a letter or a word.



Double tap or hold the text to cut or copy the selected text. You can move the selection tab to expand or reduce the range of the selected text.



Tap or hold the desired text on the web page and a tool bar appears on the top. You can copy, share, select, find, or search on the web.



# Managing Apps

## App Shortcut

You can create shortcuts for your favorite apps on your Transformer Home Screen.

1. Tap on the top right corner of the Home Screen to access the tablet utilities.
2. In the **Apps menu**, tap and hold the desired app and it will take you to the Home Screen.
3. Drag and place the app on your desired Home Screen page.

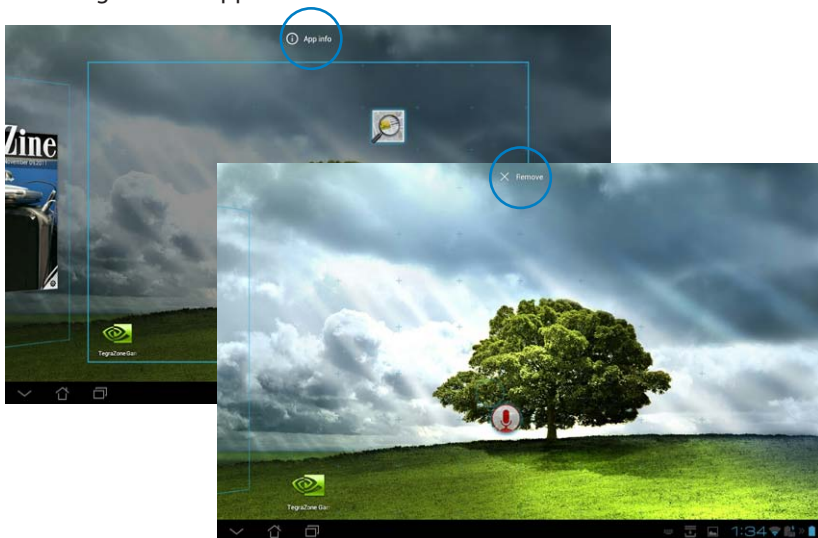
## App info

You can view detailed app information while you are creating a shortcut for the app. When holding an app from Apps menu to Home Screen, the **App info** will appear on the top of the Home Screen page. Continue dragging the held app to **App info** to display its detailed information.

## Removing App from Home Screen

You can remove app shortcuts from your Transformer Home Screen. The original app will remain in your Apps menu.

1. Tap and hold an app on your Home Screen. **Remove** will appear on the top of the Home Screen page.
2. Drag the held app to **Remove** to clear it from the Home Screen.

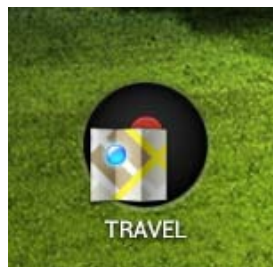
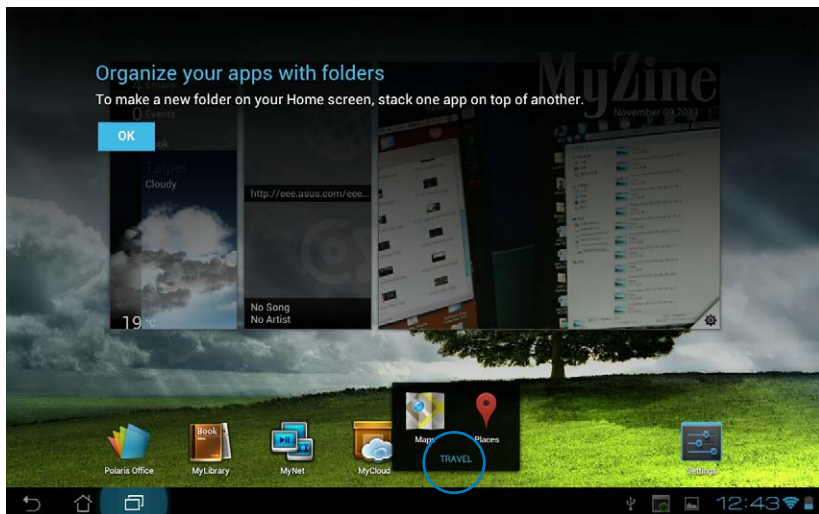




## App Folder

Create folders to organize your applications and shortcuts on your Transformer Home Screen.

1. On your Home Screen, tap and drag an app or shortcut onto another. A folder will appear.
2. Tap the new folder and tap **Unnamed Folder** to rename the folder.

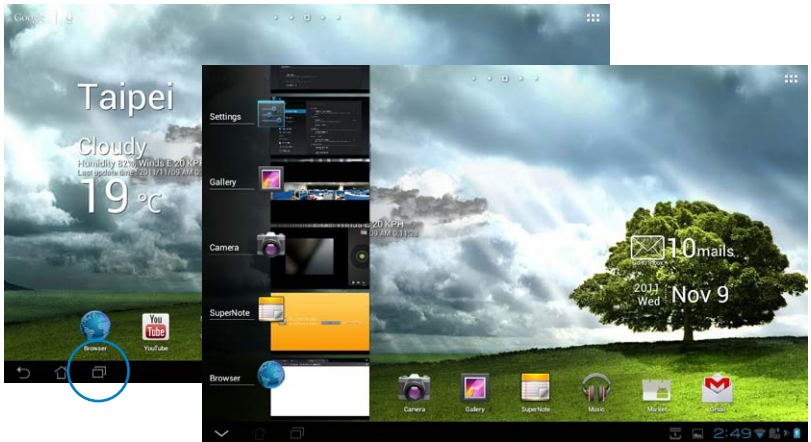




## Recent Apps

Recent apps in use are displayed in the left panel of the Home Screen. You can find detailed information and manage your apps from the Recent Apps list.

1. Tap the **Recent Apps** icon at the lower left corner of the Home Screen.



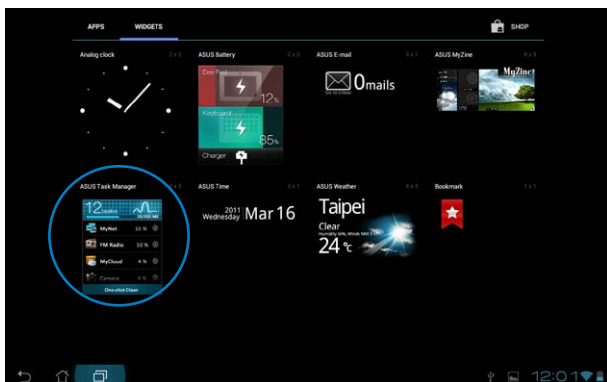
2. Swipe up and down the list to view **Recent Apps**. Swipe a recent app to the left or right to remove from list.
3. Tap and hold a recent app to display menu. Select to remove app from list or display app information.



# Task Manager

ASUS widget displays a list of currently running utilities and applications and their usages in percentages on your Transformer.

1. Tap on the top right corner of the Home Screen to access the tablet utilities.
2. Tap **Widgets** to display the widgets menu.
3. Tap and hold **ASUS Task Manager**. The ASUS Task Manager box will appear on the Home Screen.



4. Tap and hold the widget to display the sizing brackets. Pull up or downwards to show the complete list of tasks.
5. Tap the **x** icons on the right of the tasks to shut down task. Tap **One-click Clean** to shut down all running tasks at once.



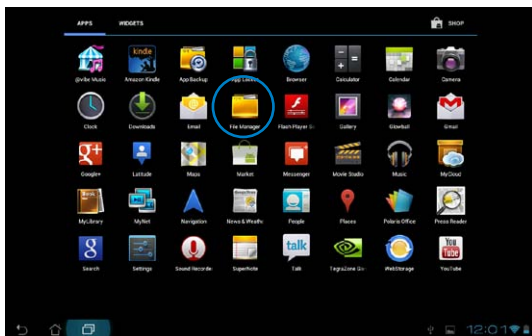
# File Manager



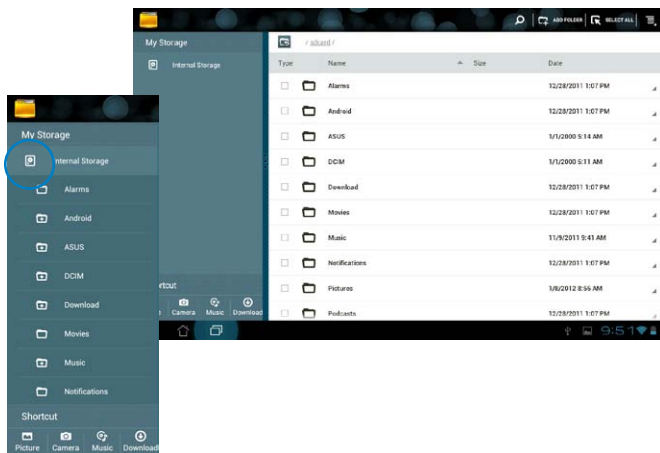
File Manager allows you to easily locate and manage your data either on the internal storage device or the connected external storage devices.

To access the internal storage:

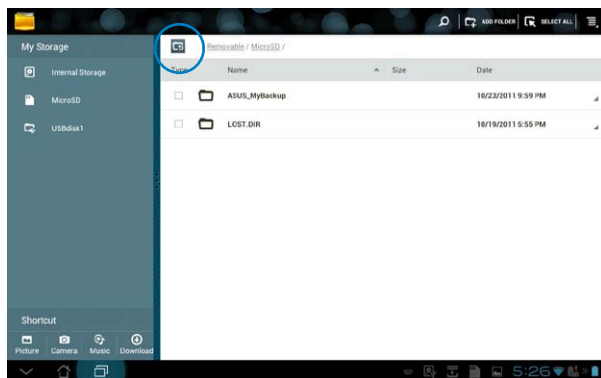
1. Tap on the top right corner of the Home Screen to access tablet utilities.
2. In the **Apps menu**, tap on **File Manager** to go into **My Storage**.



3. The Internal Storage (/sdcard/) and any connected external storage devices (/Removable/) are displayed on the left panel. Tap on the source icon on the left panel to display content list. Select a source by tapping to view the content.



4. Tap on the **Return** folder icon to return to the root directory of **My Storage**.

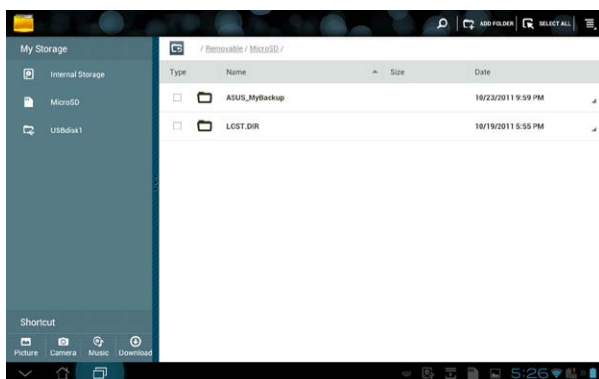


To access the external storage device directly:

1. Tap the USB or SD card icon on the bottom right corner.
2. Tap on the folder icon in the pop-up notification box.

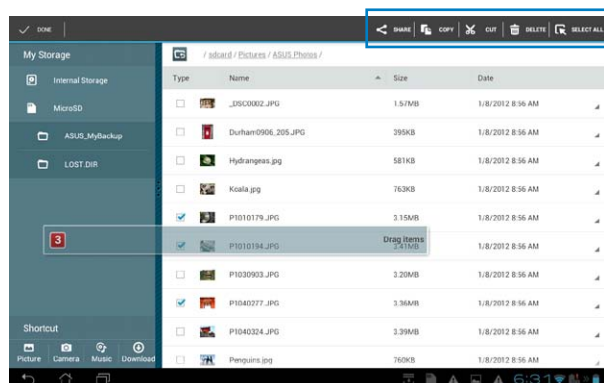


3. The content of the external storage device (Removable/XXX/) is displayed.



To copy, cut, delete, or share files:

Tick the file and tap on the action icon at the tool bar on the upper right.  
Or, tick the file and drag to drop in the destination.

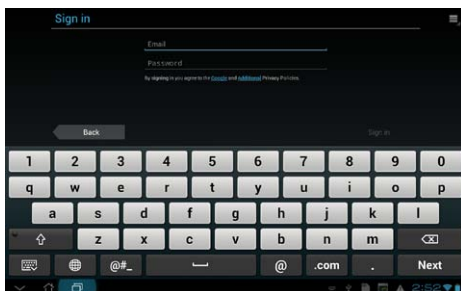
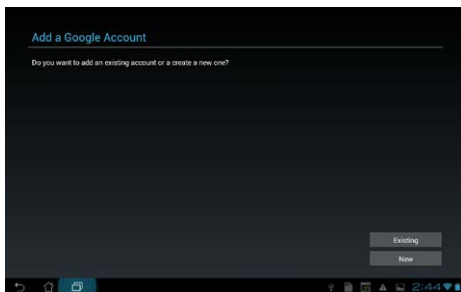


# Market



Access all kinds of enjoyment and tools in the Android Market with your Google account. Set up your account for the first time and you can access the market anytime you want.

1. Tap on the top right corner of the Home Screen to access tablet utilities.
2. In the **Apps Menu**, tap on the **Market** icon.
3. You have to add an account to your Transformer to continue. Tap **Existing** to continue. Tap **New** to create your Google Account.
4. Enter your **Email** and **Password** to **Sign in** if you already have an account.



5. After signing in, you can download and install applications from the Android Market.



Some applications are free and some might charge you through a credit card.



Download the latest Adobe Flash Player version 11.1.112.60 for ICS devices.



You cannot restore the deleted applications, but you can login with the same ID and download them again.

# Settings

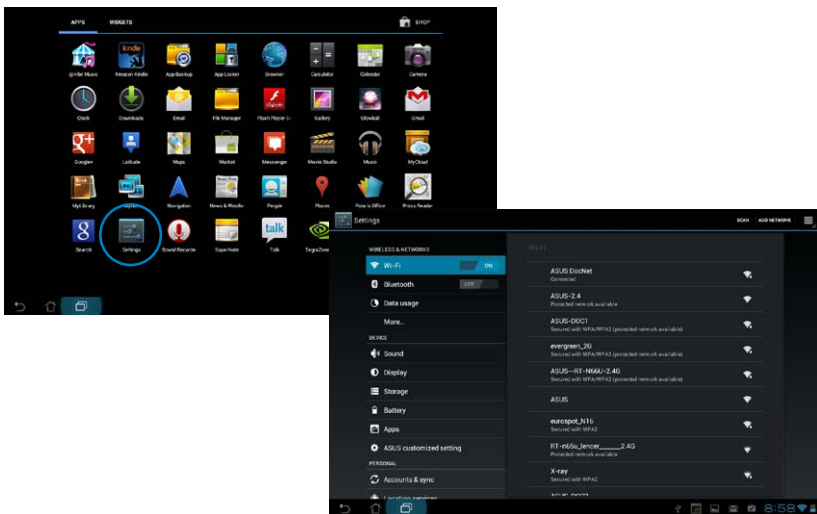


Settings screen allows you to configure the settings of your Transformer, including **Wireless & networks**, **Device**, **Personal**, and **System**. Tap on the tabs on the left to switch screens and do the configurations.

There are two ways to enter the **Settings** screen.

From the **Apps menu**:

Tap on **Settings** to display the settings menu.



## From **ASUS Quick Setting**:

Tap on the notification area on the bottom right corner. The **Quick Setting** panel will pop up on the right.



Display local date and time

Internet connection status

Performance setting

Super IPS+ (Outdoor mode)

Dock / Pad Battery Status

Settings Menu

Brightness Manual Adjustment (IPS mode)

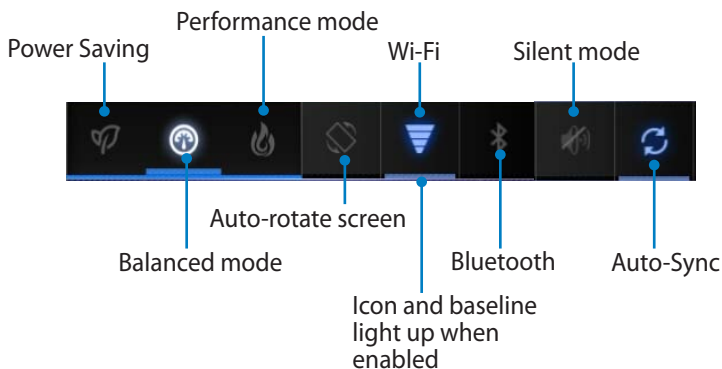
Auto Brightness

Quick Setting Adjustment Panel.  
Tap on the individual icons to turn on/ off the function.



## ASUS Quick Setting Adjustment Panel

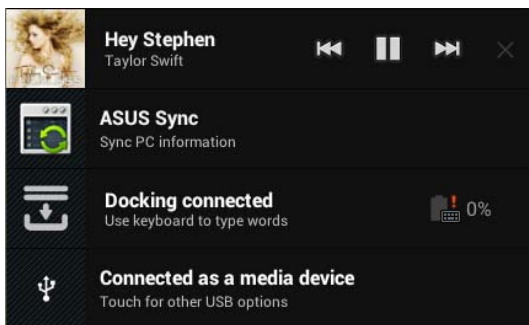
Tap on the individual utility icons to enable or disable its function.



- Balanced mode: [Default] Optimal battery status and performance
- Performance mode: Optimal system performance
- Power saving mode: Energy saving

## Notification Panels

Notification panels will appear under the Quick Setting panel for prompt updates in apps, incoming emails, and utility status.



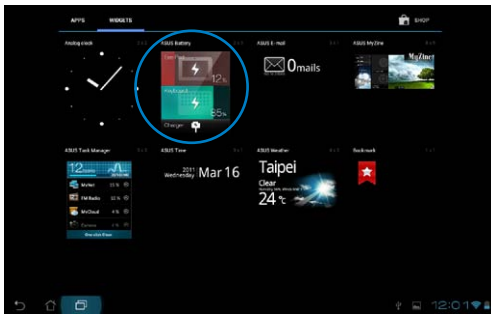
1. Swipe a prompt update to the left or right to remove from list.
2. You can enable or disable **ASUS Quick Setting** to Simplified Mode in Settings> ASUS customized setting> NOTIFICATION PANEL.

# Power Management

## ASUS Battery

This featured widget shows the individual battery status of the Transformer and keyboard dock by percentage and color. The more battery power, the brighter the color.

1. Tap on the top right corner of the Home Screen to access tablet utilities.
2. Tap on **Widgets** to display the widgets menu.
3. Tap and hold **ASUS Battery**. The ASUS Battery box will appear on the Home Screen.



4. ASUS Quick Setting and the notification panel also display battery status. The battery status of the Transformer and dock are shown separately. When low in power, the battery icon color turns from blue to red accompanied by an exclamation mark. There will also be a warning sound to notify users of low battery status.



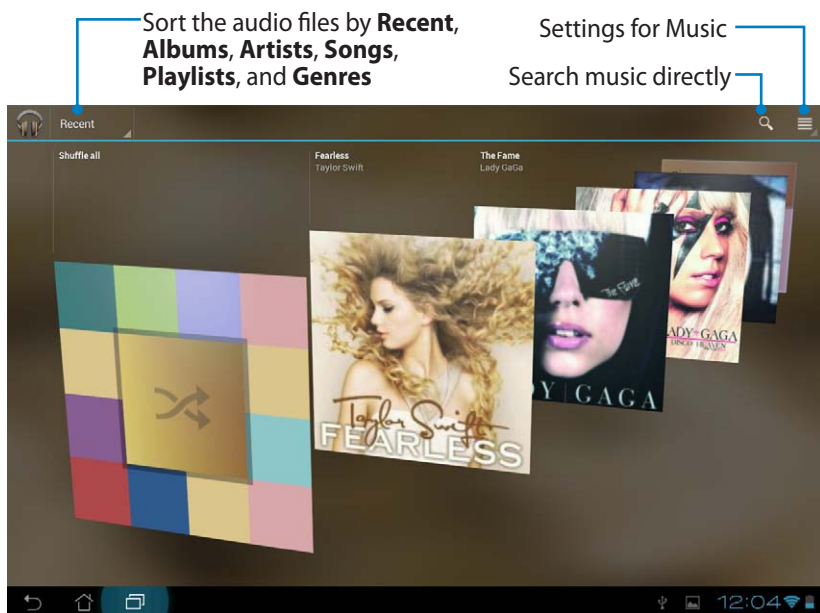
# Music



Tap **Music** on the Home Screen to play your desired music files. This application automatically collects and displays all the audio files stored in your Transformer and the connected external storage devices.

You can shuffle and play all audio files randomly or flip to select your desired album for music enjoyment.

Use the buttons on the top to either sort or search your audio files quickly.



The audio and video codec supported by TF201:

Decoder

Audio Codec: AAC LC/LTP, HE-AACv1(AAC+), HE-AACv2(enhanced AAC+), AMR-NB, AMR-WB, MP3, FLAC, MIDI, PCM/WAVE, Vorbis, WAV a-law/mu-law, WAV linear PCM, WMA 10, WMA Lossless, WMA Pro LBR

Video Codec: H.263, H.264, MPEG-4, VC-1/WMV, VP8

Encoder

Audio Codec: AAC LC/LTP, AMR-NB, AMR-WB

Video Codec: H.263, H.264, MPEG-4

# Image

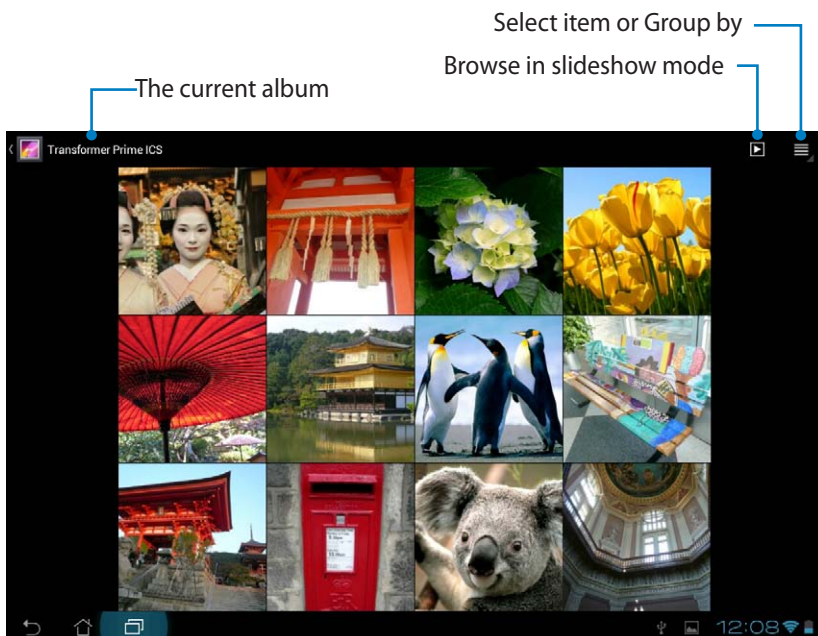
## Gallery



Tap on **Gallery** on the Home Screen to browse your desired image or video files. This application automatically collects and displays all the image and video files stored in your Transformer.

You can play all image files in a slideshow, or tap to select your desired image or video files.

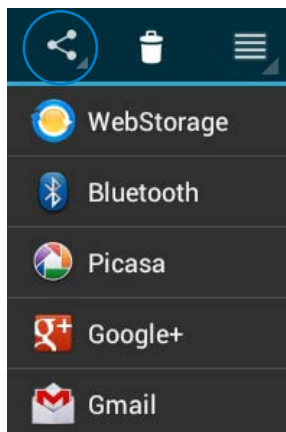
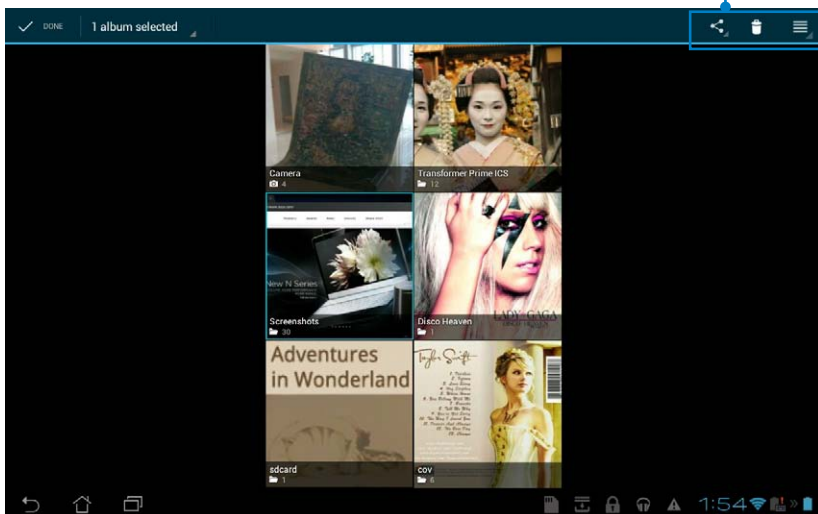
Use the button on the top to sort the files by album, by location, by time, by people, or by tags.



## Sharing, and deleting albums

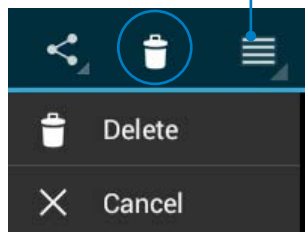
Tap on a desired album in the gallery and hold until the tool bar on the top appears. You can upload, delete, or share selected albums through the Internet.

Tool bar



Share the selected album through ASUS Webstorage, Bluetooth®, Picasa®, Google+®, or Gmail®.

Album details

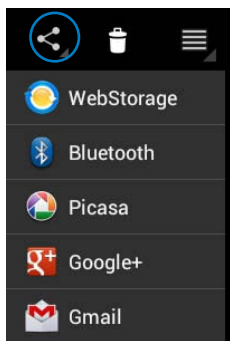
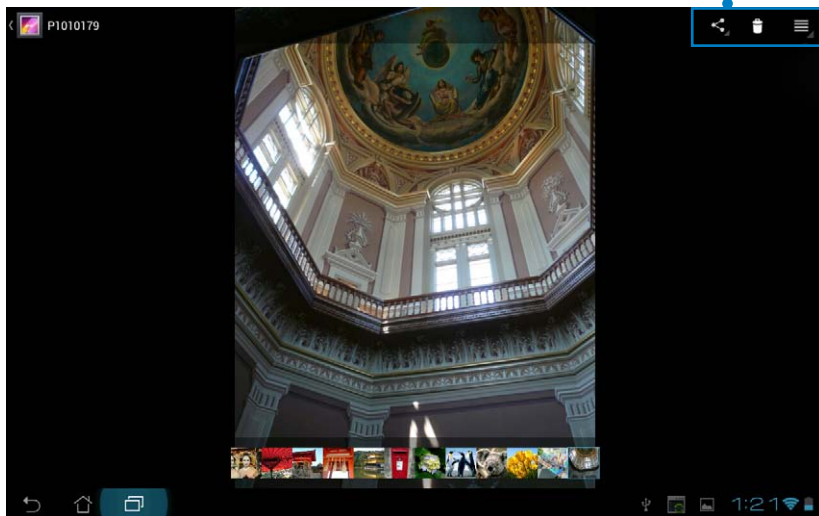


Delete the selected album.

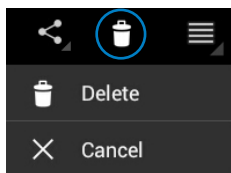
## Sharing, deleting, and editing images

Tap on a desired image in the gallery and use the tool bar on the top right corner to share, delete, or edit a selected image.

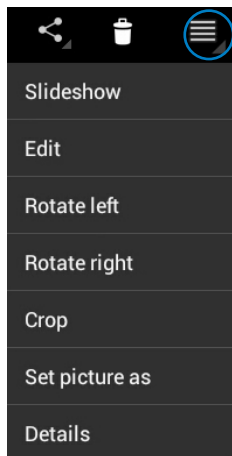
Tool bar



Share the selected album through ASUS Webstorage, Bluetooth®, Picasa®, Google+®, or Gmail®.



Delete the selected image.



Check the image information, and edit the selected image.

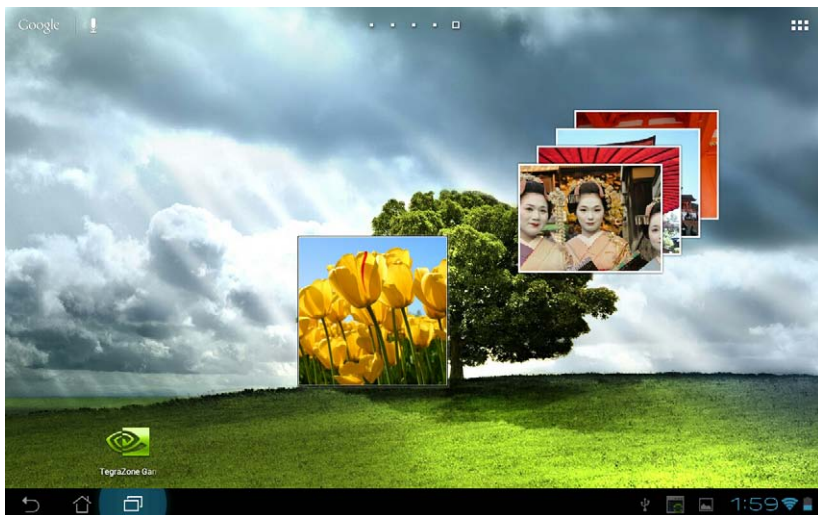
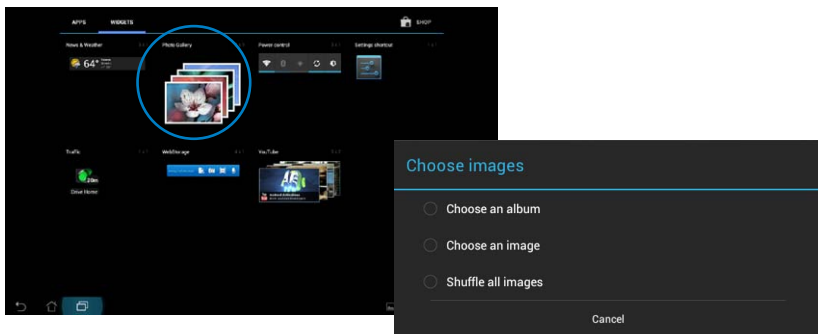


You cannot restore a deleted file.

## Gallery widget

The **Photo Gallery** widget allows immediate access to your favorite photos or albums right from the Home Screen.

1. Tap on the top right corner of the Home Screen to access tablet utilities.
2. Tap on **Widgets** to display the widgets menu.
3. Tap and hold **Photo Gallery**. The gallery widget box will take you the Home Screen and a **Choose images** menu box appears.
4. Choose the album or image(s) to place as a shortcut on the Home Screen.





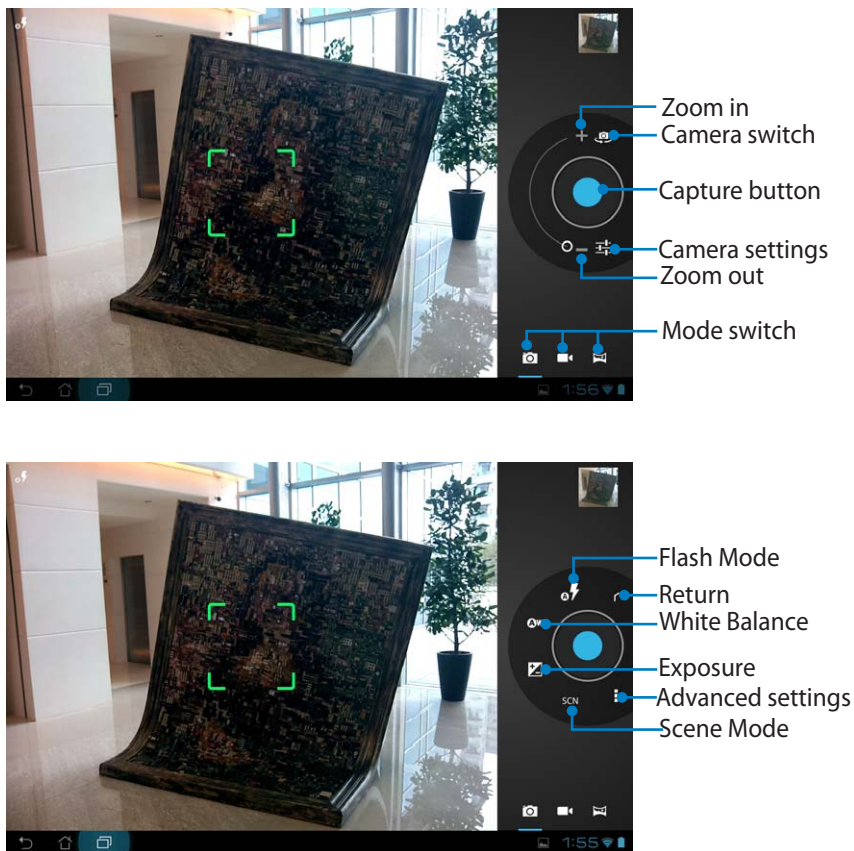
# Camera



Tap **Camera** on the Apps menu to take pictures, record videos, and create panoramic images. You can use either the front camera or the back camera to take pictures or record videos.

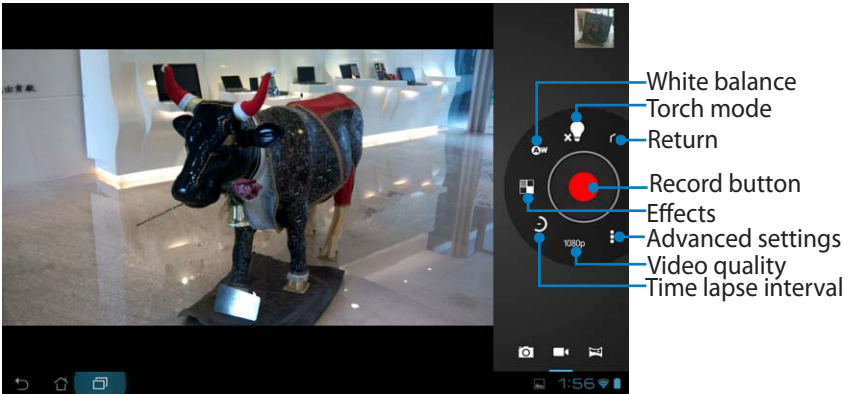
The image files will be saved to **Gallery** automatically.

## Camera mode





## Video mode



## Panoramic mode



## Panoramic image



# Mail

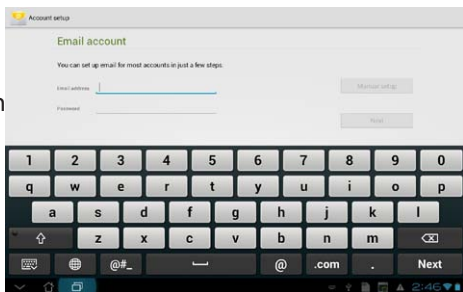
## Email



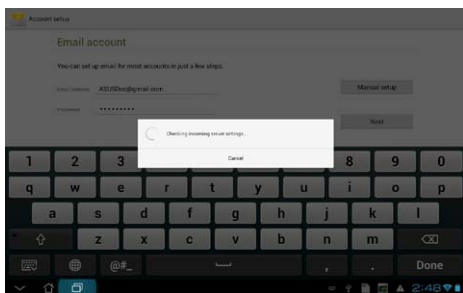
Email allows you to add several e-mail accounts and conveniently browse and manage your e-mails.

To set up an Email account:

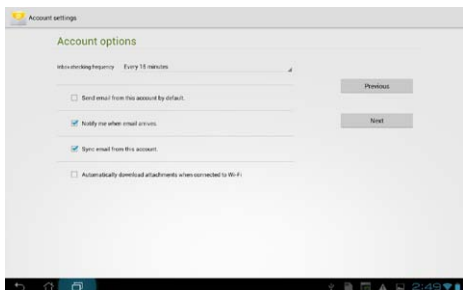
1. Tap on Email on the **Apps menu**. Enter your **Email address** and **Password**, then tap **Next**.



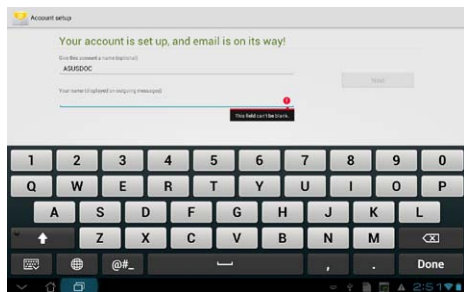
2. Please wait while the Transformer automatically checks your outgoing mail server settings.



3. Configure the **Account options** and tap **Next**.

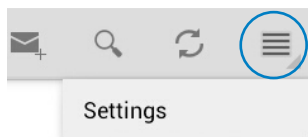


4. Name the account and enter your desired name displayed on the outgoing messages. Tap **Next** to login your mail inbox directly.

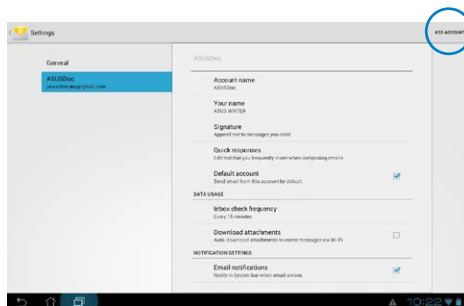


To add Email accounts:

1. Tap on Email and login using the account that you've previously set up.
2. Tap on **Settings** on the top right corner.



3. All the preferences of this account are displayed. Tap **Add account** on the top right corner to add another account.



You can include all your e-mail accounts in **Email**.



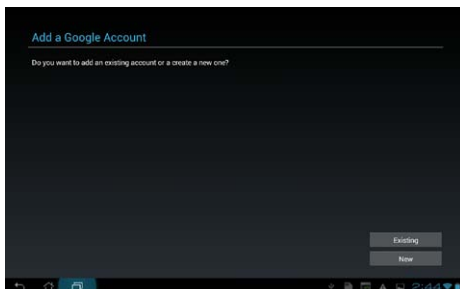
Gmail (Google mail) allows you to access your Gmail account, receive, and compose e-mails.

To set up a Gmail account:

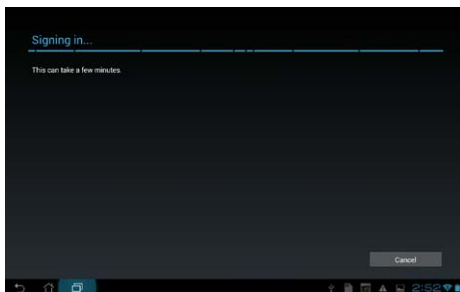
1. Tap on Gmail on the **Apps** menu. Tap **Existing** and enter your existing **Email** and **Password**, then tap **Sign in**.



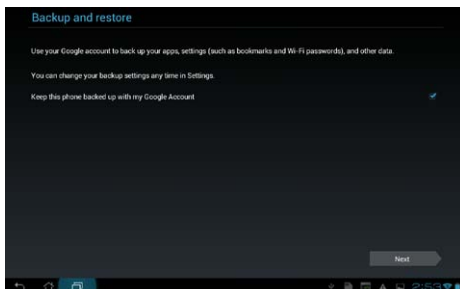
Tap **New** if you do not own a **Google Account**.



2. Please wait while your Transformer communicates with Google servers to set up your account.



3. You can use your Google account to backup and restore your settings and data. Tap **Done** to sign in to your Gmail.



If you have several e-mail accounts in addition to Gmail, use **Email** to save your time and access all your e-mail accounts at same time.

# Reading

## MyLibrary

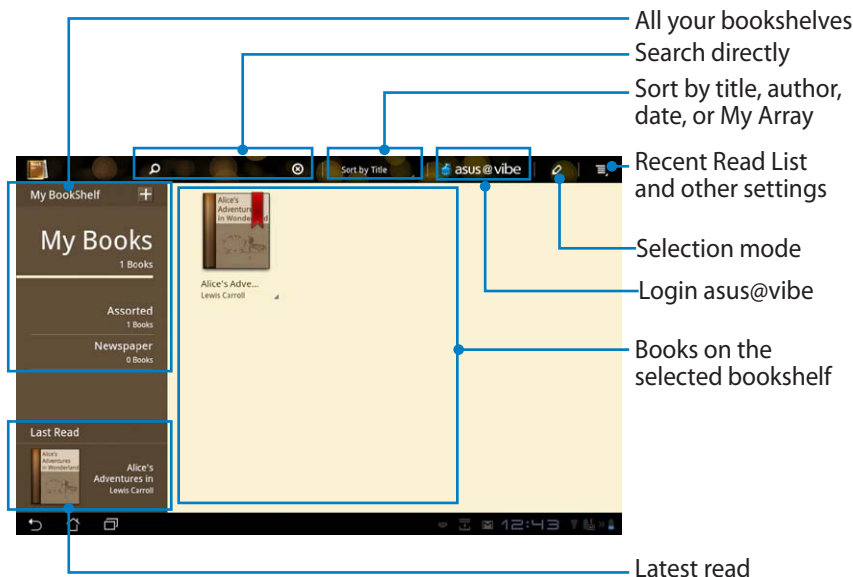


MyLibrary is an integrated interface for your book collections. You can build up different bookshelves for different genres. Your purchased e-books from all different publishers are also placed on the shelves.

Login @Vibe to download more e-books.

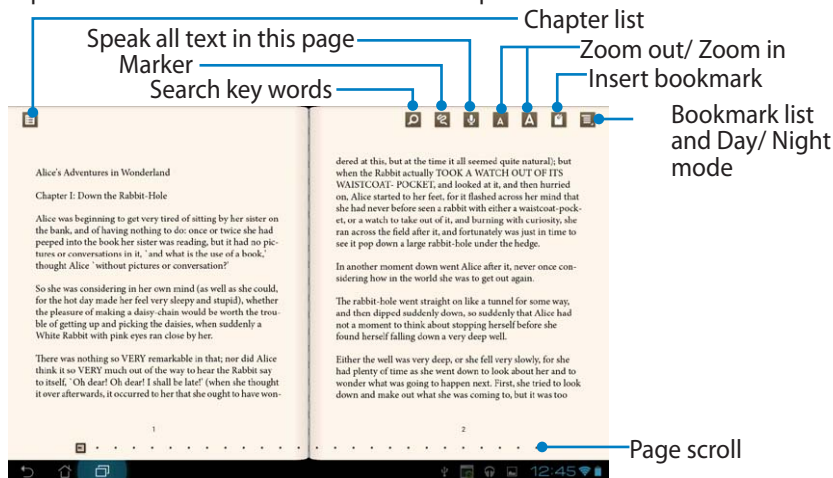


- MyLibrary supports e-books in ePub, PDF and TXT format.
- Some previewed content may need Adobe Flash® player from the Android Market to open. Download Adobe Flash® player before using MyLibrary.



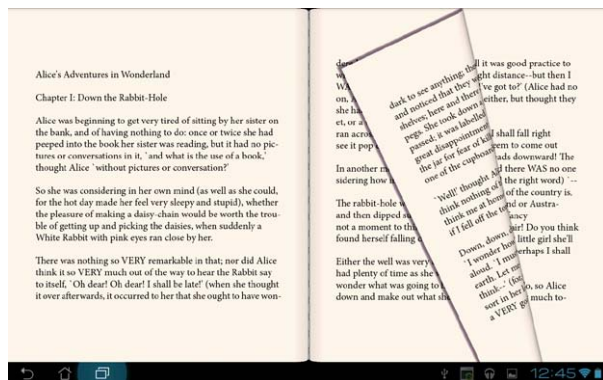
## Reading your e-books

1. Select and tap on your desired e-book on the bookshelf.
2. Tap the screen to show the tool bar on the top.



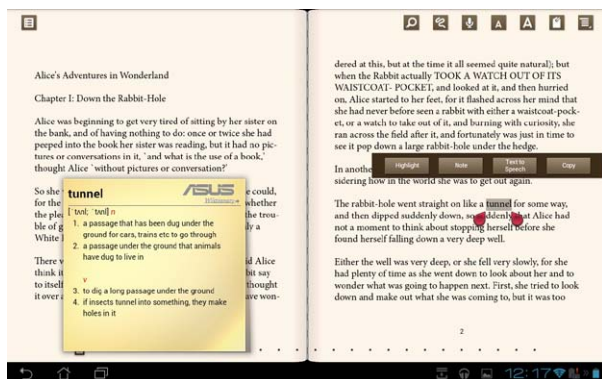
1. Android initiates the download and installation of necessary resource if you would like to use the text-to-speech function.
2. Tap on the Bookmark list and select the marked page to show the bookmark icon on the upper right corner of the screen.

3. Flip pages like a real book or move the page scroll at the bottom.



## Making notes on your ebooks

1. Long press on the desired word or sentence until the tool menu and the dictionary definition are displayed.



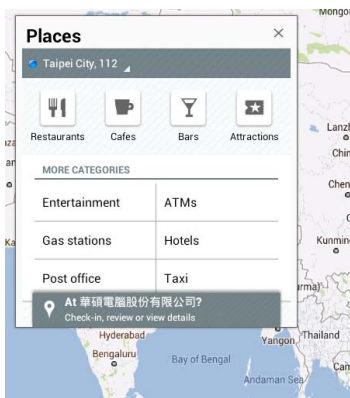
2. You can highlight the selected word with a marker, add a note, speak the selected text, or simply copy the word.
3. Move selection tab to extend the selected region to a whole phrase or sentence if needed.

# Locating



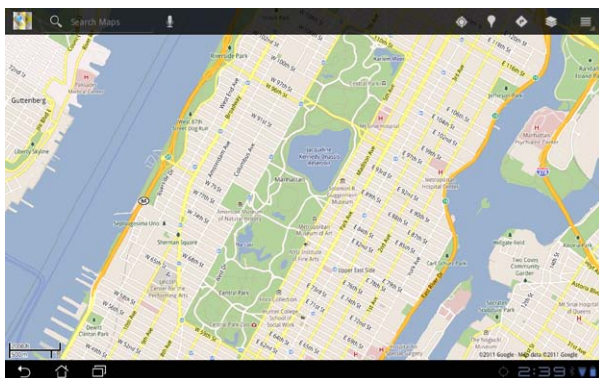
## Google Places

Places offers you information of nearby attractions, including restaurants, coffee shops, gas stations, etc... Check-in to your current location for position acquisition.



## Google Maps

Maps helps you locate where you are. Use the tool bar on the top to get directions or create your own maps.





# Documenting

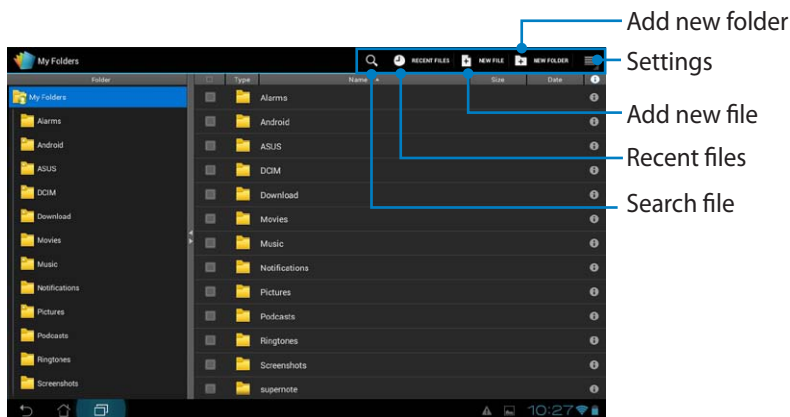
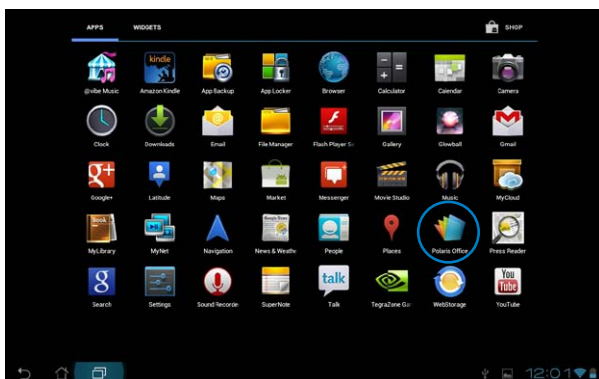
## Polaris® Office



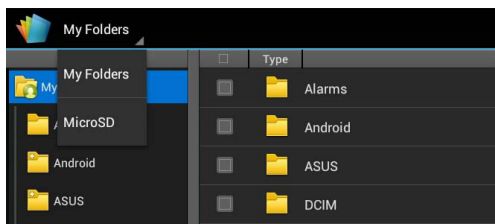
Polaris® Office is an office software that supports Document, Sheet and Slide.

To start using Polaris® Office:

1. Tap on the top right corner of the Home Screen to access tablet utilities.
2. In the **Apps menu**, tap **Polaris® Office**.

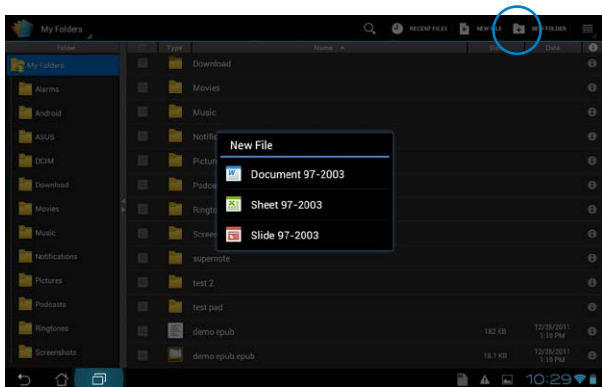


3. Tap on **My Folders** on the upper left and select the desired file.



## Adding New Files

To add new files, tap on **New File** on the top right corner. Tap on **Document** to start the word processor to edit documents. Tap on **Sheet** to start the spreadsheet to perform calculation and manage information. Tap on **Slide** to start the application to create and share presentations.



1. Polaris® Office 3.0 supports file types as below:

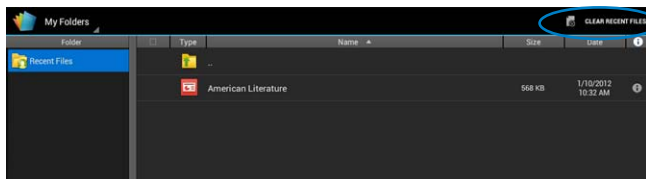
- Microsoft Word: .doc/ .docx
- Microsoft Excel: .xls/ .xlsx
- Microsoft Powerpoint: .ppt/ .pptx
- Adobe Acrobat: .pdf
- Text: .txt
- Images: .bmp/ .jpg/ .jpeg/ .png/ .gif/ .wbpm
- Zip Archives: .zip

2. Polaris® Office 3.0 currently saves files into .doc/ .xls/ .ppt formats only.

## Recent Files

Tap on **Recent Files** on the top right corner to quickly access your recently-edited files.

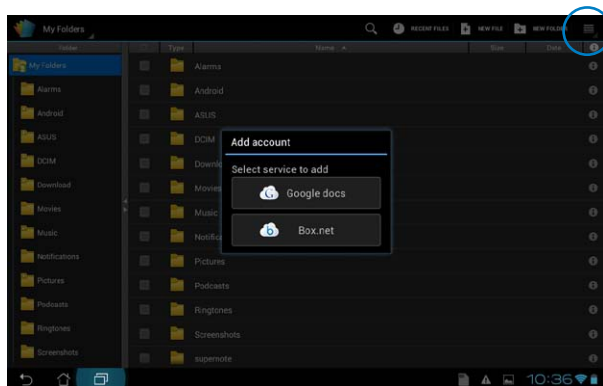
Tap on **Clear Recent Files** to clear the list of files recently used.



## Adding Accounts

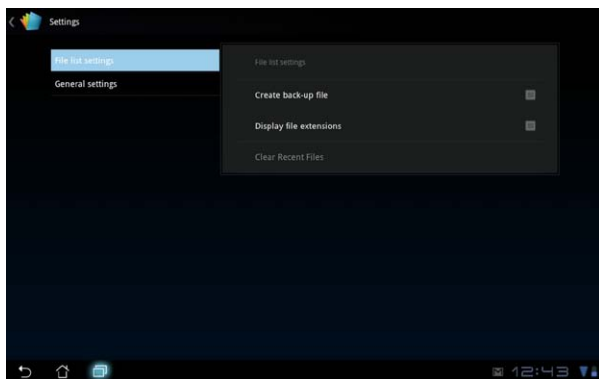
You are allowed to edit your files with Polaris® Office from other accounts, including **Google docs** and **Box.net**.

1. Tap on the settings button on the top right corner and select **Add account**.
2. Select a desired service to add.
3. Enter your e-mail account and password and tap **OK** to add the account.



## Configuring Settings

Tap settings button on the top right corner and select **Settings**. You are allowed to configure **File list settings** and **General settings**.

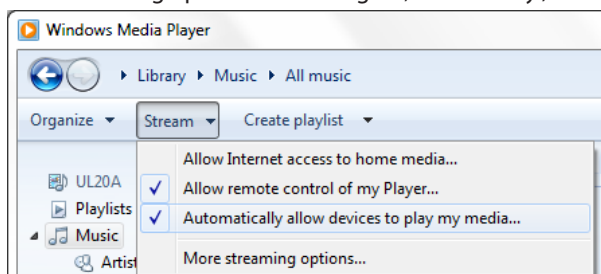


# Sharing

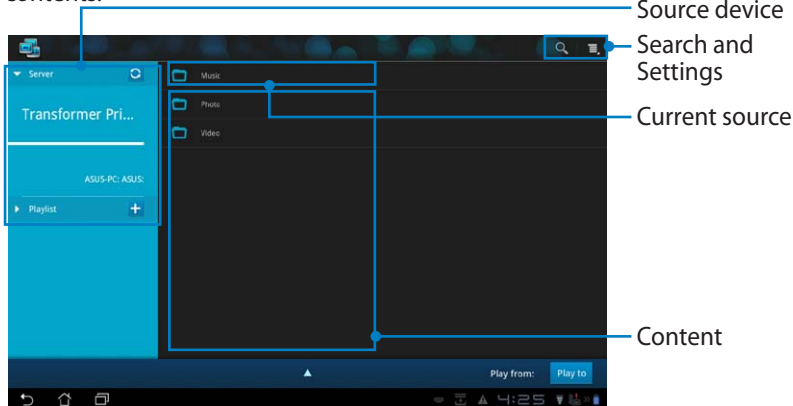


**MyNet** allows you to play media files and view image files from or to your PCs, DLNA TV or DLNA speakers. You can play music, watch videos, or view pictures stored in your Transformer on your PC and vice versa.

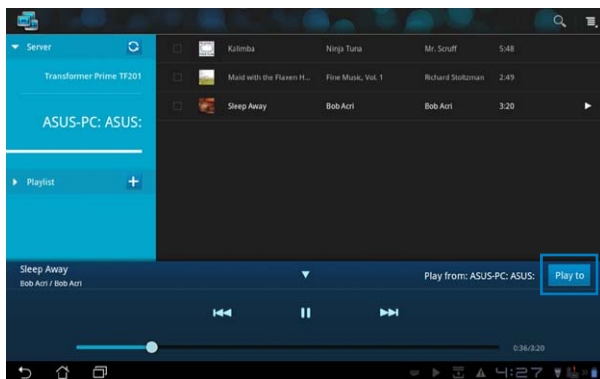
1. Ensure that your Transformer and PC are connected to the same wireless access point (AP).
2. Click and enable **Allow remote control of my Player** and **Automatically allow devices to play my media** in Windows Media Player on the PC. (Go to "More streaming options..." to configure, if necessary.)



3. On the **Server** list, select the source device on the left panel to view the contents.

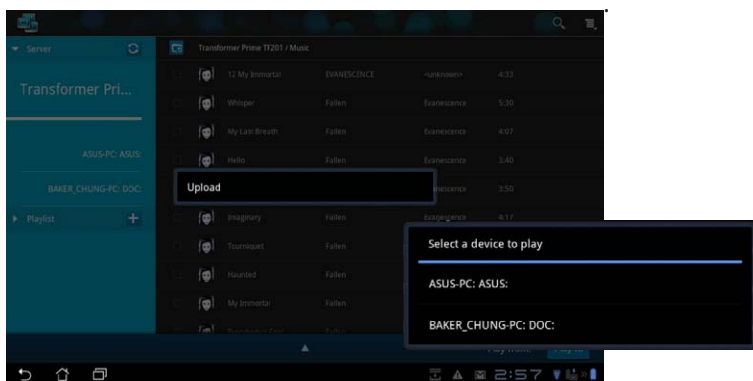


4. Select a file and tap **Play to** on the bottom right to start playing on the target device.

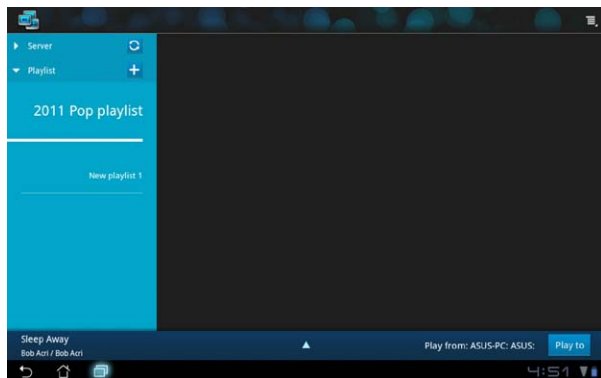


- MyNet only works with Microsoft Media Player 11 or later versions.
- All the devices, including PC, DLNA TV or DLNA speakers, must be connected to the same wireless access point (AP) while connecting via MyNet; otherwise MyNet will not function. Accordingly, MyNet will not be able to function when connecting through 3G network. Network location for connecting devices must all be set to **Home network**.

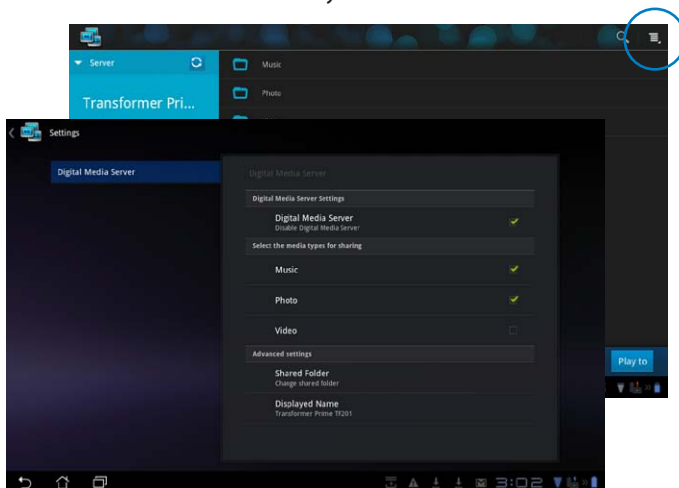
Long pressing a media file allows you to upload or download the file to and from the connecting devices.



You can also select a file from the **Playlist**. The Playlist offers a common space for the connected devices to share files. Tap on the plus sign (+) to create new lists.



5. To enable **Digital Media Server**, tap on Settings at the upper right corner and tick **Digital Media Server Settings** to allow the other connecting devices to access media files on your Transformer. You can also select the location of the file you want to share.

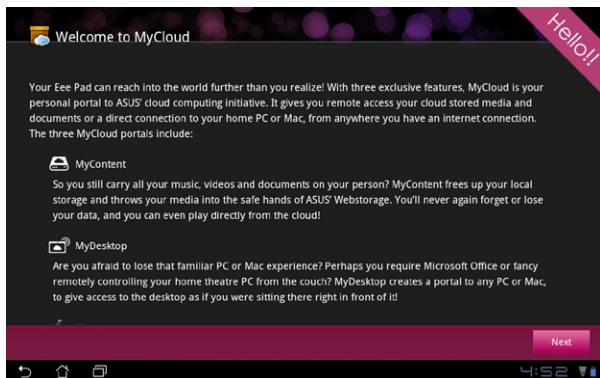




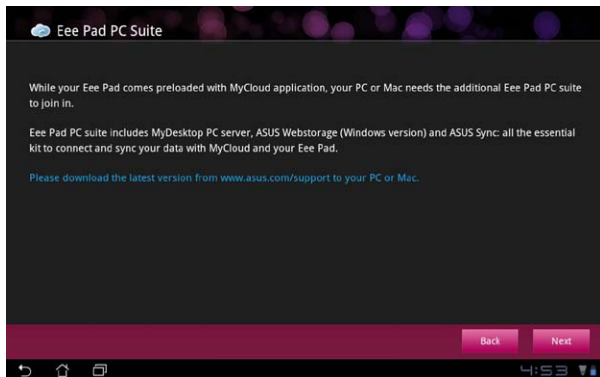
**MyCloud** consists of **My Content**, **My Desktop**, and **@Vibe**. It is a total solution for you to access and obtain your cloud content.

Launching MyCloud:

1. Tap on **MyCloud** on the **Apps Menu**.
2. Click **Next** to continue.



3. MyCloud needs to work with **ASUS Pad PC Suite** to avail its full function. Download and install ASUS Pad PC Suite from the ASUS support site at [support.asus.com](http://support.asus.com) to your PC. Click **Next** to continue.



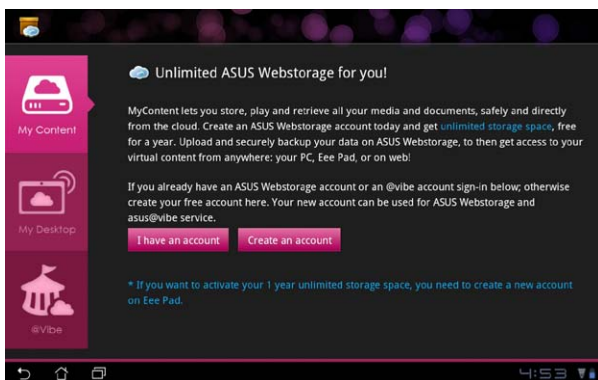


## My Content

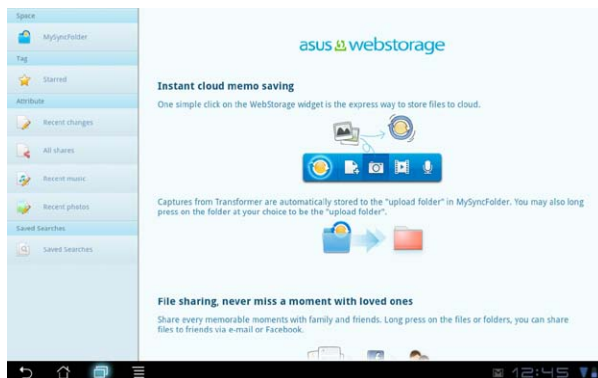
**My Content** allows you to access your personal data in the Webstorage and conveniently categorize your cloud data into **Music** for the audio files, **Gallery** for image and video files, and **Others**.

To access MyContent:

1. Tap **I have an account** to sign in or tap **Create an account** to create your free account.



2. After signing in, you will see all your data stored in ASUS Webstorage. Locate your data according to its category.



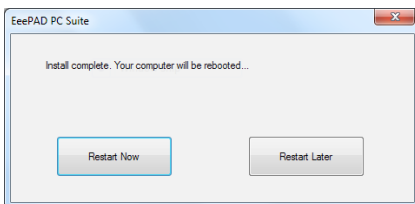
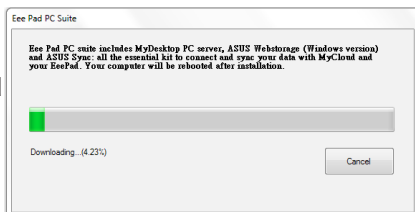
## My Desktop

**My Desktop** allows you to remotely control your other PC from your Transformer.

You will need to download **ASUS Pad PC Suite** to your PC first to enable My Desktop on your Transformer.

To install and set up Transformer PC Suite (on PC):

1. Ensure that your PC is connected to the Internet.
2. Double-click the applicable file you downloaded from the ASUS support site.
3. Click **Restart Now** to reboot your PC.
4. Click on **GO** to configure necessary settings for My Desktop.
5. Click **Next** to continue.



6. Read the license agreement and click **Accept** to continue.



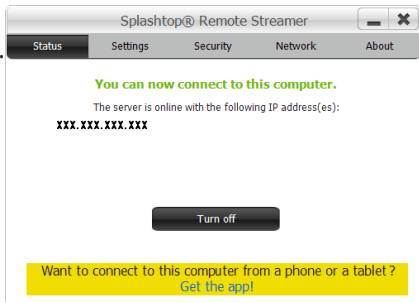
7. Create a password and click **Next**.



8. Click **Enjoy Now** to continue.

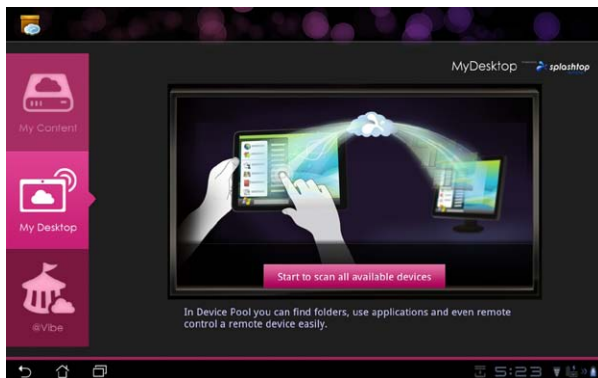


9. Copy the IP address of your PC for later use on your Transformer.

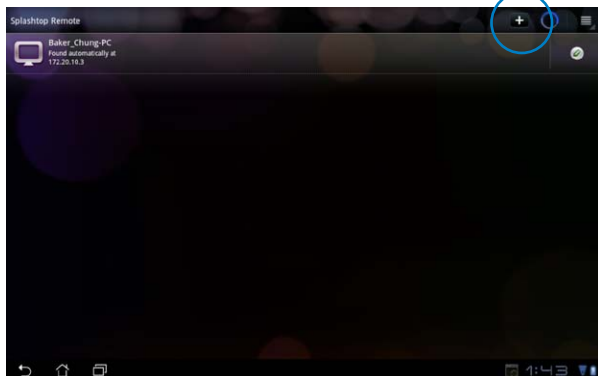


## Pairing the Transformer and PC (on Transformer):

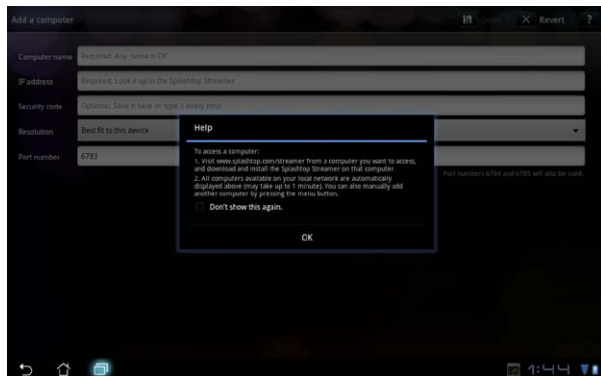
1. Ensure that your Transformer and the PC are connected to the same wireless access point (AP). Access **My Desktop**.
2. Tap the screen to scan the available devices.



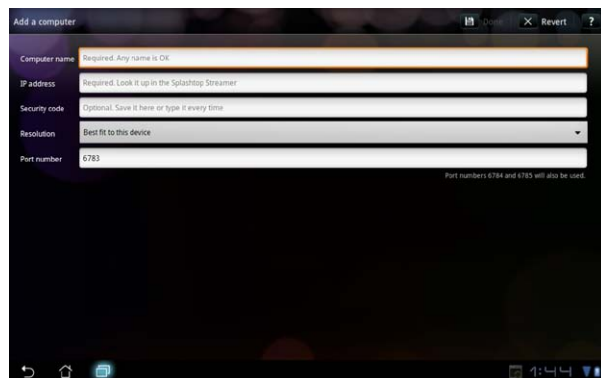
3. Tap on the plus sign (+) on the top right corner to add your client PC.



4. Tap on **OK** to continue.



5. Manually enter all the information of your client PC, including the IP address and the password paired with your PC and tap **Done** to add the client.

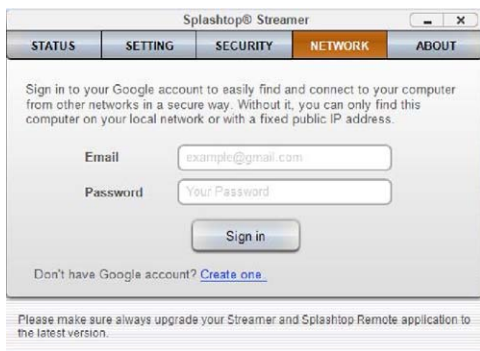


The devices must be connected to the same wireless access point (AP) while enabling My Desktop. Accordingly, My Desktop will not be able to function when connecting through 3G network.

## Setting up Internet Discovery for My Desktop

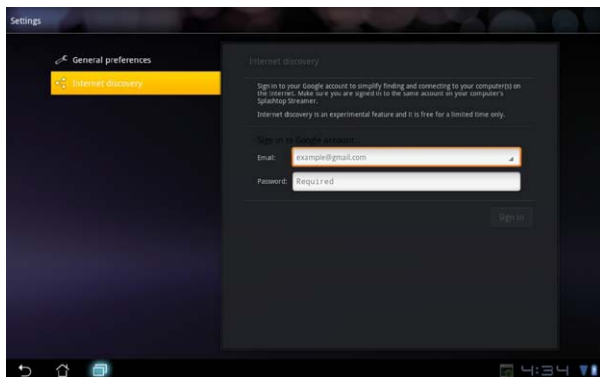
On your PC:

1. Download and activate **Splashtop Streamer** from the ASUS support site.
2. Go to **Network** in Splashtop Remote Streamer.
3. Enter your Google credentials in the Email and Password fields. Then click **Sign in**.



On your Transformer:

Go to **Settings** on the upper right and enter your Google account in **Internet discovery**. Your device will automatically detect your PC.



## @Vibe

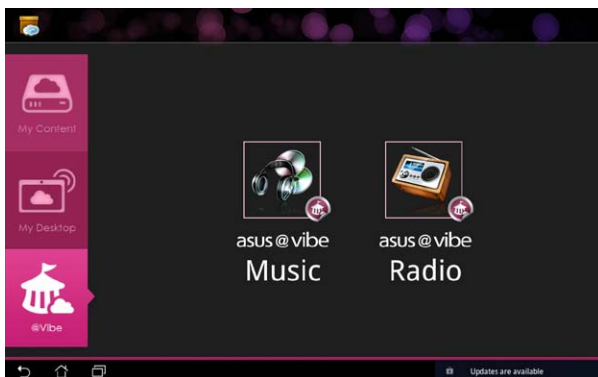
Asus@Vibe is a one-stop entertainment platform that serves as a value-added service for all ASUS products. With the Asus@Vibe platform, users can access or download a wealth of exciting and engaging digital content such as music, videos, games, magazines, and e-books. You can also tune into your favorite radio stations and stream live TV anytime and anywhere.



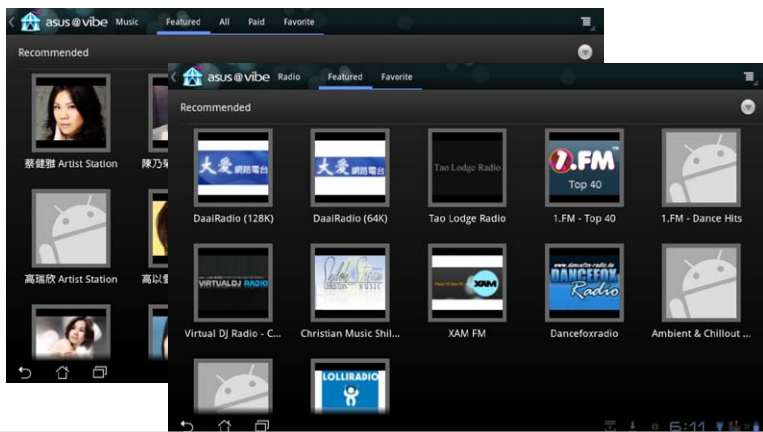
The contents supplied may vary with the country of origin.

Login with your ASUS Access account to enjoy the multimedia content at @Vibe.

1. Tap on **Apps menu** and tap **@Vibe**.
2. Login by using your account.
3. Select **Music** or **Radio**.



4. Scroll and select your desired disc or radio station.



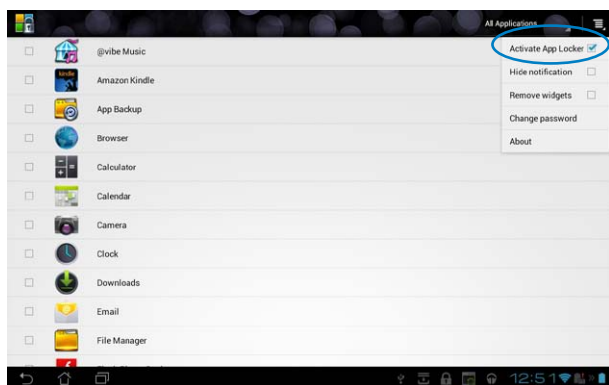
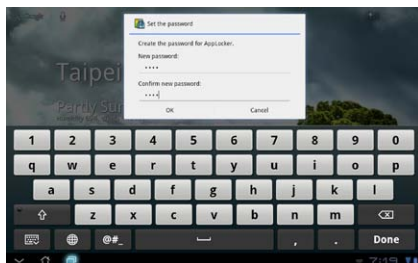
# App Locker



App Locker allows you to protect all of your apps with a password and you can change the password any time.

To use **App Locker**:

1. Tap on **App Locker** from the Apps Menu.
2. Set up your password to start using App Locker.
3. Tick the apps you would like to lock.
4. Activate App Locker from Settings on the upper right corner.



5. Lock signs will appear by the locked apps on the Home Screen.
6. You will be asked for your password every time you access the locked apps.





# App Backup



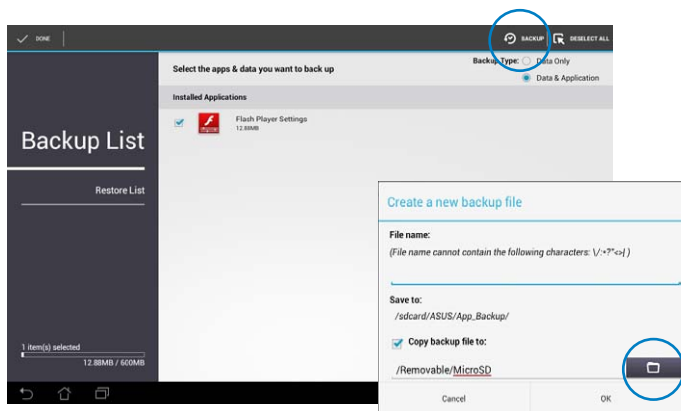
App Backup can back up your installed apps and app data on local storage and duplicate a copy to the external storage to save your backup files. App Backup can also restore your installed apps and app data after updating your device to make sure your data will not be lost.



App Backup cannot restore apps that require an account authentication. If you encounter problems, please clear data for the apps via the path: **Settings> Apps** and log in again.

To use **App Backup**:

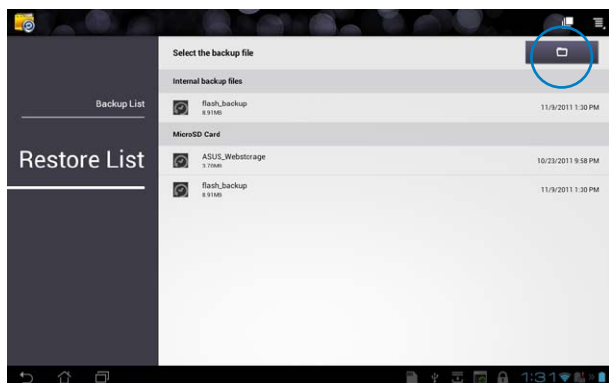
1. Tap on **App Backup** from the Apps Menu.
2. The Backup List shows the installed applications on your Transformer downloaded from the Android market. Tick on the apps you want to back up and tap on **Backup** on the upper right.
3. Insert a MicroSD card or other storage devices if necessary. Click on File Manager at the lower right of the dialog box to select the external storage location to duplicate backup app files.
4. Key in the file name of new backup file to create and select **OK**.



5. Backup files are automatically stored in **App\_Backup** folder in internal storage and selected external storage.

To use **App Restore**:

1. The Restore List instantly shows the app files stored in Backup.
2. Tap on a backup file to restore or click on Browse at the upper right to access files in the internal or external storage.

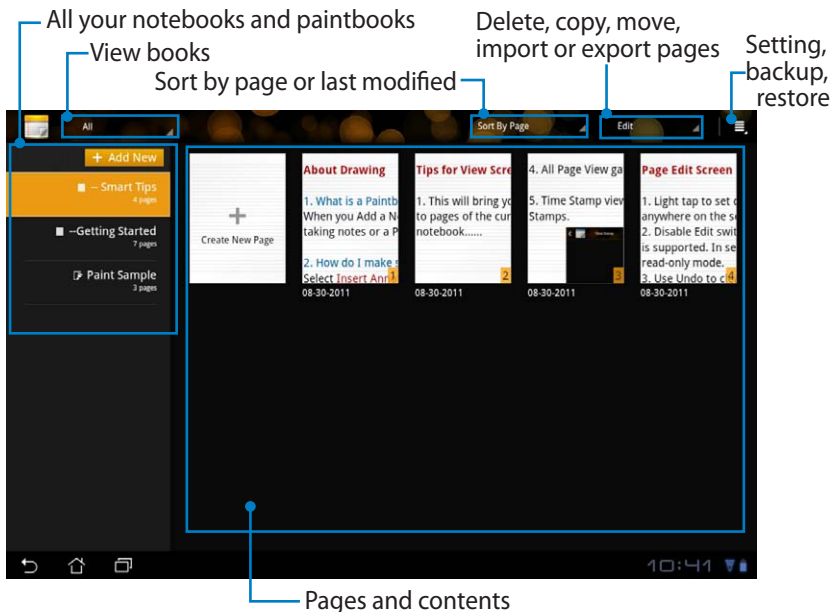


3. Enter file password to decrypt the backup file and restore contents to your Transformer.

# SuperNote



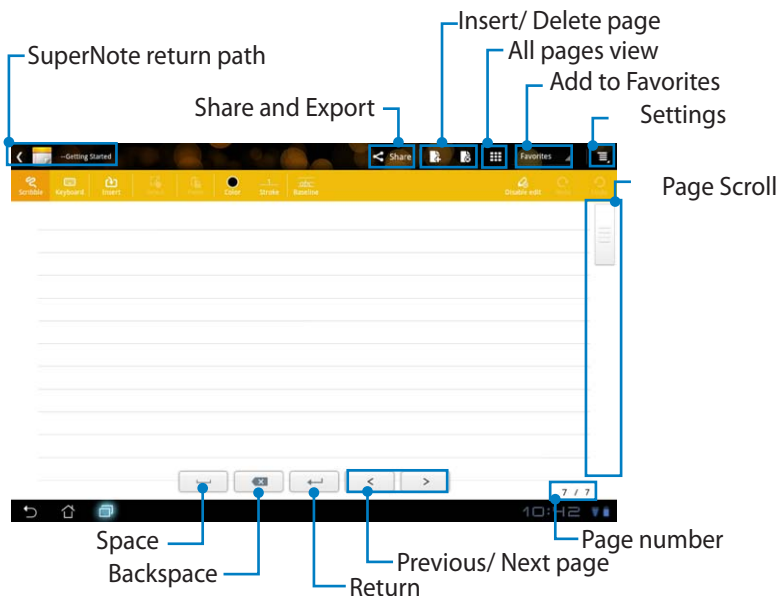
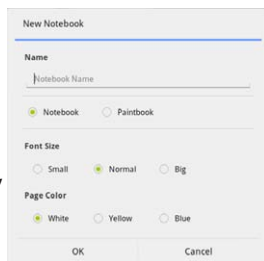
SuperNote is a convenient app used for writing and painting on your Transformer. You can take notes, send instant messages, make sketches, create e-cards with audio recordings or diaries with video, and lots more.



## Using SuperNote

To create a new notebook or paintbook:

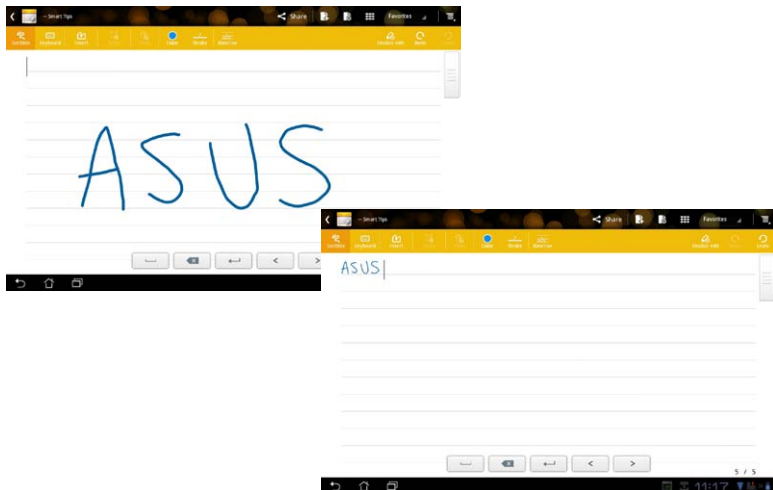
1. Tap on **+ Add New** on the left panel of the SuperNote main page.
2. Name the file and choose **Notebook** or **Paintbook**.
3. Select a font size and page background color, then tap on **OK**. The new note page appears instantly.
4. Tap on the return path on the upper left for an overall view of the books and note pages.
5. On the upper right, tap on **Share** to share by e-mail, webstorage, social networks, or online gallery.



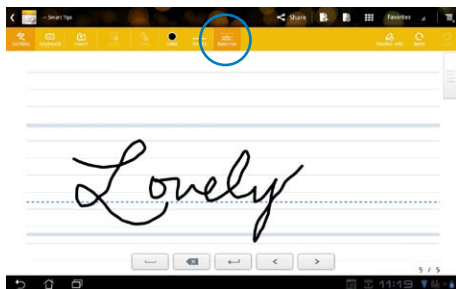
## Using the SuperNote Notebook

SuperNote Notebook is designed to allow you to scribble on the Transformer continuously regardless of page lines. The app will automatically adjust the manuscript to fit into the page lines.

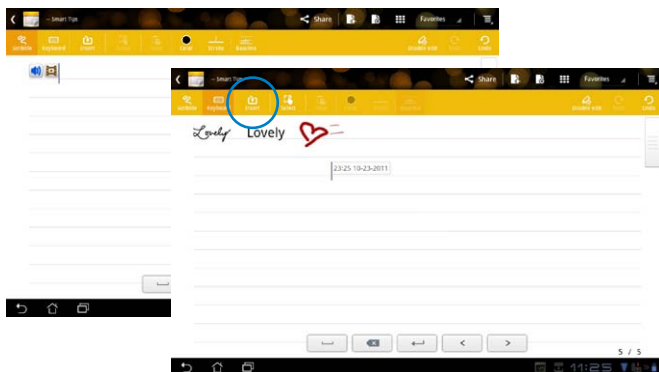
1. Choose **Scribble** mode or **Keyboard** mode to enter your notes.
2. In **Scribble** mode, select **Color** and **Stroke** weight to customize strokes.
3. Tap to set a spot for the text cursor, then scribble on the tablet. The manuscript will be automatically adjusted into the page lines.



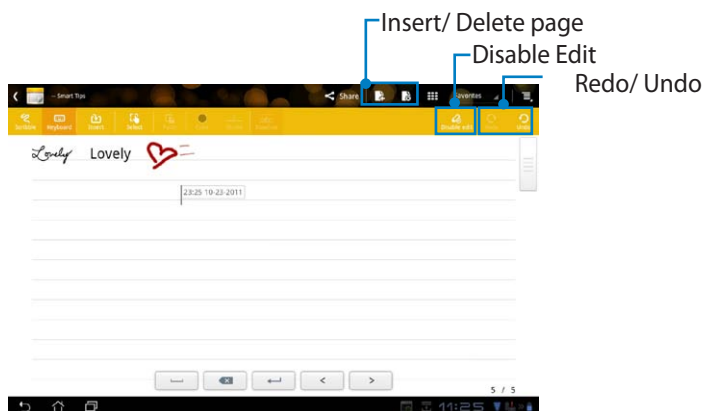
4. Tap on the **Baseline** function for penmanship guidelines, if necessary.



5. Tap on **Insert** to make annotations, create time stamps, insert photos, drawings from paintbook, picture from gallery, voice, video, or other text and picture file.



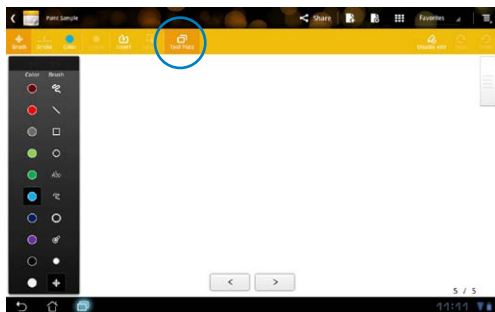
6. Insert a new page in the notebook or delete to discard unwanted pages.
7. Tap on **Disable Edit** to enable Read Only mode to view and flip through the note pages and avoid entering unnecessary marks on the pages.
8. Tap on **Undo** to delete changes. Tap **Redo** to keep the changes.
9. SuperNote automatically saves and sorts the files by date in /sdcard/supernote.



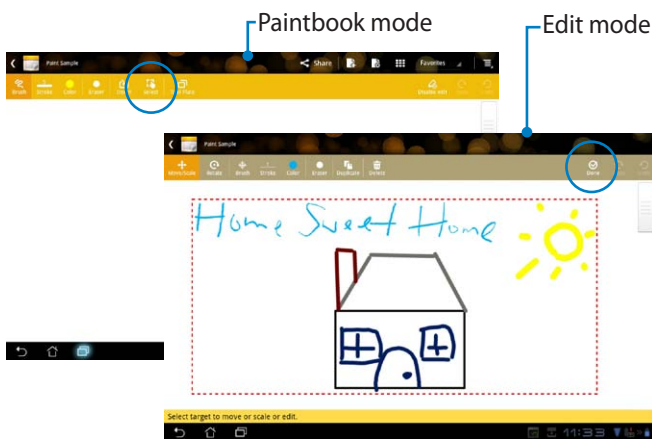
## Using the SuperNote Paintbook

SuperNote Paintbook provides an immediate interface for users to draw and save to an electronic file. The Paintbook is similar to the Notebook in structure with additional color options and brush selections for users to draw freely on a canvas.

1. Select **Brush**, **Stroke**, and **Color** to customize strokes.
2. Tap on **Tools** to display Brush and Color palettes together.



3. Once you enter the first stroke or tap on **Select**, the canvas will switch to Edit mode.
4. Tapping on **Select** enables you to move, scale, rotate, or edit the selected area. A red dotted box will appear to designate the area.
5. Tap on **Done** to return to Paintbook mode.



# ASUS Pad PC Suite (on PC)

**ASUS Pad PC Suite** consists of **My Desktop PC Server**, **ASUS Webstorage** and **ASUS Sync**. It is a package tool on your PC to co-work with your Transformer.

## My Desktop PC Server

It is a remote desktop tool that works with My Desktop on your Transformer. Refer to the section on **MyCloud** for details.

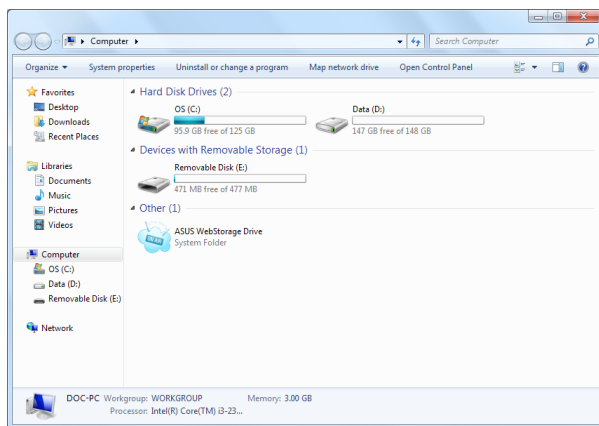
## ASUS Webstorage

It is an online storage for you to store and access your data whenever you want and wherever you are.

After installing ASUS Pad PC Suite on your PC, **ASUS Webstorage Drive** appears in **Computer**. Double-click the drive to login.



Ensure that you are connected to the Internet before accessing ASUS Webstorage Drive.



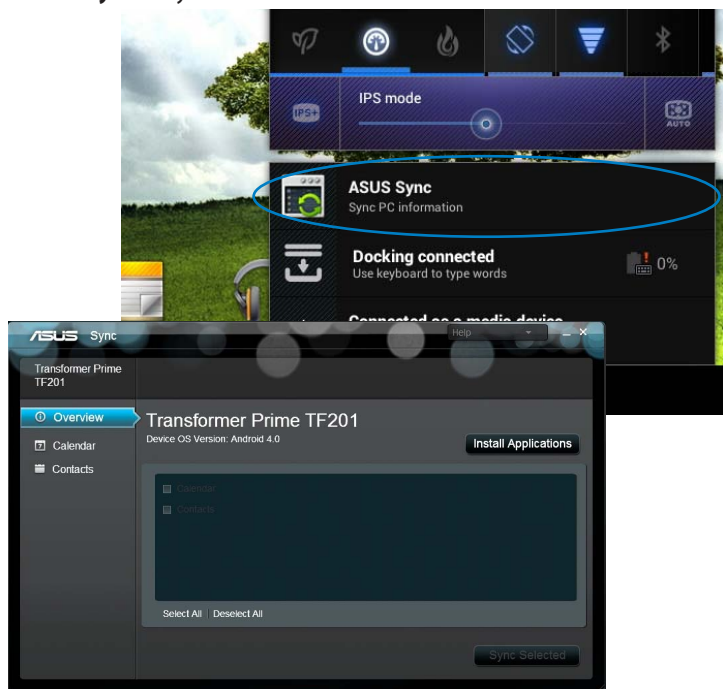


## ASUS Sync

ASUS Sync helps you synchronize the **Contacts** and **Calendar** of your Outlook on your PC with your Transformer.

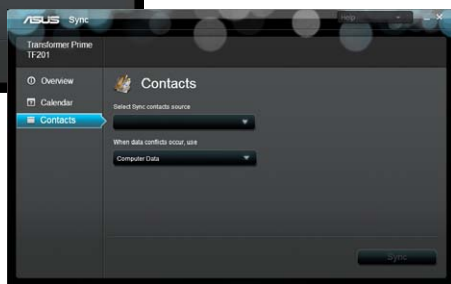
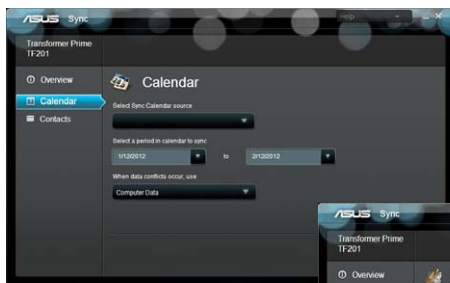
To synchronize your Transformer with your PC:

1. Connect your Transformer to the PC, with the installed ASUS Pad PC Suite.
2. Click the ASUS Sync on the bottom right corner to build the connection between your Transformer and the PC.
3. Start **ASUS Sync** on your PC.



For **Calendar** synchronization, **ASUS Sync** supports **Outlook** (2003 or later version), and **Windows Vista Calendar**. For **Contacts** synchronization, **ASUS Sync** supports **Outlook** (2003 or later version), **Outlook Express**, and **Windows Vista Contacts**.

- Click the item you want to synchronize and click **Sync Selected**, or you can click **Select All** to sync both items.
- Click **Calendar** or **Contacts** on the left for detailed configurations.



# Declarations and Safety Statements

## Federal Communications Commission Statement

This device complies with part 15 of the FCC Rules. Operation is subject to the following two conditions: (1) This device may not cause harmful interference, and (2) this device must accept any interference received, including interference that may cause undesired operation.

This device has been tested and found to comply with the limits for a Class B digital device, pursuant to Part 15 of the FCC Rules. These limits are designed to provide reasonable protection against harmful interference in a residential installation. This equipment generates, uses and can radiate radio frequency energy and, if not installed and used in accordance with the instructions, may cause harmful interference to radio communications. However, there is no guarantee that interference will not occur in a particular installation. If this equipment does cause harmful interference to radio or television reception, which can be determined by turning the equipment off and on, the user is encouraged to try to correct the interference by one or more of the following measures:

- Reorient or relocate the receiving antenna.
- Increase the separation between the equipment and receiver.
- Connect the equipment into an outlet on a circuit different from that to which the receiver is connected.
- Consult the dealer or an experienced radio/TV technician for help.

Changes or modifications not expressly approved by the party responsible for compliance could void the user's authority to operate the equipment.

The antenna(s) used for this transmitter must not be co-located or operating in conjunction with any other antenna or transmitter.

## RF Exposure Information (SAR)

This device meets the government's requirements for exposure to radio waves. This device is designed and manufactured not to exceed the emission limits for exposure to radio frequency (RF) energy set by the Federal Communications Commission of the U.S. Government.

The exposure standard employs a unit of measurement known as the Specific Absorption Rate, or SAR. The SAR limit set by the FCC is 1.6W/kg. Tests for SAR are conducted using standard operating positions accepted by the FCC with the EUT transmitting at the specified power level in different channels.

The highest SAR value for the device as reported to the FCC is 0.387 W/kg when placed next to the body.

The FCC has granted an Equipment Authorization for this device with all reported SAR levels evaluated as in compliance with the FCC RF exposure guidelines. SAR information on this device is on file with the FCC and can be found under the Display Grant section of [www.fcc.gov/oet/ea/fccid](http://www.fcc.gov/oet/ea/fccid) after searching on FCC ID: MSQTF201.

This device is compliance with SAR for general population /uncontrolled exposure limits in ANSI/IEEE C95.1-1999 and had been tested in accordance with the measurement methods and procedures specified in OET Bulletin 65 Supplement C.

## **IC Regulations**

This device complies with Industry Canada licence-exempt RSS standard(s). Operation is subject to the following two conditions: (1) this device may not cause interference, and (2) this device must accept any interference, including interference that may cause undesired operation of the device.

This Class B digital apparatus complies with Canadian ICES-003.

Cet appareil numérique de la classe B est conforme à la norme NMB-003 du Canada.

This Category II radiocommunication device complies with Industry Canada Standard RSS-310.

Ce dispositif de radiocommunication de catégorie II respecte la norme CNR-310 d'Industrie Canada.

## **IC Radiation Exposure Statement**

This EUT is compliance with SAR for general population/uncontrolled exposure limits in IC RSS-102 and had been tested in accordance with the measurement methods and procedures specified in IEEE 1528. This equipment should be installed and operated with minimum distance 0cm between the radiator & your body.

This device and its antenna(s) must not be co-located or operating in conjunction with any other antenna or transmitter.

The County Code Selection feature is disabled for products marketed in the US/Canada.

For product available in the USA/ Canada markets, only channel 1~11 can be operated. Selection of other channels is not possible.

## CE Mark Warning



### CE marking for devices without wireless LAN/Bluetooth

The shipped version of this device complies with the requirements of the EEC directives 2004/108/EC "Electromagnetic compatibility" and 2006/95/EC "Low voltage directive".



### CE marking for devices with wireless LAN/ Bluetooth

This equipment complies with the requirements of Directive 1999/5/EC of the European Parliament and Commission from 9 March, 1999 governing Radio and Telecommunications Equipment and mutual recognition of conformity.

## Power Safety Requirement

Products with electrical current ratings up to 6A and weighing more than 3Kg must use approved power cords greater than or equal to: H05VV-F, 3G, 0.75mm<sup>2</sup> or H05VV-F, 2G, 0.75mm<sup>2</sup>.

## ASUS Recycling/Takeback Services

ASUS recycling and takeback programs come from our commitment to the highest standards for protecting our environment. We believe in providing solutions for you to be able to responsibly recycle our products, batteries, other components as well as the packaging materials. Please go to <http://csr.asus.com/english/Takeback.htm> for detailed recycling information in different regions.



**Risk of Explosion if Battery is Replaced by an Incorrect Type.  
Dispose of Used Batteries According to the Instructions.**



DO NOT throw the battery in municipal waste. The symbol of the crossed out wheeled bin indicates that the battery should not be placed in municipal waste.



DO NOT throw the Transformer in municipal waste. This product has been designed to enable proper reuse of parts and recycling. The symbol of the crossed out wheeled bin indicates that the product (electrical, electronic equipment and mercury-containing button cell battery) should not be placed in municipal waste. Check local regulations for disposal of electronic products.



**SAFE TEMP:** This Transformer should only be used in environments with ambient temperatures between 0°C (32°F) and 35°C (95°F).



Tuxera software provides support for NTFS format.



The weather information is provided by AccuWeather.com®.



The iFont font format adopted in this product is developed by Arphic.



Adobe® Flash® Player support+

+Flash Player 10.2 is now available for download on Android Market. This is a production GA (General Availability) release for Android 2.2 (Froyo) and 2.3 (Gingerbread) devices and an initial beta release for Android 3.x (Honeycomb) tablets that include at least Google's 3.0.1 system update.

For more details, please visit <http://blogs.adobe.com/flashplayer/>.



---

Download the latest Adobe Flash Player version 11.1.112.60 for ICS devices.

---

# Copyright Information

No part of this manual, including the products and software described in it, may be reproduced, transmitted, transcribed, stored in a retrieval system, or transcribed into any language in any form or by any means, except documentation kept by the purchaser for backup purposes, without the express written permission of ASUSTeK COMPUTER INC. ("ASUS").

ASUS and Transformer logo are trademarks of ASUSTek Computer Inc. Information in this document is subject to change without notice.

**Copyright © 2012 ASUSTeK COMPUTER INC. All Rights Reserved.**

## Limitation of Liability

Circumstances may arise where because of a default on ASUS' part or other liability, you are entitled to recover damages from ASUS. In each such instance, regardless of the basis on which you are entitled to claim damages from ASUS, ASUS is liable for no more than damages for bodily injury (including death) and damage to real property and tangible personal property; or any other actual and direct damages resulted from omission or failure of performing legal duties under this Warranty Statement, up to the listed contract price of each product.

ASUS will only be responsible for or indemnify you for loss, damages or claims based in contract, tort or infringement under this Warranty Statement.

This limit also applies to ASUS' suppliers and its reseller. It is the maximum for which ASUS, its suppliers, and your reseller are collectively responsible.

UNDER NO CIRCUMSTANCES IS ASUS LIABLE FOR ANY OF THE FOLLOWING: (1) THIRD-PARTY CLAIMS AGAINST YOU FOR DAMAGES; (2) LOSS OF, OR DAMAGE TO, YOUR RECORDS OR DATA; OR (3) SPECIAL, INCIDENTAL, OR INDIRECT DAMAGES OR FOR ANY ECONOMIC CONSEQUENTIAL DAMAGES (INCLUDING LOST PROFITS OR SAVINGS), EVEN IF ASUS, ITS SUPPLIERS OR YOUR RESELLER IS INFORMED OF THEIR POSSIBILITY.

Manufacturer	ASUSTek COMPUTER INC.
Address, City	No. 150, LI-TE RD., PEITOU, TAIPEI 112, TAIWAN R.O.C
Country	TAIWAN
Authorized Representative in Europe	ASUS COMPUTER GmbH
Address, City	HARKORT STR. 21-23, 40880 RATINGEN
Country	GERMANY

