

ASUS All-in-One PC

User Guide



ET223 and ET203 Series

COPYRIGHT INFORMATION

No part of this manual, including the products and software described in it, may be reproduced, transmitted, transcribed, stored in a retrieval system, or translated into any language in any form or by any means, except documentation kept by the purchaser for backup purposes, without the express written permission of ASUSTeK COMPUTER INC. ("ASUS").

ASUS PROVIDES THIS MANUAL "AS IS" WITHOUT WARRANTY OF ANY KIND, EITHER EXPRESS OR IMPLIED, INCLUDING BUT NOT LIMITED TO THE IMPLIED WARRANTIES OR CONDITIONS OF MERCHANTABILITY OR FITNESS FOR A PARTICULAR PURPOSE. IN NO EVENT SHALL ASUS, ITS DIRECTORS, OFFICERS, EMPLOYEES OR AGENTS BE LIABLE FOR ANY INDIRECT, SPECIAL, INCIDENTAL, OR CONSEQUENTIAL DAMAGES (INCLUDING DAMAGES FOR LOSS OF PROFITS, LOSS OF BUSINESS, LOSS OF USE OR DATA, INTERRUPTION OF BUSINESS AND THE LIKE), EVEN IF ASUS HAS BEEN ADVISED OF THE POSSIBILITY OF SUCH DAMAGES ARISING FROM ANY DEFECT OR ERROR IN THIS MANUAL OR PRODUCT.

Products and corporate names appearing in this manual may or may not be registered trademarks or copyrights of their respective companies, and are used only for identification or explanation and to the owners' benefit, without intent to infringe.

SPECIFICATIONS AND INFORMATION CONTAINED IN THIS MANUAL ARE FURNISHED FOR INFORMATIONAL USE ONLY, AND ARE SUBJECT TO CHANGE AT ANY TIME WITHOUT NOTICE, AND SHOULD NOT BE CONSTRUED AS A COMMITMENT BY ASUS. ASUS ASSUMES NO RESPONSIBILITY OR LIABILITY FOR ANY ERRORS OR INACCURACIES THAT MAY APPEAR IN THIS MANUAL, INCLUDING THE PRODUCTS AND SOFTWARE DESCRIBED IN IT.

Copyright © 2014 ASUSTeK COMPUTER INC. All Rights Reserved.

LIMITATION OF LIABILITY

Circumstances may arise where because of a default on ASUS' part or other liability, you are entitled to recover damages from ASUS. In each such instance, regardless of the basis on which you are entitled to claim damages from ASUS, ASUS is liable for no more than damages for bodily injury (including death) and damage to real property and tangible personal property; or any other actual and direct damages resulted from omission or failure of performing legal duties under this Warranty Statement, up to the listed contract price of each product.

ASUS will only be responsible for or indemnify you for loss, damages or claims based in contract, tort or infringement under this Warranty Statement.

This limit also applies to ASUS' suppliers and its reseller. It is the maximum for which ASUS, its suppliers, and your reseller are collectively responsible.

UNDER NO CIRCUMSTANCES IS ASUS LIABLE FOR ANY OF THE FOLLOWING: (1) THIRD-PARTY CLAIMS AGAINST YOU FOR DAMAGES; (2) LOSS OF, OR DAMAGE TO, YOUR RECORDS OR DATA; OR (3) SPECIAL, INCIDENTAL, OR INDIRECT DAMAGES OR FOR ANY ECONOMIC CONSEQUENTIAL DAMAGES (INCLUDING LOST PROFITS OR SAVINGS), EVEN IF ASUS, ITS SUPPLIERS OR YOUR RESELLER IS INFORMED OF THEIR POSSIBILITY.

SERVICE AND SUPPORT

Visit our multi-language web site at <http://support.asus.com>

Contents

About this manual.....	6
Conventions used in this manual	7
Typography.....	7
Icons	8
Safety information.....	9
Setting up your system.....	9
Care during use	9
Sound Pressure Warning.....	11
Adapter.....	11
DC Fan Warning.....	11
Package contents	12

Chapter 1: Hardware Setup

Getting to know your ASUS All-in-One PC	13
Front view.....	13
Rear view	15
Side view	18

Chapter 2: Using your ASUS All-in-One PC

Assembling the base	21
Positioning your ASUS All-in-One PC	22
Connecting a wired keyboard and mouse	23
Connecting a wireless keyboard and mouse (optional).....	24
Powering on your ASUS All-in-One PC.....	25
Using the touch screen (optional).....	26
Using touch screen panel gestures	27

Chapter 3: Working with Windows® 8.1

Starting for the first time.....	31
Windows® UI	32
Start screen	32
Start button	36
Customizing your Start screen.....	38
Working with Windows® apps	39
Launching apps.....	39
Customizing apps.....	40
Accessing the Apps screen.....	42
Charms bar	44
Snap feature	46
Other keyboard shortcuts	48
Setting up a secondary display via the HDMI-output port	50
Connecting to the Internet	52
Setting up a Wi-Fi connection in Windows® 8.1	52
Configuring your Wi-Fi bandwidth	53
Wired connection.....	54
Turning your ASUS All-in-One PC off.....	56

Chapter 4: Recovering your system

Entering the BIOS Setup.....	57
Quickly enter the BIOS.....	57
Recovering your system.....	58
Resetting your PC	58
Recovering from a system image file	59
Removing everything and reinstalling Windows.....	60

Chapter 5: Upgrading your ASUS All-in-One PC

Installing a Random-access Memory module	61
--	----

Appendices

Notices.....	65
Federal Communication Commission Interference Statement	65
RF exposure warning.....	66
Canadian Department of Communications Statement.....	67
IC Radiation Exposure Statement for Canada	67
Canada, Industry Canada (IC) Notices	67
Radio Frequency (RF) Exposure Information	68
Canada, avis d'Industry Canada (IC)	68
Informations concernant l'exposition aux frequences radio (RF)	68
India RoHS.....	68
Declaration of Conformity (R&TTE directive 1999/5/EC).....	69
Wireless Operation Channel for Different Domains.....	69
CE Mark Warning.....	70
CE marking for devices without wireless LAN/Bluetooth	70
CE marking for devices with wireless LAN/ Bluetooth	70
REACH	72
Global Environmental Regulation Compliance and Declaration	72
ASUS Recycling/Takeback Services.....	72
Coating Notice	73
Prevention of Hearing Loss	73
TV tuner.....	73
ENERGY STAR complied product	74

About this manual

This manual provides information about the hardware and software features of your ASUS All-in-One PC, organized through the following chapters:

Chapter 1: Hardware Setup

This chapter details the hardware components of your ASUS All-in-One PC.

Chapter 2: Using your ASUS All-in-One PC

This chapter provides you with information on using your ASUS All-in-One PC.

Chapter 3: Working with Windows® 8.1

This chapter provides an overview of using Windows® 8.1 in your ASUS All-in-One PC.

Chapter 4: Recovering your system

This chapter provides recovery options for your ASUS All-in-One PC.

Chapter 5: Upgrading your ASUS All-in-One PC

This chapter guides you through the process of replacing and upgrading parts of your All-in-One PC.

Appendices

This section includes notices and safety statements for your ASUS All-in-One PC.

Conventions used in this manual

To highlight key information in this manual, some texts are presented as follows:

IMPORTANT! This message contains vital information that must be followed to complete a task.

NOTE: This message contains additional information and tips that can help complete tasks.

WARNING! This message contains important information that must be followed to keep you safe while performing tasks and prevent damage to your device's data and components.

Typography

Bold = This indicates a menu or an item that must be selected.

Italic = This indicates sections that you can refer to in this manual.

Icons

The icons below indicate the devices you can use for completing a series of tasks or procedures on your ASUS All-in-One PC.



= (optional) Use the touch screen panel.



= (optional) Use the wired/wireless mouse.



= (optional) Use the wired/wireless keyboard.

All illustrations and screenshots in this manual are for reference only. Actual product specifications and software screen images may vary with territories. Visit the ASUS website at www.asus.com for the latest information.

Safety information

Your All-in-One ASUS All-in-One PC is designed and tested to meet the latest standards of safety for information technology equipment. However, to ensure your safety, it is important that you read the following safety instructions.

Setting up your system

- Read and follow all instructions in the documentation before you operate your system.
- Do not use this product near water or a heated source such as a radiator.
- Set up the system on a stable surface.
- Openings on the chassis are for ventilation. Do not block or cover these openings. Ensure that you leave plenty of space around the system for ventilation. Never insert objects of any kind into the ventilation openings.
- Use this product in environments with ambient temperatures between 0°C and 40°C.
- If you use an extension cord, ensure that the total ampere rating of the devices plugged into the extension cord does not exceed its ampere rating.

Care during use

- Do not walk on the power cord or allow anything to rest on it.
- Do not spill water or any other liquids on your system.
- When the system is turned off, a small amount of electrical current still remains in the product. Always unplug all power, modem, and network cables from the power outlets before cleaning the system.

- The touch screen (on selected models) requires periodic cleaning to perform at optimal touch sensitivity. Keep the screen clean from foreign objects or excessive dust accumulation. To clean the screen:
 - Turn off the system and disconnect the power cord from the wall.
 - Spray a small amount of household glass cleaner on the supplied cleaning cloth and gently wipe the surface of the screen.
 - Do not spray the cleaner directly on the screen.
- Do not use an abrasive cleaner or a coarse cloth when cleaning the screen.
- If you encounter the following technical problems with the product, unplug the power cord and contact a qualified service technician or your retailer.
 - The power cord or plug is damaged.
 - Liquid has been spilled into the system.
 - The system does not function properly even if you follow the operating instructions.
 - The system was dropped or the cabinet is damaged.
 - The system performance changes.

Sound Pressure Warning

Excessive sound pressure from earphones or headphones can cause hearing loss or permanent damage to hearing. Increasing the volume and equalizer beyond default levels increases the output voltage and sound pressure produced by the earphones or headphones.

Adapter

1. Adapter specifications
 - Input voltage: 100–240Vac
 - Input frequency: 50–60Hz
 - Rating output voltage: 19Vdc
2. It is recommended that the power socket is in close proximity to the ASUS All-in-One PC.

DC Fan Warning

Please note that the DC fan is a moving part and can cause harm when used improperly. Keep away from the fan when using the product.

Package contents



ASUS All-in-One PC



AC adapter



Power cord



Warranty card



Keyboard (optional)



Mouse (optional)



Quick Start Guide



TV connector (optional)



Remote control
(optional)



KBM USB receiver
dongle (optional)

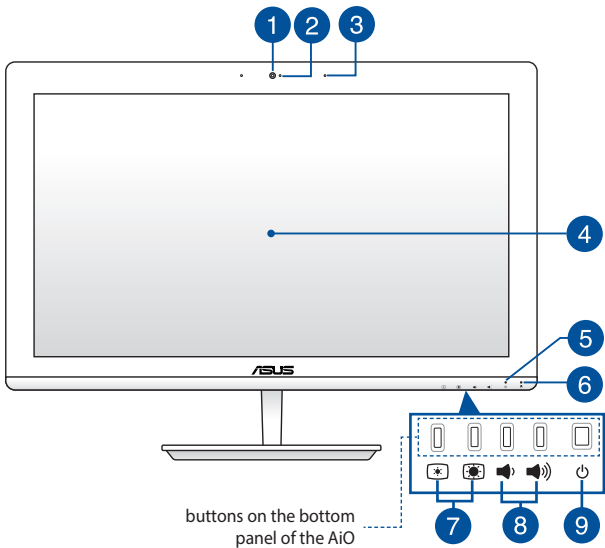
NOTES:

- If any of the items is damaged or missing, contact your retailer.
 - The keyboard, mouse, and power supply illustrations are for reference only. Actual product specifications may vary with territories.
-

Chapter 1: Hardware Setup

Getting to know your ASUS All-in-One PC

Front view



1

Camera

The built-in camera allows you to take pictures or record videos using your ASUS All-in-One PC.

2 Camera indicator
The camera indicator lights up when the built-in camera is in use.

3 Microphone
The built-in microphone can be used for video conferencing, voice narrations, audio recordings, and multimedia applications.

4 LCD display panel
The LCD display panel provides excellent viewing features for photos, videos, and other multimedia files.

On selected models, multi-touch is supported. You can operate your ASUS All-in-One PC using touch gestures.

5 Power indicator
This LED power indicator lights up when the ASUS All-in-One PC is turned on or on sleep mode.

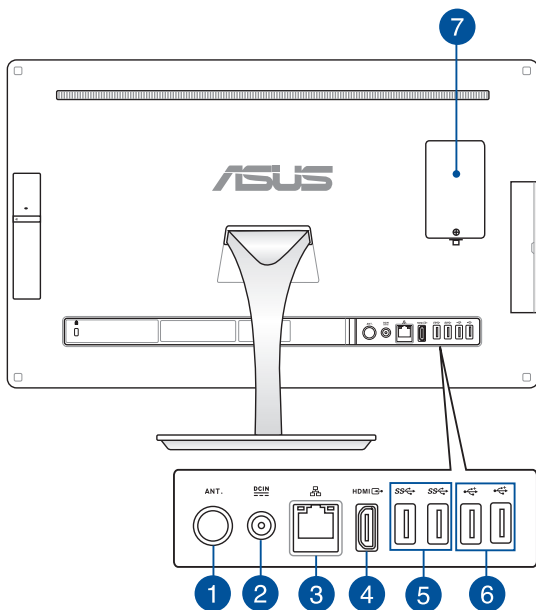
6 Hard Disk Drive (HDD) indicator
This LED indicates hard disk drive activity.

7 Brightness adjust
These buttons allows you to adjust the brightness or contrast settings.

8 Volume adjust
These buttons allows you to adjust the system volume.

9 Power button
Press this button to your All-in-One PC on or off.

Rear view



1



Antenna input (optional)

The antenna input is for TV frequency signal and allows for use from subscription television services. The provided antenna can receive digital TV.

2



Power input

The bundled power adapter converts AC power to DC power for use with this jack. Power supplied through this jack supplies power to the ASUS All-in-One PC. To prevent damage to the ASUS All-in-One PC, always use the bundled power adapter.

WARNING! The power adapter may become warm or hot when in use. Do not cover the adapter and keep it away from your body.

3



LAN port

This 8-pin RJ-45 LAN port supports a standard Ethernet cable for connection to a local network.

4



HDMI output port

Connect this port with devices equipped with an HDMI input port, such as an LCD monitor or projector.

5  **USB 3.0 ports**

These Universal Serial Bus 3.0 (USB 3.0) ports connect to USB 3.0 devices such as a mouse, printer, scanner, camera, and others.

6  **USB 2.0 ports**

These USB (Universal Serial Bus) ports are compatible with USB 2.0 or USB 1.1 devices such as keyboards, pointing devices, flash disk drives, external HDDs, speakers, cameras, and printers.

IMPORTANT! The two (2) USB 2.0 ports are available on ET203 Series models only.

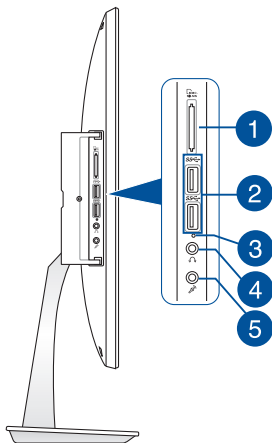
7 **Random-access memory module (RAM) compartment**

This compartment secures the RAM (random-access memory) module of your All-in-One PC.

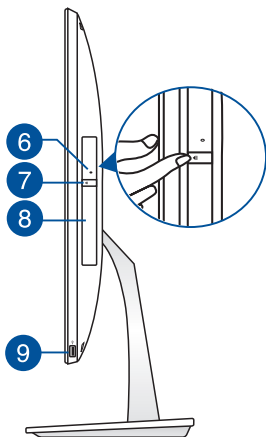
IMPORTANT! For more information on how to add or upgrade the RAM module, refer to the **Installing a Random-access Memory module** section.

Side view

Left side view



Right side view



1 Memory card reader

This ASUS All-in-One PC has a built-in memory card reader slot that supports MMC, SD, SDHC, SDXC cards.

2 USB 3.0 ports

These Universal Serial Bus 3.0 (USB 3.0) ports connect to USB 3.0 devices such as a mouse, printer, scanner, camera, and others.

The lower port supports **AI Charger II**.

3 **AI Charger II LED indicator**

This LED lights up when the AI Charger II port is in use.

4 **Headphone output port**

This port allows you to connect your ASUS All-in-One PC to amplified speakers or headphones.

5 **Microphone input combo port**

This port allows you to connect your ASUS All-in-One PC to an external microphone.

6 **Optical Disc Drive manual eject hole**

The manual eject hole is used to eject the drive tray in case the electronic eject button does not work.

WARNING! Use the manual eject hole only when the electronic eject button does not work.

7 **Optical Disk Drive electronic eject button**

Press this button to eject the optical drive tray.

You can also eject the drive tray using your media player or by right-clicking the optical drive icon in Windows File Explorer and clicking Eject.

8

Optical Drive (on selected models)

This support compact discs (CD), digital video discs (DVD), and/or Blu-ray discs (BD), and recordable (R) or re-writable (RW) discs. Consult product specifications for details on included optical drive.

NOTE: DVD R/RW is optional and is available on selected models only.

9



USB 2.0 port

This USB (Universal Serial Bus) ports are compatible with USB 2.0 or USB 1.1 devices such as keyboards, pointing devices, flash disk drives, external HDDs, speakers, cameras, and printers.

NOTES:

- Use this port if the cable of your mouse or keyboard is not long enough to be connected on the rear USB 2.0 port.
 - This port is available on ET223 Series models only.
-

Chapter 2: Using your ASUS All-in-One PC

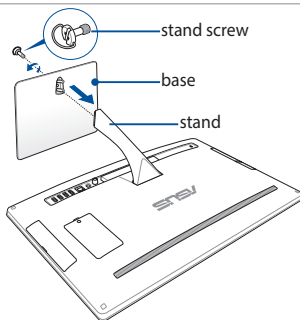
Assembling the base

1. Place the ASUS All-in-One PC on a flat and stable surface such as a table or desk.
2. Align and attach the base to the stand. Ensure that the stand is fitted firmly and aligned properly to the base.

NOTE: The stand fits to the base in one orientation only.

3. Secure the base to the stand with the bundled stand screw.

NOTE: The bundled stand screw is tool-less by design but you can also use a Phillips or a flat screwdriver, a coin, or a token to install it.

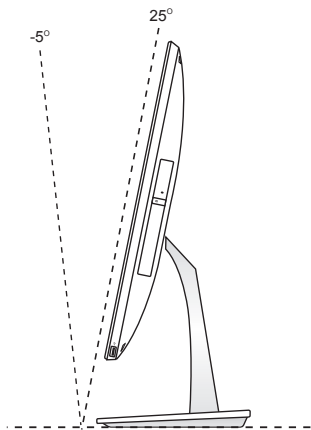


NOTE: The illustration above is for reference only. The actual All-in-One PC may slightly vary depending on the model but the installation steps remains the same.

Positioning your ASUS All-in-One PC

1. Place your ASUS All-in-One PC on a flat surface such as a table or desk.
2. Tilt the display to an angle between -5° to 25° .

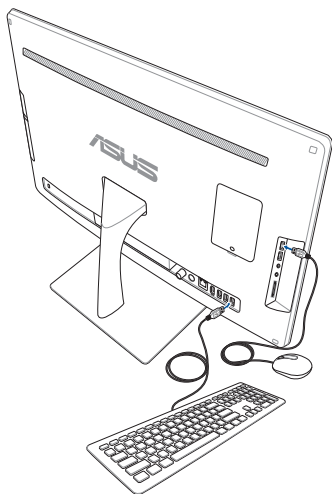
IMPORTANT! Avoid adjusting the display to an angle beyond the recommended values or you may risk damaging the ASUS All-in-One PC.



Connecting a wired keyboard and mouse

Connect the keyboard and the mouse to the USB ports on the rear or side panel.

NOTE: To fully maximize your AiO PC's AI Charger II feature, we recommend to use the upper USB 3.0 port on the side panel for wired keyboard or mouse. Use the lower USB 3.0 port to charge smart devices or MP3 players.

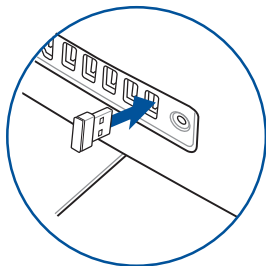


Connecting a wireless keyboard and mouse (optional)

1. Install batteries into the wireless keyboard and mouse.
2. Connect the wireless dongle for keyboard and mouse to a USB port on the rear or on the side panel.

NOTE: We recommend to use the USB 2.0 port for keyboard and mouse.

3. You can begin using the wireless keyboard and mouse.

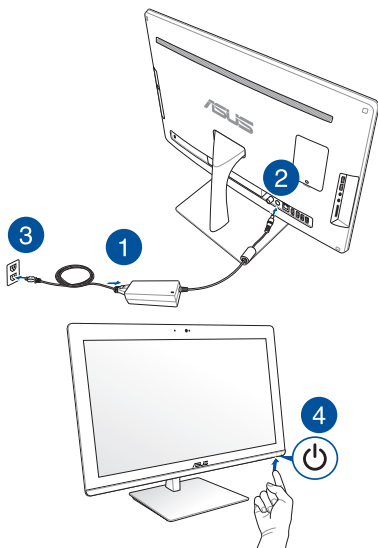


NOTES:

- Reconnect the wireless keyboard and mouse with the wireless dongle if they lose connection. Avoid using either devices alongside other wireless devices. Position the mouse and keyboard at least 20 cm away from other wireless hardware to avoid interference.
 - The illustrations above are for reference only. Actual hardware and specifications of the optional wired or wireless keyboard and mouse may vary.
-

Powering on your ASUS All-in-One PC

Connect the supplied AC adapter to the **DC IN** jack on the rear panel (1, 2, and 3) and then press the **Power button** on the front panel (4) of the ASUS All-in-One PC to power on the system.

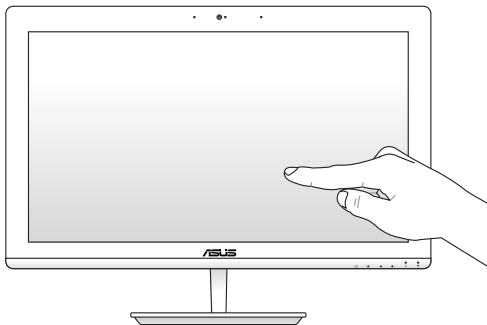


WARNING! DO NOT connect the AC power cord to an AC outlet prior to connecting the DC plug to the system. Doing so may damage the AC-DC adapter.

NOTE: For details on turning off your ASUS All-in-One PC, refer to the section **Turning your ASUS All-in-One PC off in Working with Windows® 8.1.**

Using the touch screen (optional)

The touch screen panel of your ASUS All-in-One PC provides excellent viewing features for photos, videos, and other multimedia files on your ASUS All-in-One PC. It also supports the 10-point multi-touch feature that facilitates smoother and more accurate touch gestures allowing you to operate your ASUS All-in-One PC faster and easier.



Using touch screen panel gestures

NOTE: The following screenshots are for reference only. The touch screen panel's appearance may vary depending on model.

The gestures allow you to launch programs and access the settings of your ASUS All-in-One PC. The functions can be activated by using the hand gestures to your ASUS All-in-One PC's touch screen panel.

Left edge swipe



Swipe from the left edge of the screen to shuffle your running apps.

Right edge swipe



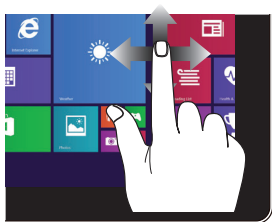
Swipe from the right edge of the screen to launch the Charms bar.

Top edge swipe



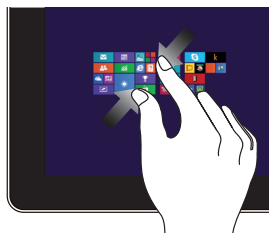
- In the Start screen, swipe from the top edge of the screen to view the Customize bar.
- In a running app, swipe from the top edge of the screen to view its menu.

Finger slide



Slide your finger to scroll up and down and slide your finger to pan the screen left or right.

Zoom out



Bring together your two fingers on the touch panel.

Zoom in



Spread apart your two fingers on the touch panel.

Tap/Double tap



- Tap an app to launch it.
- On Desktop mode, double-tap an item to launch it.

Tap/click and hold



- To move an app, tap and hold the app tile and drag it to a new location.
- To close an app, tap and hold the top side of the running app and drag it down to the bottom of the screen to close it.

Chapter 3: Working with Windows® 8.1

NOTE: The operating system varies with country or region.

Starting for the first time

When you start your computer for the first time, a series of screens appear to guide you in configuring your Windows® 8.1 operating system.

To start your ASUS All-in-One PC for the first time:

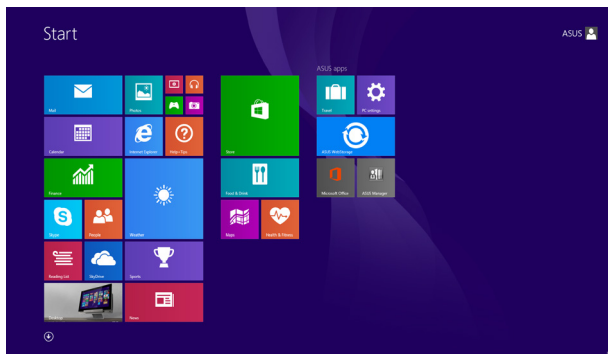
1. Press the power button on your ASUS All-in-One PC. Wait for a few minutes until the setup screen appears.
2. From the setup screen, pick your region and a language to use on your ASUS All-in-One PC.
3. Carefully read the License Terms. Select **I accept**.
4. Follow the onscreen instructions to configure the following basic items:
 - Personalize
 - Get online
 - Settings
 - Your account
5. After configuring the basic items, Windows® 8.1 proceeds to install your apps and preferred settings. Ensure that your ASUS All-in-One PC is kept powered on during the setup process.
6. Once the setup process is complete, the Start screen appears.

Windows® UI

Windows® 8.1 comes with a tile-based user interface (UI) which allows you to organize and easily access Windows® apps from the Start screen. It also includes the following features that you can use while working on your ASUS All-in-One PC.

Start screen

The Start screen appears after successfully signing in to your user account. It helps organize all the applications you need in just one place.



Windows® Apps

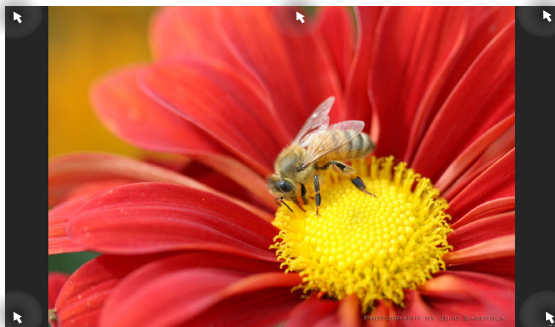
These are apps pinned on the Start screen and displayed on tiled-format for easy access.

NOTE: Some apps require signing in to your Microsoft account before they are fully launched.

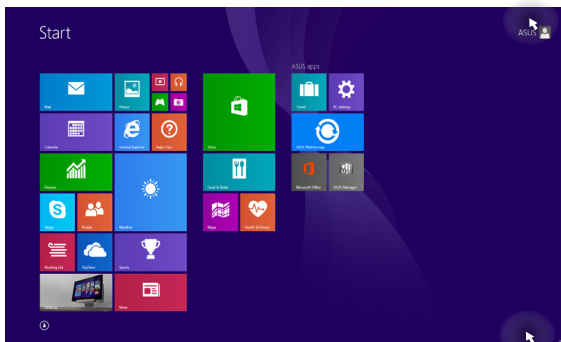
Hotspots

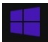

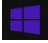
Onscreen hotspots allow you to launch programs and access the settings of your ASUS All-in-One PC. The functions in these hotspots can be activated using your mouse.

Hotspots on a running app



Hotspots on the Start screen



Hotspot	Action
upper left corner	<p>Hover your mouse pointer on the upper left corner then tap/click on the recent app's thumbnail to revert back to that running app.</p> <hr/> <p>If you launched more than one app, slide down to show all running apps.</p> <hr/>
lower left corner	<p>From a running app screen:</p> <p>Hover your mouse pointer on the lower left corner then tap/click  to go back to the Start screen.</p> <hr/> <p>NOTE: You can also press the Windows key  on your keyboard to go back to the Start screen.</p> <hr/> <p>From the Start screen:</p> <p>Hover your mouse pointer on the lower left corner then tap/click  to go back to that app.</p> <hr/>

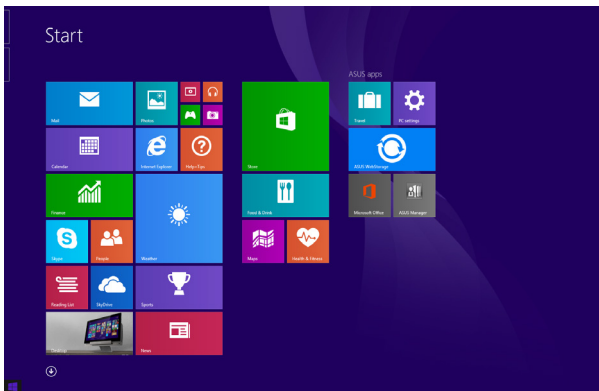
Hotspot	Action
top side	<p>Hover your mouse pointer on the top side until it changes to a hand icon. Drag then drop the app to a new location.</p> <hr/> <p>NOTE: This hotspot function only works on a running app or when you want to use the Snap feature. For more details, refer to the Snap feature under <i>Working with Windows® apps</i>.</p> <hr/>
upper or lower right corner	<p>Hover your mouse pointer on the upper or lower right corner to launch the Charms bar.</p> <hr/>

Start button

Windows® 8.1 features the Start button which allows you to switch between the two most recent apps you opened. The Start button may be accessed from the Start screen, while on Desktop mode, and on any app that is currently open onscreen.

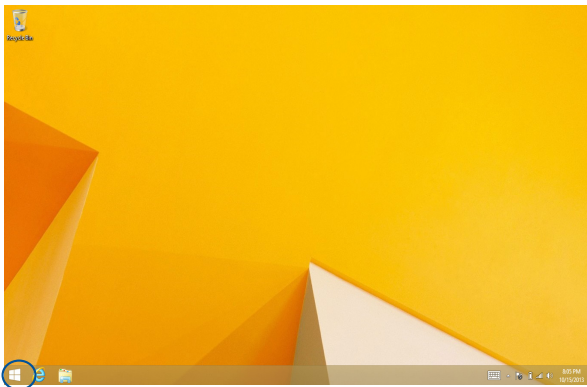
Start button on the Start screen

NOTE: The actual color of your Start button varies depending on the display settings you chose for your Start screen.



Hover your mouse pointer over the left corner of your Start screen or any opened app to call out the Start button.

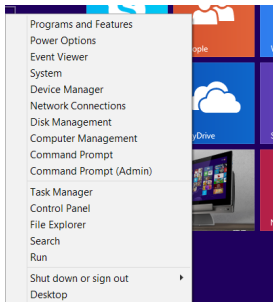
Start button on Desktop mode



Context menu

The context menu appears as a box filled with quick access to some of the programs inside Windows® 8.1 when you right-click on the Start button.

The context menu also includes the following shut down options for your ASUS All-in-One PC: sign out, sleep, shut down, restart.

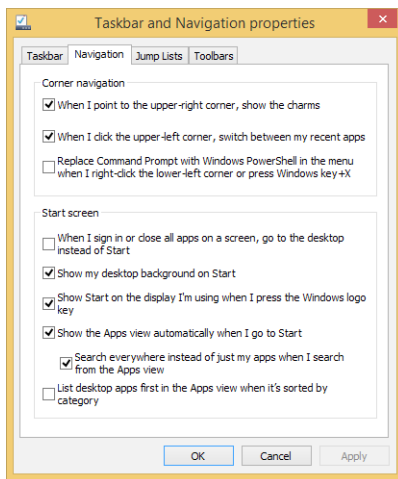


Customizing your Start screen

Windows® 8.1 also enables you to customize your Start screen, allowing you to boot directly to the Desktop mode and customize the arrangement of your apps onscreen.

To customize the settings of your Start screen:

1. Launch the Desktop.
2. Right-click anywhere on the taskbar, except on the Start button, to launch the pop-up window.
3. Click **Properties** then select the **Navigation** tab to tick the Navigation and Start screen options you want to use.



4. Tap/click **Apply** to save the new settings then exit.

Working with Windows® apps

Use your ASUS All-in-One PC's touch screen panel or optional keyboard and mouse to launch, customize, and close apps.

Launching apps

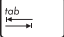
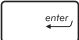


Tap an app to launch it.



Position your mouse pointer over the app then left-click or tap once to launch it.



Press  twice then use the arrow keys to browse through the apps. Press  to launch an app.

Customizing apps

You can move, resize, unpin, or close apps from the Start screen using any of the following options:

Moving apps




Tap and hold the app tile then drag it to a new location.




Double-click on the app then drag and drop the app to a new location.

Resizing apps



Tap and hold the app to activate the Customize bar then tap  and select an app tile size.



Right-click on the app to activate the Customize bar, then click  and select an app tile size.

Unpinning apps



Tap and hold the app to activate the Customize bar, then tap



to unpin an app.



Right-click on the app to activate the Customize bar then click



Closing apps



Tap and hold the top side of the running app then drag it down to the bottom of the screen to close it.



1. Move your mouse pointer on the top side of the launched app then wait for the pointer to change to a hand icon.
2. Drag then drop the app to the bottom of the screen to close it.

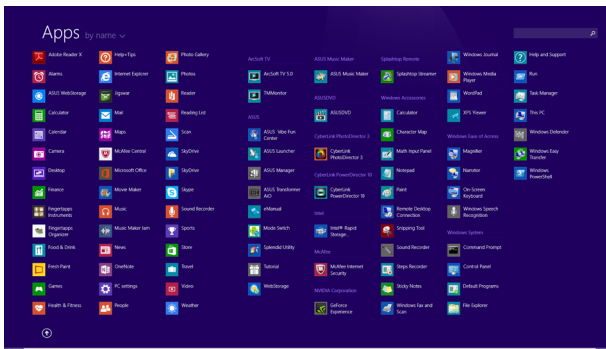


From the running app's screen, press `alt` + `F4`.

Accessing the Apps screen

Aside from the apps already pinned on your Start screen, you can also open other applications through the Apps screen.

NOTE: Actual apps shown onscreen may vary per model. The following screenshot is for reference only.




Launching the Apps screen

Launch the Apps screen using the following options:

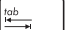


Swipe up on the Start screen.



On the Start screen, click the  button.




From the Start screen, Press  then press




Pinning more apps on the Start screen

You can pin more apps on the Start screen using the following options:



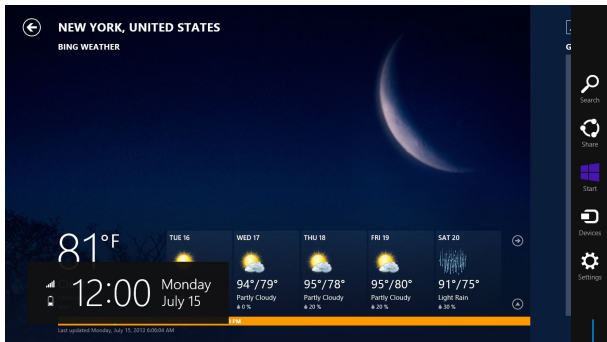
1. Launch the All Apps screen.
2. Tap and hold an app you want to add on the start to activate the Customize bar. Once the Customize bar is launched, you may also tap other more apps to add on the Start screen.
3. Tap  to pin the selected apps on the Start screen.



1. Launch the All Apps screen
2. Right-click on the apps that you want to add on the Start screen.
3. Click on the  icon to pin the selected apps on the Start screen.

Charms bar

The Charms bar is a toolbar that can be triggered on the right side of your screen. It consists of several tools that allow you to share applications and provide quick access for customizing the settings of your ASUS All-in-One PC.



Charms bar

Inside the Charm bar



Search

This charm allows you to look for files, applications, or programs in your ASUS All-in-One PC.



Share

This charm allows you to share applications via social networking sites or email.



Start

This charm reverts the display back to the Start screen. From the Start screen, you can also use this to revert back to a recently opened app.



Devices

This charm allows you to access and share files with the devices attached to your ASUS All-in-One PC such as an external display or printer.

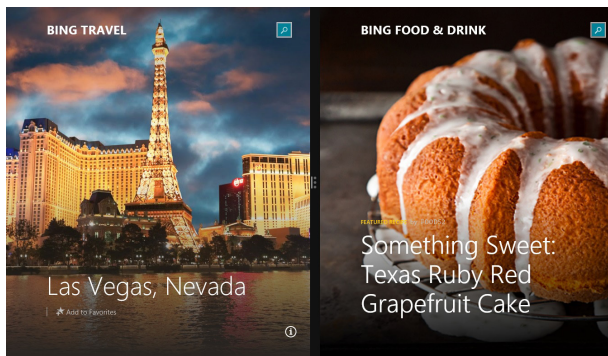


Settings

This charm allows you to access the PC settings of your ASUS All-in-One PC.

Snap feature

The Snap feature displays two apps side-by-side, allowing you to work or switch between apps.



Snap bar

Using Snap

Activate and use Snap through any of the following options:




1. Launch the app you wish to snap.
2. Tap and hold the app's topmost part then drag it to the left or right side of the screen until the snap bar appears.
3. Launch another app.



1. Launch the app you wish to snap.
2. Hover the mouse point on the top side of your screen.
3. Once the pointer changes to a hand icon, drag then drop the app to the left or right side of the display panel.
4. Launch another app.



1. Launch the app you wish to snap.
2. Press  and the left or right arrow key to snap the app to the left or right pane.
3. Launch another app. This app is automatically placed in the empty pane.

Other keyboard shortcuts

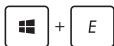
Using the keyboard, you can also use the following shortcuts to help you launch applications and navigate Windows® 8.1.



Switches between the Start screen and the last running app



Launches the desktop



Launches the **This ASUS All-in-One PC** window on Desktop mode



Opens the **File** option from the **Search** charm



Opens the **Share** charm



Opens the **Settings** charm



Opens the **Devices** charm



Activates the Lock screen



Minimizes all currently active windows



Launches the **Project** pane



Opens the **Everywhere** option from the **Search** charm



Opens the **Run** window



Opens **Ease of Access Center**



Opens the **Settings** option under the **Search** charm



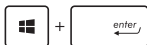
Opens the context menu of the Start button



Launches the magnifier icon and zooms in your screen



Zooms out your screen



Opens the **Narrator Settings**

Setting up a secondary display via the HDMI-output port

If you want to use a high-definition TV as an audio output device, connect it to the Home Theater ASUS All-in-One PC and follow the steps below to configure the audio settings.

To configure the audio output via an HDMI device:

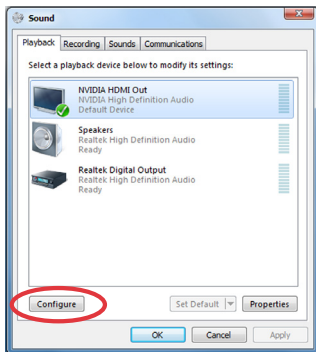
1. From the Start screen, launch the Desktop Mode.

NOTE: For more details, refer to the section *Start screen* under *Using Windows® 8.1*.

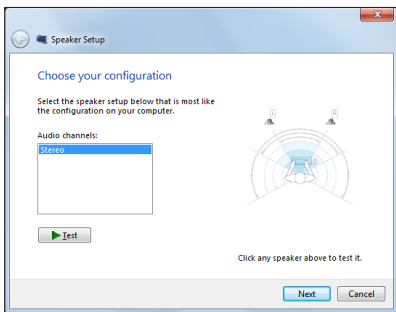
2. Right-click the Volume Mixer icon on the Windows® taskbar and click **Playback devices**.



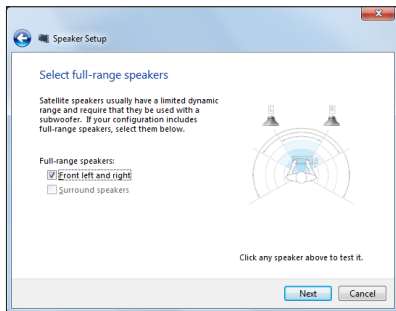
3. From the Playback screen, select **Digital Audio (HDMI)**.
4. Click **Configure** and the Speaker Setup window pops up.



5. Select **Stereo** and click **Next**.



6. Tick the **Front left and right** option, and click **Next**.
7. Click **Finish** to exit the speaker setup.



Connecting to the Internet

Access emails, surf the Internet, and share applications via social networking sites on or from your ASUS All-in-One PC using wireless/Wi-Fi or wired connection.

Setting up a Wi-Fi connection in Windows® 8.1

1. Launch the Charm bar from the Start screen or from any application mode.

NOTE: For details, refer to the section *Charm bar* under *Working with Windows® apps*.

2. From the Charm bar, select **Settings** and click the network icon




3. Select the wireless network that you want to connect to from the list.
4. Click **Connect**.

NOTE: You may be prompted to enter a security key to connect to a secured wireless network.

Configuring your Wi-Fi bandwidth



1. Launch the Desktop mode then right-click on  on the taskbar.
2. Select **Open Network and Sharing Center**.
3. In the Network and Sharing Center window, select the Wi-Fi status beside **Connections**.
4. In the Wi-Fi status window, select **Properties > Configure** to launch your current network adapter's properties.
5. In the your current network adapter properties window, select the **Advanced** tab.
6. In the Advanced tab, select **Bandwidth Capability** under the **Property** option then select your preferred bandwidth setting by clicking on the drop-down box below **Value**.
7. Click **OK** to save and exit.

Wired connection


1. Use a network (RJ-45) cable to connect your ASUS All-in-One PC to a DSL/cable modem or a local area network (LAN).
2. Turn on your computer.
3. Configure the necessary Internet connection settings.

NOTES:

- For more details, refer to the sections *Configuring a dynamic IP/PPPoE network connection* or *Configuring a static IP network connection*.
 - Contact your Internet Service Provider (ISP) for details or assistance in setting up your Internet connection.
-

Configuring a dynamic IP/PPPoE network connection

To configure a dynamic IP/PPPoE or static IP network connection:

1. From the Start screen, click **Desktop** to launch the Desktop mode.
2. From the Windows® taskbar, right-click the network icon  and click **Open Network and Sharing Center**.
3. From the Open Network and Sharing Center screen, click **Change Adapter settings**.
4. Right-click on your LAN and select **Properties**.
5. Click **Internet Protocol Version 4(TCP/IPv4)** and click **Properties**.

6. Click **Obtain an IP address automatically** and click **OK**.

NOTE: Continue to the next steps if you are using PPPoE connection.

7. Return to the **Network and Sharing Center** and then click Set up a new connection or network.
8. Select **Connect to the Internet** and click **Next**.
9. Select **Broadband (PPPoE)** and click **Next**.
10. Enter your **Username, Password, and Connection name**. Click **Connect**.
11. Click **Close** to finish the configuration.
12. Click the network icon in the taskbar and click the connection you just created.
13. Enter your user name and password. Click **Connect** to connect to the Internet.

Configuring a static IP network connection

To configure a static IP network connection:

1. Repeat steps 1 to 4 of the previous section **Configuring a dynamic IP/PPPoE network connection**.
2. Click **Use the following IP address**.
3. Enter the IP address, Subnet mask and Gateway from your service provider.
4. If needed, enter the preferred DNS Server address and alternative address.
5. When done, click **OK**.

Turning your ASUS All-in-One PC off

Do either of the following to shut down your ASUS All-in-One PC:

- Tap/click from the Charms bar then tap/click  >

Shut down to do a normal shutdown.

- If your ASUS All-in-One PC is unresponsive, press and hold the power button for at least four (4) seconds until your ASUS All-in-One PC turns off.

Chapter 4: Recovering your system

Entering the BIOS Setup

BIOS (Basic Input and Output System) stores system hardware settings that are needed for system startup in the ASUS All-in-One PC.

In normal circumstances, the default BIOS settings apply to most conditions to ensure optimal performance. Do not change the default BIOS settings except in the following circumstances:

- An error message appears on the screen during the system bootup and requests you to run the BIOS Setup.
- You have installed a new system component that requires further BIOS settings or update.

WARNING! Inappropriate BIOS settings may result to instability or boot failure. We strongly recommend that you change the BIOS settings only with the help of a trained service personnel.

Quickly enter the BIOS

To access the BIOS:

- When your ASUS All-in-One PC is off, press the power button for at least four (4) seconds to access the BIOS directly.
- Press the power button to turn on your ASUS All-in-One PC then press <F2> or during POST.

NOTE: POST (Power-On Self-Test) is a series of software controlled diagnostic tests that run when you turn on your ASUS All-in-One PC.

Recovering your system

Resetting your PC

The **Reset your PC** option restores your PC to its factory default settings.

IMPORTANT! Back up all your data before using this option.

To reset your PC:

1. Press <**F9**> during bootup.

IMPORTANT! To go through POST, follow any of the ways described in the section *Quickly enter the BIOS* in Chapter 3.

2. From the screen, click **Troubleshoot**.
3. Select **Reset your PC**.
4. Click **Next**.
5. Select **Only the drive where the Windows is installed**.
6. Select **Just remove my files**.
7. Click **Reset**.

Recovering from a system image file

You can create a USB recovery drive and use this to recover your PC's settings.

Creating a USB recovery drive

WARNING! All files on your USB storage device will be permanently deleted during the process. Before you proceed, ensure that you back up all your important data.

To create a USB recovery drive:

1. Launch the Control Panel from the All Apps screen.

NOTE: For details, refer to *Launching the All Apps screen* under *Working with Windows® apps*.

2. From the Control Panel's System and Security, click **Find and fix problems**.
3. Click **Recovery > Create a recovery drive**.
4. Click **Next**.
5. Select the USB storage device where you want to copy the recovery files.
6. Click **Next**.
7. Click **Create**. Wait for a while for the process to complete.
8. When the process is completed, click **Finish**.

Removing everything and reinstalling Windows

Restoring your PC to its original factory settings can be done using the Remove everything and reinstall option in PC Settings. Refer to the steps below to use this option.

IMPORTANT! Back up all your data before using this option.

NOTE: This process may take a while to complete.

1. Launch the Charms bar.
2. Click **Settings > Change PC Settings > General**.
3. Scroll down to view the Remove everything and reinstall Windows option. Under this option, click **Get Started**.
4. Follow the onscreen instructions to complete the reinstallation and reset process.

Chapter 5: Upgrading your ASUS All-in-One PC

Installing a Random-access Memory module

Upgrade the memory capacity of your ASUS All-in-One PC by installing a RAM (random-access memory module) in the memory module compartment.

WARNING! Disconnect all the connected peripherals, any telephone or telecommunication lines and power connector (such as external power supply, battery pack, etc.) before removing the compartment cover.

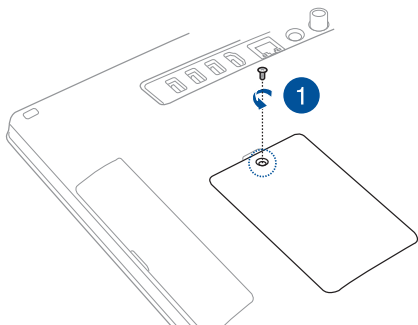
IMPORTANT!

- Visit an authorized service center or retailer for information on RAM module upgrades for your ASUS All-in-One PC.
 - Purchase RAM modules from authorized retailers of this ASUS All-in-One PC to ensure maximum compatibility and reliability.
-

NOTE: The appearance of the RAM module may vary per model but the RAM module installation remains the same.

To install a RAM module:

1. Loosen the screw of the ASUS All-in-One PC's compartment cover.
2. Pull out the compartment cover and remove it completely from your ASUS All-in-One PC. Set aside.
3. Remove the metal cover (on selected models) then set aside.

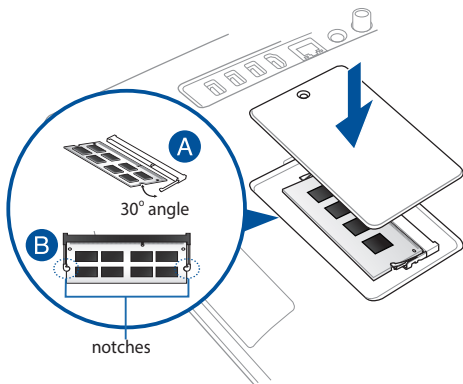


4. Get the RAM module.
5. Align and insert the RAM module into the RAM module slot (A) then push it down until it clicks in place (B).

NOTES:

- Use both hands in performing this step.
 - The RAM module fits in one orientation only. If it does not fit, try reversing it.
 - Ensure that the RAM module is seated securely in place. The side notches of the RAM module should be firmly fixed in place.
-

6. Replace the compartment cover.
7. Secure the compartment cover using the screw that you removed earlier in step 1.



Appendices

Notices

Federal Communication Commission Interference Statement

This equipment has been tested and found to comply with the limits for a Class B digital device, pursuant to Part 15 of the FCC Rules. These limits are designed to provide reasonable protection against harmful interference in a residential installation. This equipment generates, uses and can radiate radio frequency energy and, if not installed and used in accordance with the instructions, may cause harmful interference to radio communications. However, there is no guarantee that interference will not occur in a particular installation. If this equipment does cause harmful interference to radio or television reception, which can be determined by turning the equipment off and on, the user is encouraged to try to correct the interference by one or more of the following measures:

- Reorient or relocate the receiving antenna.
- Increase the separation between the equipment and receiver.
- Connect the equipment into an outlet on a circuit different from that to which the receiver is connected.
- Consult the dealer or an experienced radio/TV technician for help.

FCC Caution: Any changes or modifications not expressly approved by the party responsible for compliance could void the user's authority to operate this equipment.

This device complies with Part 15 of the FCC Rules. Operation is subject to the following two conditions: (1) This device may not cause harmful interference, and (2) this device must accept any interference received, including interference that may cause undesired operation.

This device and its antenna(s) must not be co-located or operating in conjunction with any other antenna or transmitter.

This device is restricted to indoor use when operated in the 5.15 to 5.25 GHz frequency range.

This device complies with Industry Canada licence-exempt RSS standard(s). Operation is subject to the following two conditions: (1) this device may not cause interference, and (2) this device must accept any interference, including interference that may cause undesired operation of the device

RF exposure warning

The equipment complies with FCC RF exposure limits set forth for an uncontrolled environment.

The equipment must not be co-located or operating in conjunction with any other antenna or transmitter.

IMPORTANT! Outdoor operations in the 5.15~5.25 GHz band is prohibited. This device has no Ad-hoc capability for 5250~5350 and 5470~5725 MHz.

CAUTION: Any changes or modifications not expressly approved by the guarantee of this device could void the user's authority to operate the equipment.

Canadian Department of Communications Statement

This digital apparatus does not exceed the Class B limits for radio noise emissions from digital apparatus set out in the Radio Interference Regulations of the Canadian Department of Communications.

This class B digital apparatus complies with Canadian ICES-003.

IC Radiation Exposure Statement for Canada

This equipment complies with IC radiation exposure limits set forth for an uncontrolled environment. To maintain compliance with IC RF exposure compliance requirements, please avoid direct contact to the transmitting antenna during transmitting. End users must follow the specific operating instructions for satisfying RF exposure compliance.

Operation is subject to the following two conditions:

- This device may not cause interference and
- This device must accept any interference, including interference that may cause undesired operation of the device.

Canada, Industry Canada (IC) Notices

This Class B digital apparatus complies with Canadian ICES-003 and RSS-210. Operation is subject to the following two conditions:

1) this device may not cause interference, and 2) this device must accept any interference, including interference that may cause undesired operation of the device.

Radio Frequency (RF) Exposure Information

The radiated output power of the wireless device is below the Industry Canada (IC) radio frequency exposure limits. The wireless device should be used in such a manner such that the potential for human contact during normal operation is minimized.

Canada, avis d'Industry Canada (IC)

Cet appareil numérique de classe B est conforme aux normes canadiennes ICES-003 et RSS-210.

Son fonctionnement est soumis aux deux conditions suivantes: 1) cet appareil ne doit pas causer d'interférence et 2) cet appareil doit accepter toute interférence, notamment les interférences qui peuvent affecter son fonctionnement.

Informations concernant l'exposition aux fréquences radio (RF)

La puissance de sortie émise par l'appareil de sans fil est inférieure à la limite d'exposition aux fréquences radio d'Industry Canada (IC). Utilisez l'appareil de sans fil de façon à minimiser les contacts humains lors du fonctionnement normal.

India RoHS

This product complies with the "India E-waste (Management and Handling) Rule 2011" and prohibits use of lead, mercury, hexavalent chromium, polybrominated biphenyls (PBBs), and polybrominated diphenyl ethers (PBDEs) in concentrations exceeding 0.1 % by weight in homogenous materials and 0.01 % by weight in homogenous materials for cadmium, except for the exemptions listed in Schedule-II of the Rule.

Declaration of Conformity (R&TTE directive 1999/5/EC)

The following items were completed and are considered relevant and sufficient:

Essential requirements as in [Article 3]

Protection requirements for health and safety as in [Article 3.1a]

Testing for electric safety according to [EN 60950]

Protection requirements for electromagnetic compatibility in [Article 3.1b]

Testing for electromagnetic compatibility in [EN 301 489-1] & [EN 301 489-17] & [EN 301 489-3]

Effective use of the radio spectrum as in [Article 3.2]

Radio test suites according to [EN 300 328-2]

Wireless Operation Channel for Different Domains

N. America 2.412-2.462 GHz Ch01 through CH11

Japan 2.412-2.484 GHz Ch01 through Ch14

Europe ETSI 2.412-2.472 GHz Ch01 through Ch13

In the frequency band 5 150-5 350 MHz, WAS/RLANs shall be restricted to indoor use.

CE Mark Warning

This is a Class B product, in a domestic environment, this product may cause radio interference, in which case the user may be required to take adequate measures.



CE marking for devices without wireless LAN/Bluetooth

The shipped version of this device complies with the requirements of the EEC directives 2004/108/EC "Electromagnetic compatibility" and 2006/95/EC "Low voltage directive".



CE marking for devices with wireless LAN/Bluetooth

This equipment complies with the requirements of Directive 1999/5/EC of the European Parliament and Commission from 9 March, 1999 governing Radio and Telecommunications Equipment and mutual recognition of conformity.

 is for class II device.

NO DISASSEMBLY

The warranty does not apply to the products that have been disassembled by users

Lithium-Ion Battery Warning

CAUTION: Danger of explosion if battery is incorrectly replaced. Replace only with the same or equivalent type recommended by the manufacturer. Dispose of used batteries according to the manufacturer's instructions.

No Exposure to Liquids

DO NOT expose to or use near liquids, rain, or moisture. This product is not waterproof or oil-proof.



This symbol of the crossed out wheeled bin indicates that the product (electrical, electronic equipment, and mercury-containing button cell battery) should not be placed in municipal waste. Check local regulations for disposal of electronic products.



DO NOT throw the battery in municipal waste. The symbol of the crossed out wheeled bin indicates that the battery should not be placed in municipal waste.



請勿將電池當作一般垃圾丟棄。這個標誌表示電池不應視為一般垃圾丟棄。

REACH

Complying with the REACH (Registration, Evaluation, Authorization, and Restriction of Chemicals) regulatory framework, we publish the chemical substances in our products at ASUS REACH website at <http://csr.asus.com/english/REACH.htm>.

Global Environmental Regulation Compliance and Declaration

ASUS follows the green design concept to design and manufacture our products, and makes sure that each stage of the product life cycle of ASUS product is in line with global environmental regulations. In addition, ASUS disclose the relevant information based on regulation requirements.

Please refer to <http://csr.asus.com/english/Compliance.htm> for information disclosure based on regulation requirements ASUS is complied with:

Japan JIS-C-0950 Material Declarations

EU REACH SVHC

Korea RoHS

ASUS Recycling/Takeback Services

ASUS recycling and takeback programs come from our commitment to the highest standards for protecting our environment. We believe in providing solutions for you to be able to responsibly recycle our products, batteries, other components as well as the packaging materials. Please go to <http://csr.asus.com/english/Takeback.htm> for detailed recycling information in different regions.

Coating Notice

IMPORTANT! To provide electrical insulation and maintain electrical safety, a coating is applied to insulate the device except on the areas where the I/O ports are located.

Prevention of Hearing Loss

To prevent possible hearing damage, do not listen at high volume levels for long periods.



A pleine puissance, l'écoute prolongée du baladeur peut endommager l'oreille de l'utilisateur.

TV tuner

Note to CATV System Installer—This reminder is provided to call the CATV system installer's attention to section 820-93 of the National Electric Code, which provides guidelines for proper grounding and, in particular, specify that the Coaxial cable shield be connected to the grounding system of the building as close to the point of cable entry as practical.

ENERGY STAR complied product



ENERGY STAR is a joint program of the U.S. Environmental Protection Agency and the U.S. Department of Energy helping us all save money and protect the environment through energy efficient products and practices.

All ASUS products with the ENERGY STAR logo comply with the ENERGY STAR standard, and the power management feature is enabled by default. The monitor and computer are automatically set to sleep after 10 and 30 minutes of user inactivity. To wake your computer, click the mouse or press any key on the keyboard.

Please visit <http://www.energy.gov/powermanagement> for detail information on power management and its benefits to the environment. In addition, please visit <http://www.energystar.gov> for detail information on the ENERGY STAR joint program.

NOTE: ENERGY STAR is NOT supported on FreeDOS and Linux-based products.

Manufacturer	ASUSTeK Computer Inc.	
	Tel:	+886-2-2894-3447
	Address:	4F, No. 150, LI-TE RD., PEITOU, TAIPEI 112, TAIWAN
Authorised representative in Europe	ASUSTeK Computer GmbH	
	Address:	HARKORT STR. 21-23, 40880 RATINGEN, GERMANY