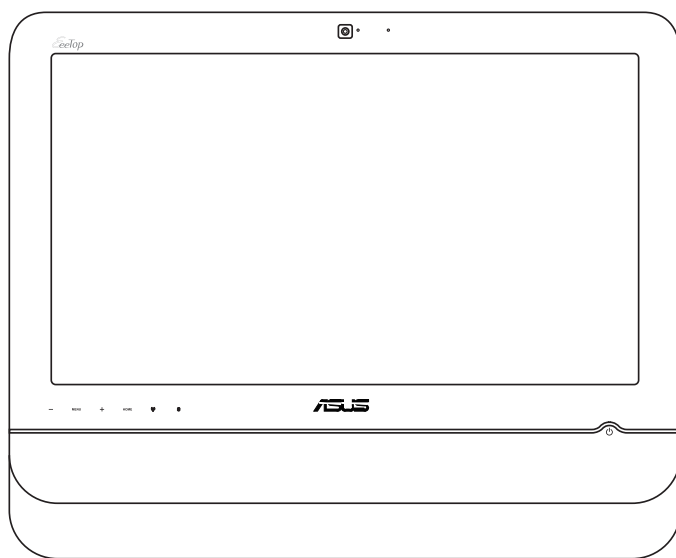


# *EeeTop PC*

## **User Manual**



**ET22 Series**

E5008

Second Edition V2

August 2009

**Copyright © 2009 ASUSTeK COMPUTER INC. All Rights Reserved.**

No part of this manual, including the products and software described in it, may be reproduced, transmitted, transcribed, stored in a retrieval system, or translated into any language in any form or by any means, except documentation kept by the purchaser for backup purposes, without the express written permission of ASUSTeK COMPUTER, INC. ("ASUS").

Products and corporate names mentioned in this manual may or may not be registered trademarks or copyrights of their respective companies, and are used for identification purposes only. All trademarks are the property of their respective owners.

Every effort has been made to ensure that the contents of this manual are correct and up to date. However, the manufacturer makes no guarantee regarding the accuracy of its contents, and reserves the right to make changes without prior notice.

# Contents

<b>Contents .....</b>	<b>3</b>
Notices .....	4
Notes for this manual .....	9
Safety information .....	10
<b>Welcome .....</b>	<b>11</b>
Package contents .....	11
<b>Getting to know your EeeTop PC .....</b>	<b>12</b>
Front view .....	12
Rear view .....	15
Side views .....	17
Using the touch screen (on selected models) .....	18
Showing the touch pointer .....	18
Cleaning the touch screen .....	19
Using the keyboard .....	20
<b>Positioning your EeeTop PC .....</b>	<b>22</b>
Placing on the desktop .....	22
<b>Setting up your EeeTop PC .....</b>	<b>23</b>
Connecting the wired keyboard and mouse .....	23
Connecting the wireless keyboard and mouse .....	23
Powering on the system .....	24
Powering off .....	24
Calibrating the screen .....	25
Configuring a wireless connection .....	26
Configuring a wired connection .....	27
Using a static IP .....	27
Using a dynamic IP (PPPoE) .....	29
Configuring the audio output .....	32
Speaker configurations .....	32
Connecting to speakers .....	32
Configuring audio output settings .....	33
<b>Recovering your system .....</b>	<b>34</b>
Using the support DVD .....	34
Using the hidden partition .....	35

## Notices

### Federal Communications Commission Statement

This device complies with Part 15 of the FCC Rules. Operation is subject to the following two conditions:

- This device may not cause harmful interference, and
- This device must accept any interference received including interference that may cause undesired operation.

This equipment has been tested and found to comply with the limits for a Class B digital device, pursuant to Part 15 of the FCC Rules. These limits are designed to provide reasonable protection against harmful interference in a residential installation. This equipment generates, uses and can radiate radio frequency energy and, if not installed and used in accordance with manufacturer's instructions, may cause harmful interference to radio communications. However, there is no guarantee that interference will not occur in a particular installation. If this equipment does cause harmful interference to radio or television reception, which can be determined by turning the equipment off and on, the user is encouraged to try to correct the interference by one or more of the following measures:

- Reorient or relocate the receiving antenna.
- Increase the separation between the equipment and receiver.
- Connect the equipment to an outlet on a circuit different from that to which the receiver is connected.
- Consult the dealer or an experienced radio/TV technician for help.

**CAUTION:** Any changes or modifications not expressly approved by the grantee of this device could void the user's authority to operate the equipment.

### *RF exposure warning*

This equipment must be installed and operated in accordance with provided instructions and the antenna(s) used for this transmitter must be installed to provide a separation distance of at least 20 cm from all persons and must not be co-located or operating in conjunction with any other antenna or transmitter. End-users and installers must be provide with antenna installation instructions and transmitter operating conditions for satisfying RF exposure compliance.

## Canadian Department of Communications Statement

This digital apparatus does not exceed the Class B limits for radio noise emissions from digital apparatus set out in the Radio Interference Regulations of the Canadian Department of Communications.

This class B digital apparatus complies with Canadian ICES-003.

## IC Radiation Exposure Statement for Canada

This equipment complies with IC radiation exposure limits set forth for an uncontrolled environment. To maintain compliance with IC RF exposure compliance requirements, please avoid direct contact to the transmitting antenna during transmitting. End users must follow the specific operating instructions for satisfying RF exposure compliance.

Operation is subject to the following two conditions:

- This device may not cause interference and
- This device must accept any interference, including interference that may cause undesired operation of the device.

## Declaration of Conformity (R&TTE directive 1999/5/EC)

The following items were completed and are considered relevant and sufficient:

- Essential requirements as in [Article 3]
- Protection requirements for health and safety as in [Article 3.1a]
- Testing for electric safety according to [EN 60950]
- Protection requirements for electromagnetic compatibility in [Article 3.1b]
- Testing for electromagnetic compatibility in [EN 301 489-1] & [EN 301 489-17]
- Effective use of the radio spectrum as in [Article 3.2]
- Radio test suites according to [EN 300 328-2]

## CE Mark Warning

This is a Class B product, in a domestic environment, this product may cause radio interference, in which case the user may be required to take adequate measures.

## Wireless Operation Channel for Different Domains

N. America	2.412-2.462 GHz	Ch01 through CH11
Japan	2.412-2.484 GHz	Ch01 through Ch14
Europe ETSI	2.412-2.472 GHz	Ch01 through Ch13

## France Restricted Wireless Frequency Bands

Some areas of France have a restricted frequency band. The worst case maximum authorized power indoors are:

- 10mW for the entire 2.4 GHz band (2400 MHz–2483.5 MHz)
- 100mW for frequencies between 2446.5 MHz and 2483.5 MHz



Channels 10 through 13 inclusive operate in the band 2446.6 MHz to 2483.5 MHz.

There are few possibilities for outdoor use: On private property or on the private property of public persons, use is subject to a preliminary authorization procedure by the Ministry of Defense, with maximum authorized power of 100mW in the 2446.5–2483.5 MHz band. Use outdoors on public property is not permitted.

In the departments listed below, for the entire 2.4 GHz band:

- Maximum authorized power indoors is 100mW
- Maximum authorized power outdoors is 10mW

Departments in which the use of the 2400–2483.5 MHz band is permitted with an EIRP of less than 100mW indoors and less than 10mW outdoors:

01 Ain	02 Aisne	03 Allier	05 Hautes Alpes	
08 Ardennes	09 Ariège	11 Aude	12 Aveyron	16 Charente
24 Dordogne	25 Doubs	26 Drôme	32 Gers	36 Indre
37 Indre et Loire	41 Loir et Cher	45 Loiret	50 Manche	55 Meuse
58 Nièvre	59 Nord	60 Oise	61 Orne	63 Puy du Dôme
64 Pyrénées Atlantique	66 Pyrénées Orientales	67 Bas Rhin	68 Haut Rhin	
70 Haute Saône	71 Saône et Loire	75 Paris	82 Tarn et Garonne	
84 Vaucluse	88 Vosges	89 Yonne		
90 Territoire de Belfort	94 Val de Marne			

This requirement is likely to change over time, allowing you to use your wireless LAN card in more areas within France. Please check with ART for the latest information ([www.art-telecom.fr](http://www.art-telecom.fr))



Your WLAN Card transmits less than 100mW, but more than 10mW.

**NO DISASSEMBLY**

**The warranty does not apply to the products that have been disassembled by users**

**Lithium-Ion Battery Warning**

**CAUTION:** Danger of explosion if battery is incorrectly replaced. Replace only with the same or equivalent type recommended by the manufacturer. Dispose of used batteries according to the manufacturer's instructions.

**No Exposure to Liquids**

DO NOT expose to or use near liquids, rain, or moisture. This product is not waterproof or oil-proof.



This symbol of the crossed out wheeled bin indicates that the product (electrical, electronic equipment, and mercury-containing button cell battery) should not be placed in municipal waste. Check local regulations for disposal of electronic products.



DO NOT throw the battery in municipal waste. The symbol of the crossed out wheeled bin indicates that the battery should not be placed in municipal waste.

**REACH**

Complying with the REACH (Registration, Evaluation, Authorization, and Restriction of Chemicals) regulatory framework, we publish the chemical substances in our products at ASUS REACH website at <http://green.asus.com/english/REACH.htm>.

## Takeback and Recycling

Old computers, notebook computers, and other electronic equipment contain hazardous chemicals that are harmful to the environment when disposed in a landfill with trash. By recycling, the metals, plastics, and components found in an old computer will be broken down and reused to make new products. And, the environment is protected from any uncontrolled release of harmful chemicals.

ASUS works with recycling vendors with the highest standards for protecting our environment, ensuring worker safety, and complying with global environmental laws. Our commitment to recycling our old equipment grows out of our work to protect the environment in many ways.

For further information about ASUS product recycling and contacts, please visit GreenASUS Takeback and Recycling page at <http://green.asus.com/english/takeback.htm>.

## Note to CATV System Installer

This reminder is provided to call the CATV systems installer's attention to section 820-93 of the National Electric Code, which provides guidelines for proper grounding and in particular, specifies that the coaxial cable shield shall be connected to the grounding system of the building, as close to the point of cable entry as possible.

For Norway special national conditions requirement, when the unit intended to be connected to CABLE DISTRIBUTION SYSTEMS, the screen of a coax cable is required to be galvanic isolated from the protective earth, the Norwegian text "Må kun tilkoples kabel-TV nett via galvanisk isolator" is stated in the user manual.



## Notes for this manual

To ensure that you perform certain tasks properly, take note of the following symbols used throughout this manual.



**WARNING:** Vital information that you **MUST** follow to prevent injury to yourself.



**IMPORTANT:** Instructions that you **MUST** follow to complete a task.



**TIP:** Tips and useful information that help you complete a task.



**NOTE:** Additional information for special situations.

All illustrations and screenshots in this manual are for reference only. Actual product specifications and software screen images may vary with territories. Visit the ASUS website at [www.asus.com](http://www.asus.com) for the latest information.

## Safety information

Your EeeTop PC ET22 Series is designed and tested to meet the latest standards of safety for information technology equipment. However, to ensure your safety, it is important that you read the following safety instructions.

### Setting up your system

- Read and follow all instructions in the documentation before you operate your system.
- Do not use this product near water or a heated source such as a radiator.
- Set up the system on a stable surface.
- Openings on the chassis are for ventilation. Do not block or cover these openings. Ensure that you leave plenty of space around the system for ventilation. Never insert objects of any kind into the ventilation openings.
- Use this product in environments with ambient temperatures between 0°C and 40°C.
- If you use an extension cord, ensure that the total ampere rating of the devices plugged into the extension cord does not exceed its ampere rating.

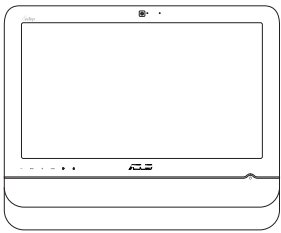
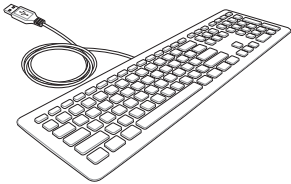
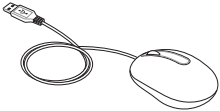
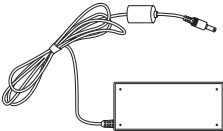
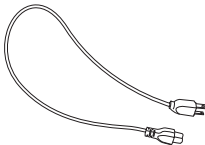


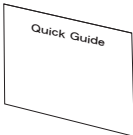

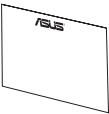
### Care during use

- Do not walk on the power cord or allow anything to rest on it.
- Do not spill water or any other liquids on your system.
- When the system is turned off, a small amount of electrical current still flows. Always unplug all power, modem, and network cables from the power outlets before cleaning the system.
- The touch screen requires periodic cleaning to achieve the best touch sensitivity. Keep the screen clean from foreign objects or excessive dust accumulation. To clean the screen:
  - Turn off the system and disconnect the power cord from the wall.
  - Spray a small amount of a household glass cleaner onto the supplied cleaning cloth and gently wipe the screen surface.
  - Do not spray the cleaner directly on the screen.
  - Do not use an abrasive cleaner or a coarse cloth when cleaning the screen.
- If you encounter the following technical problems with the product, unplug the power cord and contact a qualified service technician or your retailer.
  - The power cord or plug is damaged.
  - Liquid has been spilled into the system.
  - The system does not function properly even if you follow the operating instructions.
  - The system was dropped or the cabinet is damaged.
  - The system performance changes.

## Welcome

Congratulations on your purchase of EeeTop PC ET22 Series. The following illustration displays the package contents of your new product. If any of the following items is damaged or missing, contact your retailer.

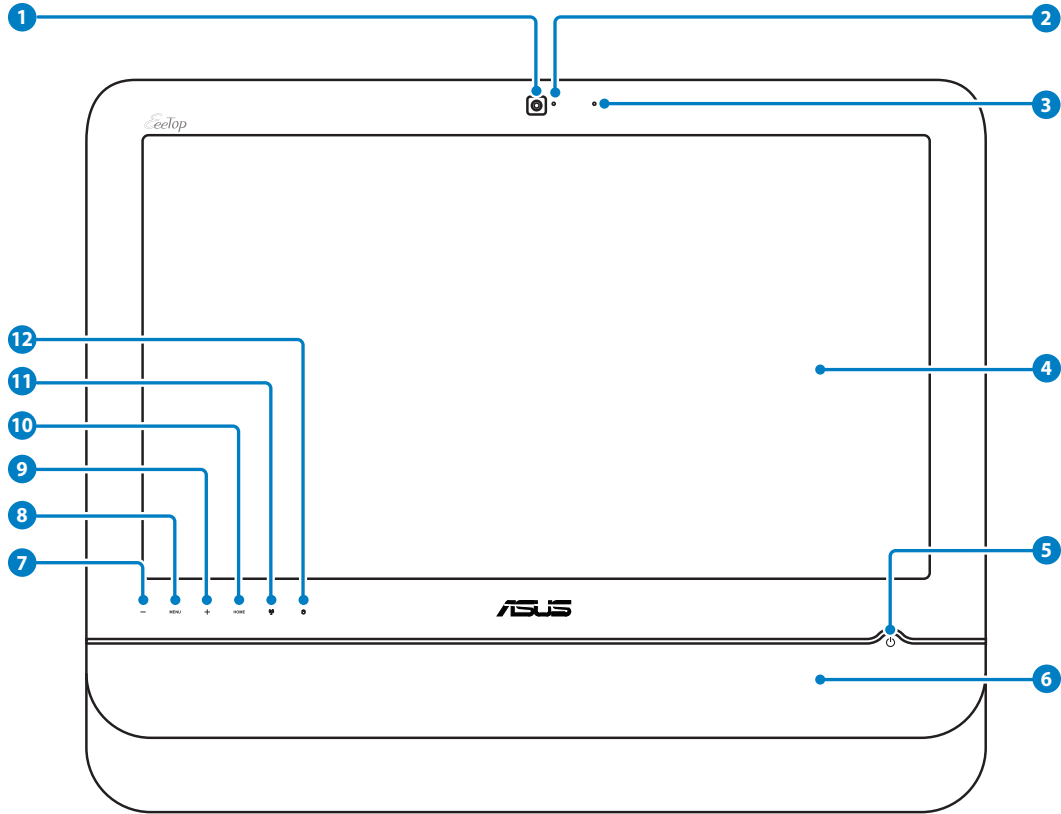
### Package contents

		
<b>EeeTop PC ET22 Series</b>	<b>Keyboard (wired or wireless)</b>	<b>Mouse (wired or wireless)</b>
		
<b>AC adapter</b>	<b>Power cord</b>	<b>Cleaning cloth</b>
		
<b>Remote control (optional)</b>	<b>Quick Start Guide</b>	<b>Support DVD</b>
		
<b>Warranty card</b>		
<b>Note:</b> <ol style="list-style-type: none"> <li>1. The number and content of the discs may vary with territories.</li> <li>2. The keyboard, mouse, and power supply illustrations are for reference only. Actual product specifications may vary with territories.</li> </ol>		

# Getting to know your EeeTop PC

## Front view

Refer to the following diagram to identify the components on this side of the system.



- 1 Webcam**  
The built-in webcam with the digital microphone allows you to start video chats online.
- 2 Webcam LED**  
Indicates that the built-in webcam is enabled.

### 3 **Digital Microphone (Built-in)**

The built-in microphone can be used for video conferencing, voice narrations, audio recordings, and multimedia applications.




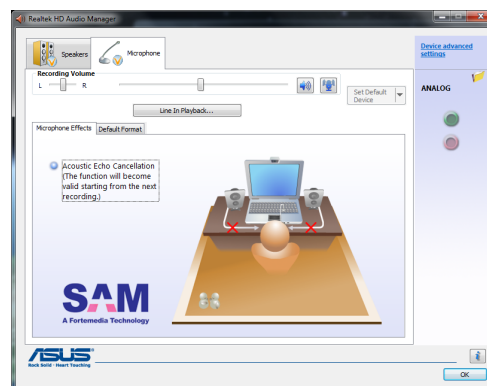
Use the following methods to enable the built-in webcam and microphone.

- Go to **Control Panel > Scanners and Cameras > USB Video Device #2** and follow the onscreen instructions.
- Launch the **Eee Cam** application from the desktop. Refer to the Software Manual for details.
- Start video chats with **Windows® Live Messenger** or **Skype™**.



To optimize the microphone performance through Realtek HD Audio Manager:

1. Double-click  in the notification area to open **Realtek HD Audio Manager**.
2. Click the **Microphone** tab and click **Acoustic Echo Cancellation** to enhance the microphone performance.
3. When done, click **OK**.



### 4 **LCD display (Touch-enabled function on selected models)**

The 21.6-inch LCD display, with an optimal resolution of 1920 x 1080, features touch function that brings digital life to your fingertips.

### 5 **Power switch**

The power switch allows you to switch the system ON/OFF.

### 6 **Stereo speakers**



The built-in stereo speakers deliver high-quality audio output.

### 7 **Down Button**

Press to decrease the display brightness. Press to scroll down when navigating the menu.

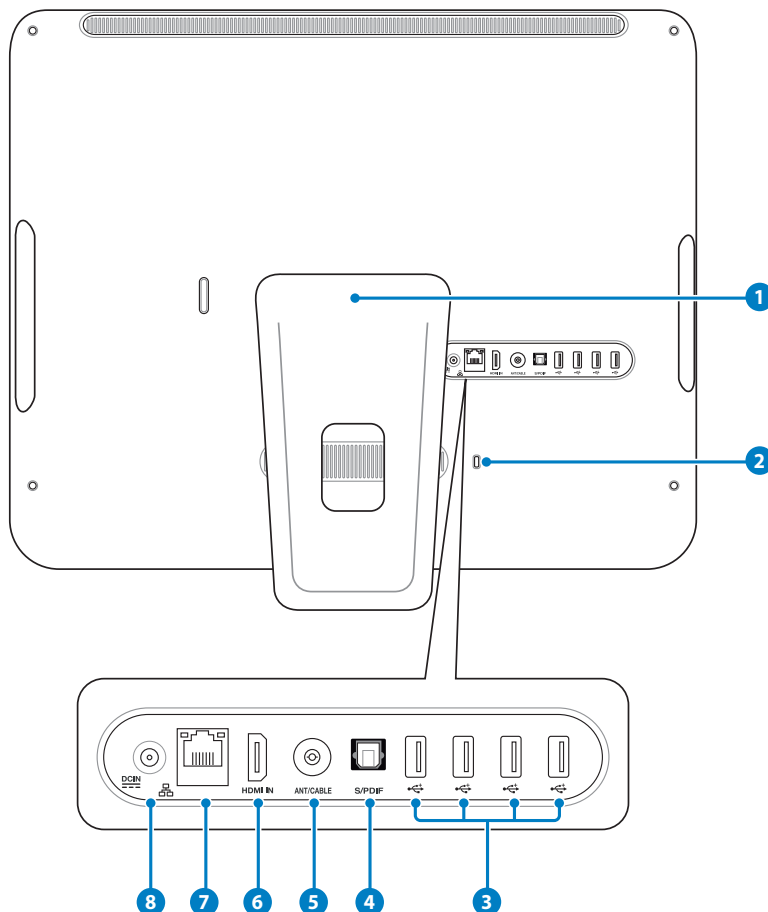
### 8 **Menu Button**

Press to display the menu.

- 9 **Up Button**  
Press to increase the display brightness. Press to scroll up when navigating the menu.
- 10 **Home Button**  
Press to switch between system desktop and applications.
- 11  **Hard disk drive LED**  
Indicates hard disk drive activity.
- 12  **Wireless LAN LED**  
Indicates that the internal wireless LAN is enabled. (Windows® software settings are necessary to use the wireless LAN.)

## Rear view

Refer to the following diagram to identify the components on this side of the system.



1

### Stand

Allows you to adjust the angle of the display panel.

2



### Kensington® Lock port




The Kensington® lock port allows the computer to be secured using Kensington® compatible security products. These security products usually include a metal cable and lock that prevent the computer to be removed from a fixed object.

3



### USB port

The Universal Serial Bus (USB) port is compatible with USB devices such as keyboards, mouse devices, cameras, and hard disk drives.

- 4 Optical S/PDIF Out port**  
The optical S/PDIF Out port connects an external audio output device via an optical S/PDIF cable.
- 5  Antenna Input (on selected models)**  
The antenna input is for TV or FM Radio (on selected models) frequency signal and allows for use with the provided digital TV/FM antenna or input from subscription television services. The provided antenna can receive digital TV or FM radio. Cable service connection can receive digital TV, analog TV, or FM radio depending on paid services. **Note: Use the provided adapter for use with coaxial connectors.**
- 6 HDMI-In Port**  
HDMI (High-Definition Multimedia Interface) is an uncompressed all-digital audio/video interface between any audio/video source, such as a set-top box, DVD player, and A/V receiver and an audio and/or video monitor, such as a digital television (DTV).
- 7  LAN port**  
The eight-pin RJ-45 LAN port supports a standard Ethernet cable for connection to a local network.
- 8  Power input (DC 19V)**  
The supplied power adapter converts AC power to DC power for use with this jack. Power supplied through this jack supplies power to the PC. To prevent damage to the PC, always use the supplied power adapter.



The power adapter may become warm or hot when in use. Do not cover the adapter and keep it away from your body.



## Side views

Refer to the following diagrams to identify the components on both sides of the system.

### 1 **Memory card reader**

The built-in memory card reader reads MMC/SD/MS cards used in devices like digital cameras, MP3 players, mobile phones, and PDAs.

### 2 **Headphone/Audio Out jack**

The stereo headphone jack (3.5mm) is used to connect the system's audio out signal to amplified speakers or headphones. Using this jack automatically disables the built-in speakers.

### 3 **Microphone jack**

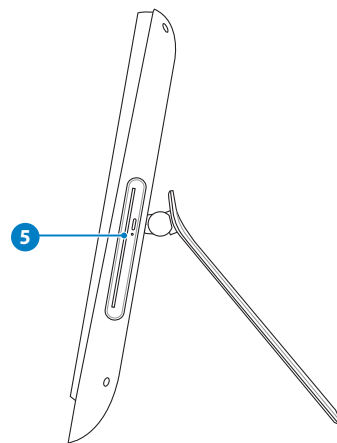
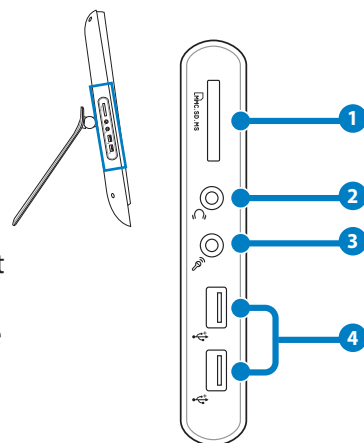
The microphone jack is designed to connect a microphone used for video conferencing, voice narrations, or simple audio recordings.

### 4 **USB port**

The Universal Serial Bus (USB) port is compatible with USB devices such as keyboards, mouse devices, cameras, and hard disk drives.

### 5 **Optical Drive**

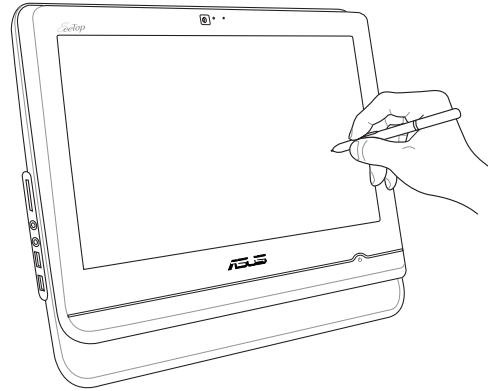
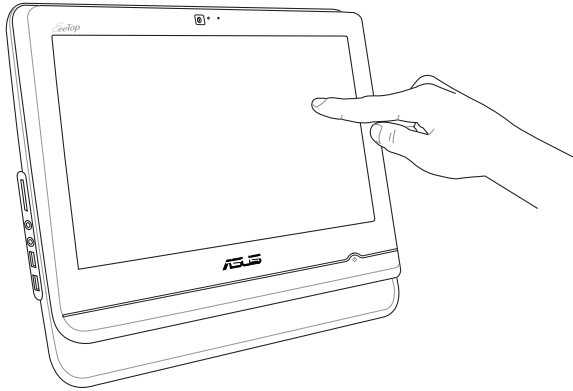
The system comes in various models with different optical drives, tray-in type or slot-in type. The built-in optical drive may support compact discs (CD) and/or digital video discs (DVD), Blu-ray DVD, and may have recordable (R) or re-writable (RW) capabilities. See the marketing specifications for details on each model.



## Using the touch screen (on selected models)

EeeTop PC brings digital life to your fingertips. With a few touches or the use of the stylus pen, you can make EeeTop PC work at your command. Your touch functions like a mouse device:

- Touch = left-click on the mouse
- Touch and hold = right-click on the mouse

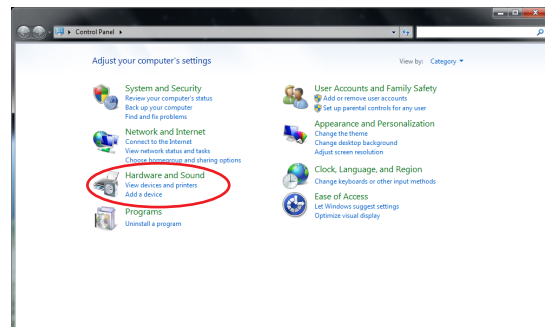


- The touch-enabled screen is available on selected models.
- The Stylus function is only available on selected models with touch-enabled screens.

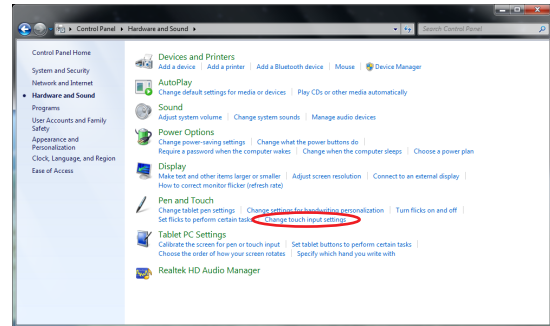
## Showing the touch pointer

The touch pointer, virtual mouse, helps you use the touch-enabled screen more conveniently. To show the touch pointer

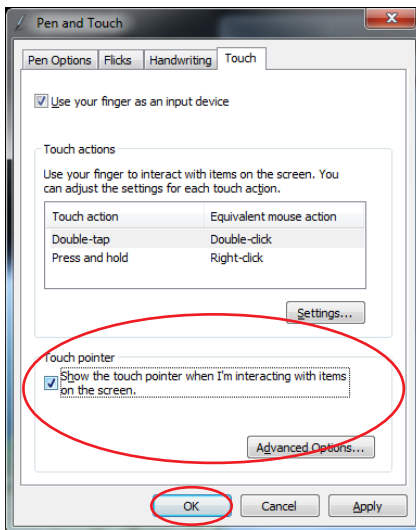
1. From the Windows® desktop, click **Start** > **Control Panel** and click **View Devices and Printer**.



2. Click **Change touch input settings**.



3. Click the **Touch** tab on the top and click the box before **Show the touch pointer when I'm interacting with items on the screen**. Click **OK** to finish the configuration.



4. You will see a virtual mouse on the screen when you touch the screen.



## Cleaning the touch screen

The touch screen requires periodic cleaning to achieve the best touch sensitivity. Keep the screen clean from foreign objects or excessive dust accumulation. To clean the screen:

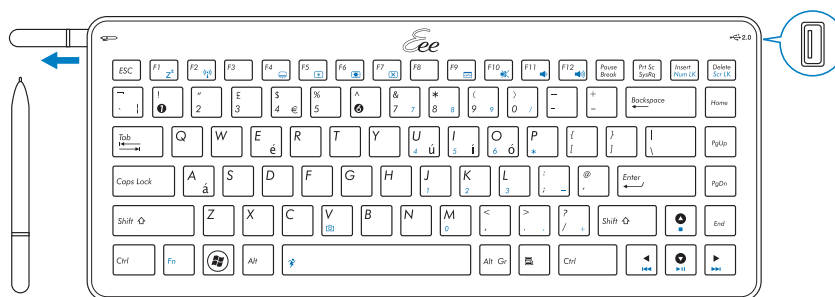
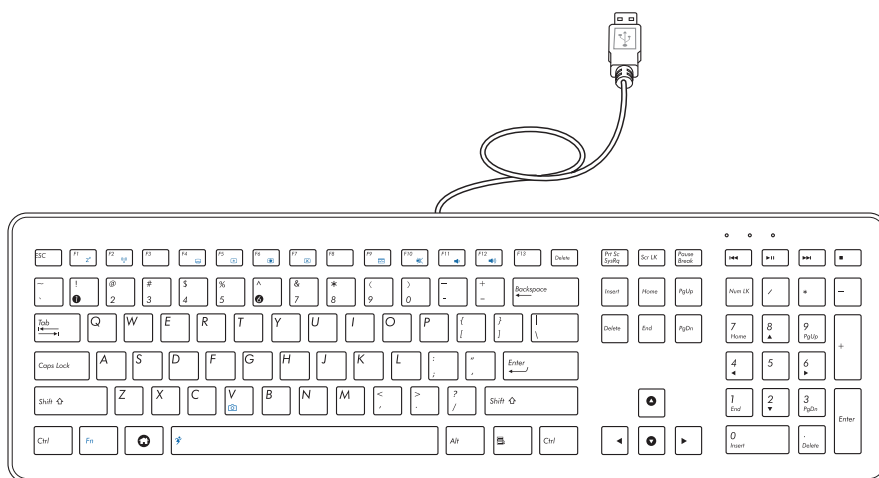
- Turn off the system and disconnect the power cord from the wall.
- Spray a small amount of a household glass cleaner onto the supplied cleaning cloth and gently wipe the screen surface.
- Do not spray the cleaner directly on the screen.
- Do not use an abrasive cleaner or a coarse cloth when cleaning the screen.

## Using the keyboard

Your EeeTop PC comes with a wired or wireless keyboard that facilitates your control of the system. For selected models, on the right side of the keyboard is an extra USB port, and on the left is where the stylus pen is stored. Press the stylus pen and it will eject.



- The following keyboard illustration is for reference only. Actual product specifications may vary with territories.
- The Stylus function is only available on selected models with touch-enabled screens.



## Function keys

The following table defines the colored function keys on the keyboard. To access the colored commands, hold the **Function key** while pressing a key with a colored command.



The actual colored function keys and supported commands may vary with models.



**Fn + F1:** Places the system in suspend mode.



**Fn + F2:** Toggles the internal wireless LAN ON or OFF. When enabled, the corresponding wireless LAN LED lights up. Windows® software settings are necessary to use the wireless LAN.



**Fn + F4:** Toggles the front LED light ON and OFF. (on selected models)



**Fn + F5:** Decreases the display brightness.



**Fn + F6:** Increases the display brightness.



**Fn + F7:** Toggles the LCD display ON and OFF.



**Fn + F10:** Toggles the speakers ON and OFF (only in Windows® OS).



**Fn + F11:** Decreases the speaker volume (only in Windows® OS).



**Fn + F12:** Increases the speaker volume (only in Windows® OS).



**Fn + Space (Super Hybrid Engine key):** Switches among different power saving modes. The selected mode is shown on the display.

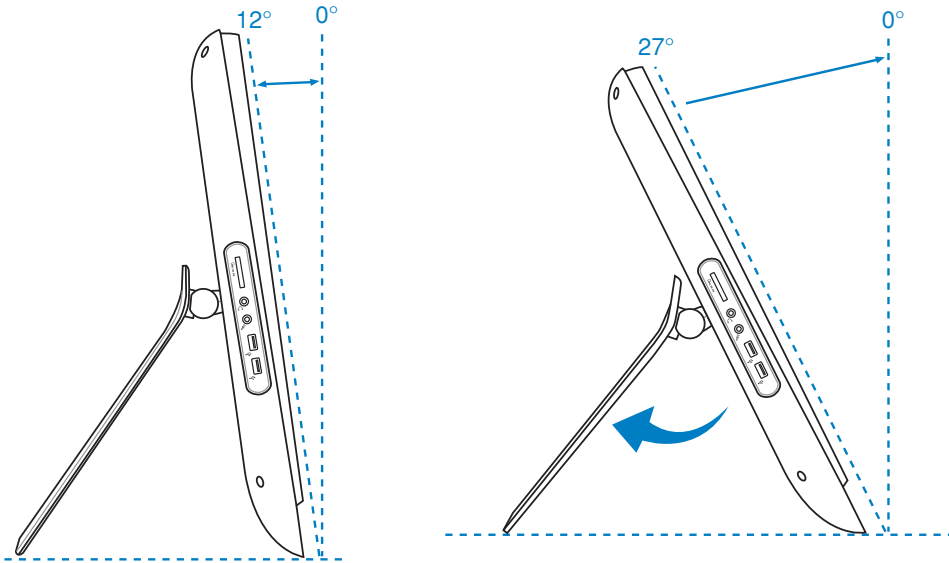


**Fn + V:** Toggles the built-in webcam ON and OFF.

## Positioning your EeeTop PC

### Placing on the desktop

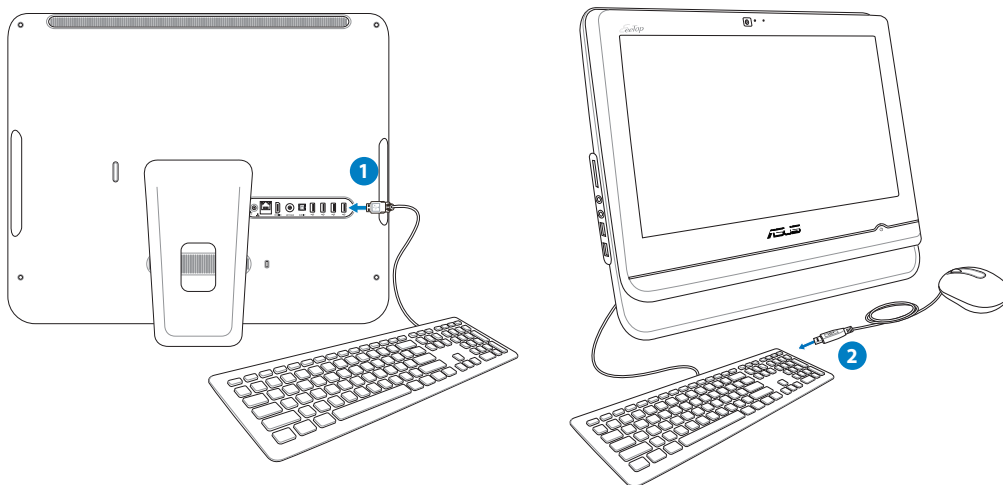
Place your EeeTop PC on a flat surface such as a table or desk, and pull the stand open until it snaps in place. Then, tilt the display panel to an angle of between 12 and 27 degrees from an upright position.



# Setting up your EeeTop PC

## Connecting the wired keyboard and mouse

Connect the keyboard to the **USB** port on the rear panel (❶). You may also connect the keyboard to the **USB** port on the left side if the keyboard cable is not long enough. Then, connect the mouse to the keyboard **USB** port (❷).

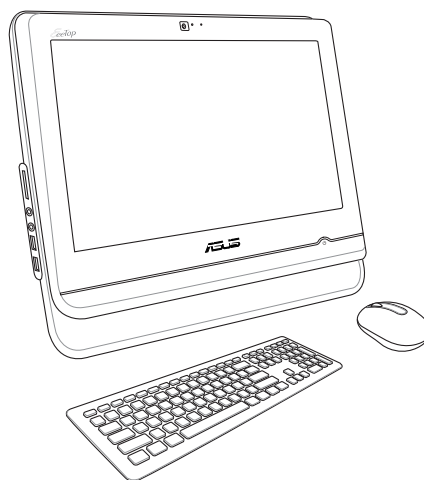


## Connecting the wireless keyboard and mouse

1. Install batteries to the wireless keyboard and mouse.
2. Push the buttons at the back of both the keyboard and mouse to connect with the EeeTop PC.
3. You can begin using the wireless keyboard and mouse.

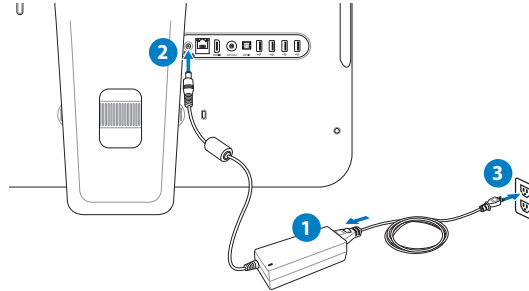


The illustrations above are for reference only. Actual appearances and specifications (wired or wireless) of the keyboard and mouse may vary with territories.

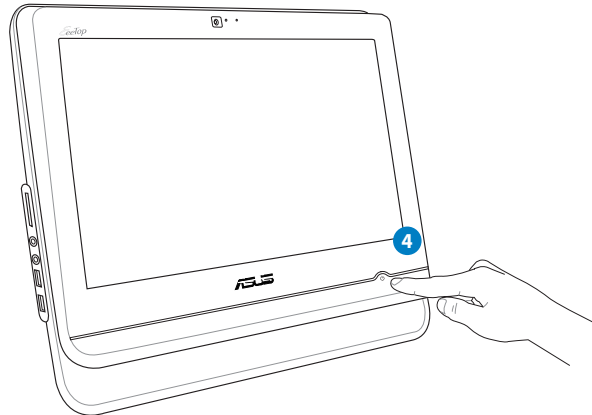


## Powering on the system

Connect the supplied AC adapter to the **DC IN** jack on the rear panel (1 2 3) and then press the **Power switch** on the front panel (4) to turn on the system.



**WARNING!** DO NOT connect the AC power cord to an AC outlet prior to connecting the DC plug to the system. Doing so may damage the AC-DC adapter.





## Powering off

- To power off the LCD display, press the **Fn + F7 key**   on the keyboard. The system is still running.



The colored key command is available on selected models.

- To put the system into suspend mode, press the **Power switch**  on the front panel. To bring the system back to the OS, press the **Power switch** again, click the mouse, touch the display, or press any key on the keyboard.
- To shut down the system completely, follow the normal Windows shutdown process or press and hold the **Power switch**  for five seconds.



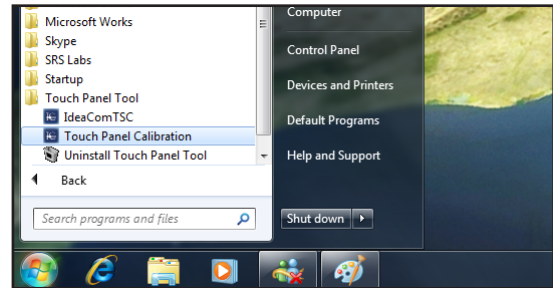
## Calibrating the screen

EeeTop PC comes with the following software tool that allows you to adjust touch screen precision.



The touch-enabled screen is available on selected models.

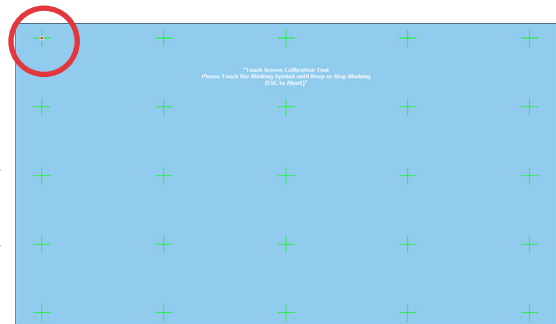
1. From the Windows® desktop, click **Start** > **All Programs** > **Touch Panel Tool** > **Touch Panel Calibration**.




2. Touch and hold the center of the onscreen mark at each location and the screen will adjust automatically.




Press the **Esc** key on the keyboard to end the calibration process.



## Configuring a wireless connection

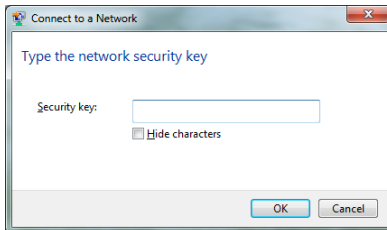
1. Click the wireless network icon with an orange star  in the Windows® Notification area.
2. Select the wireless access point you want to connect to from the list and click **Connect** to build the connection.




If you cannot find the desired access point, click the **Refresh** icon  on the upper right corner to refresh and search in the list again.




Enter the network security key when connecting to a security-enabled network.



3. After a connection has been established, the connection is shown on the list.
4. You can see the wireless network icon  in the Notification area.

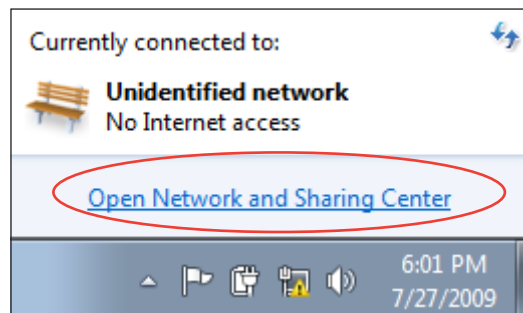
## Configuring a wired connection

### Using a static IP

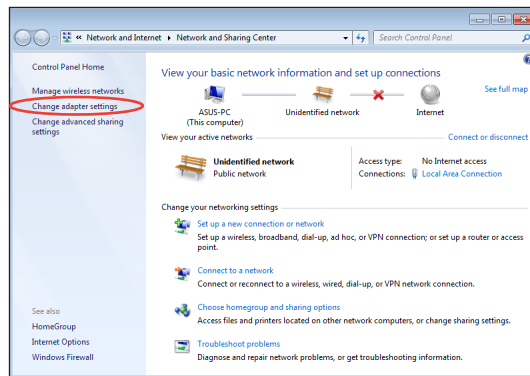
1. Click the network icon with a yellow warning triangle  in the Windows® Notification area and select **Open Network and Sharing Center**.



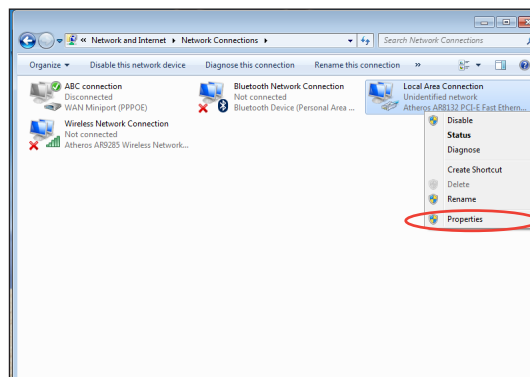
Ensure that you have connected the LAN cable to the EeeTop PC.



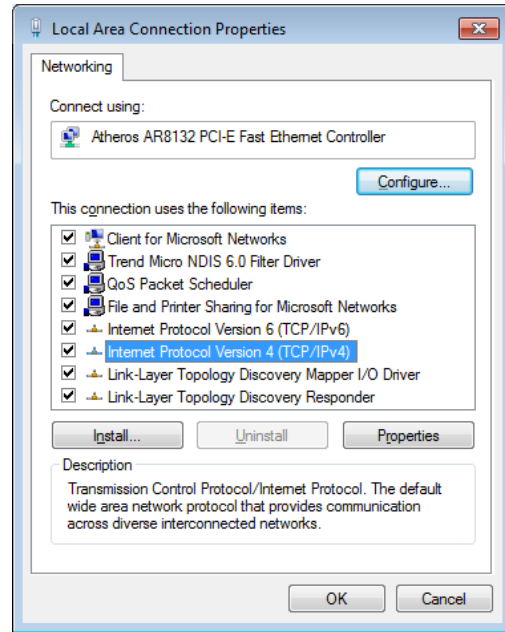
2. Click **Change adapter settings** in the left pane.



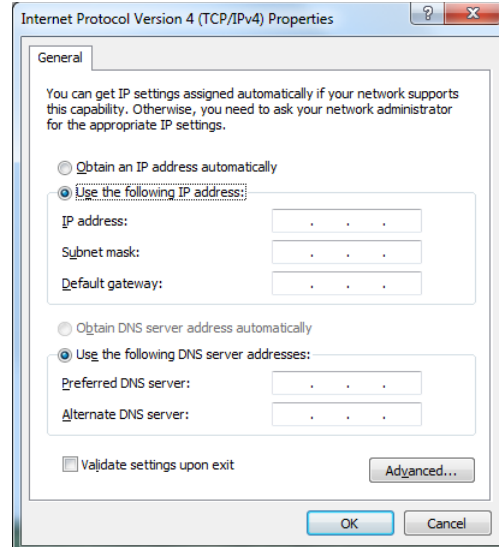
3. Right-click **Local Area Connection** and select **Properties**.



4. Click **Internet Protocol Version 4(TCP/IPv4)** and click **Properties**.

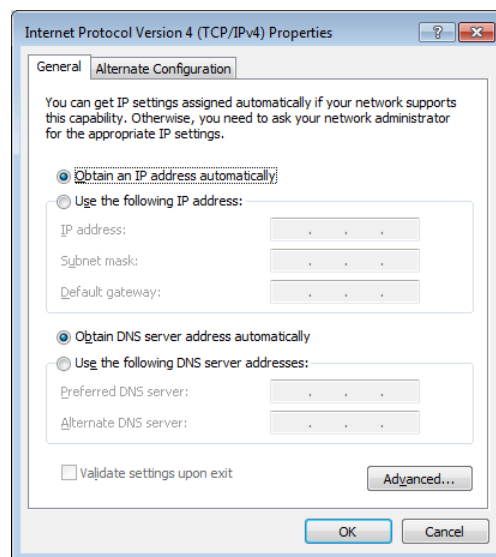


5. Select **Use the following IP address**.
6. Enter your **IPv4 address**, **Subnet prefix length**, and **Default gateway**.
7. If needed, enter the **Preferred DNS server** address.
8. After entering all the related values, click **OK** to finish the configuration.



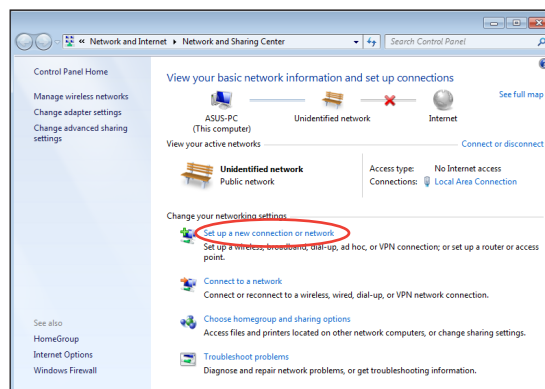
## Using a dynamic IP (PPPoE)

1. Repeat steps 1–4 in the previous section.
2. Select **Obtain an IP address automatically** and click **OK**.

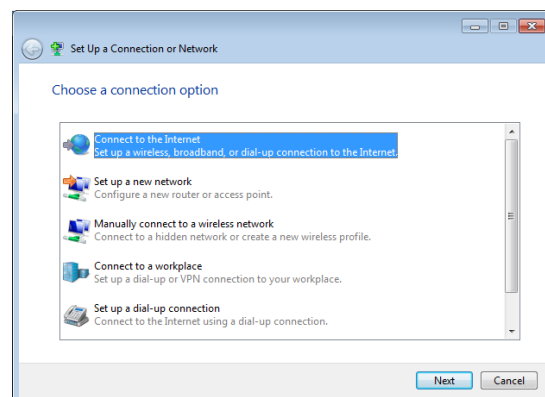


*(Continue the following steps if using PPPoE)*

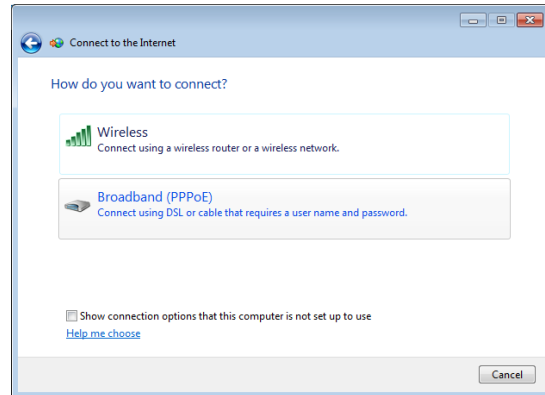
3. Return to the **Network and Sharing Center** and then click **Set up a new connection or network**.



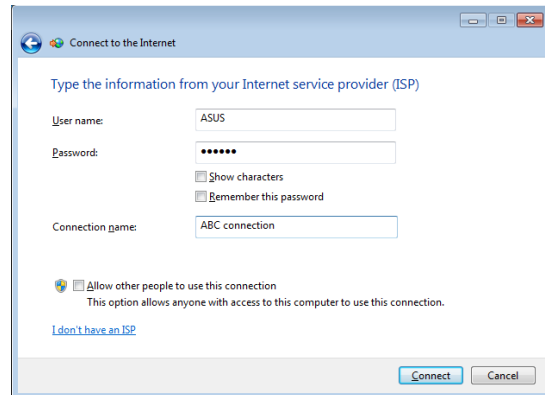
4. Select **Connect to the Internet** and click **Next**.



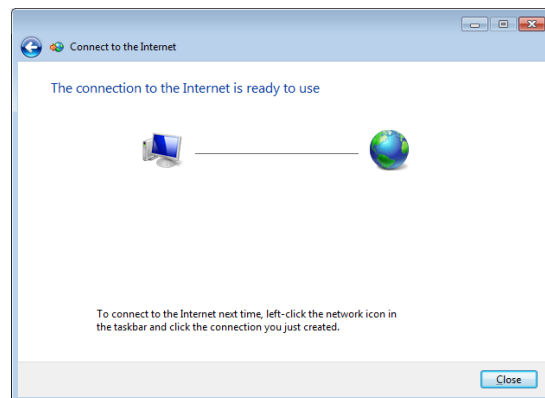
5. Select **Broadband (PPPoE)** and click **Next**.



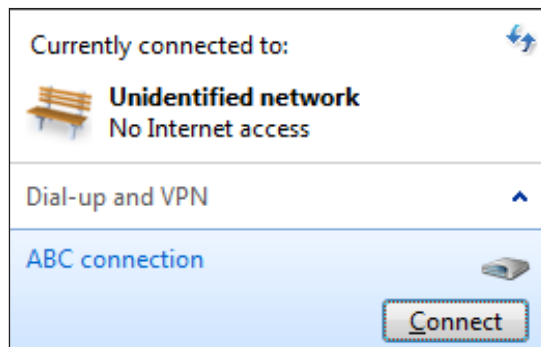
6. Enter your User name and, Password, and Connection name. Click **Connect**.



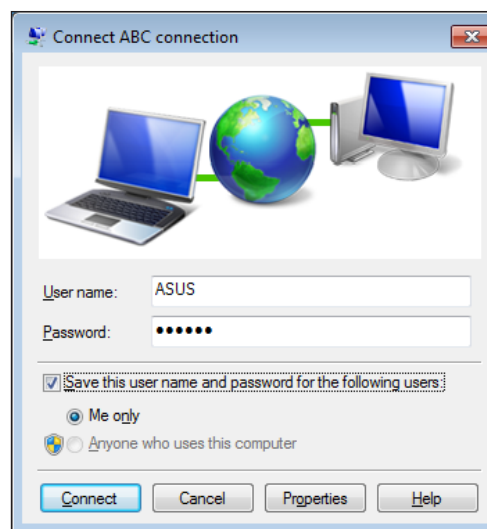
7. Click **Close** to finish the configuration.



8. Click the network icon in the notification area and click the connection you just created.



9. Enter your user name and password. Click **Connect** to connect to the Internet.



## Configuring the audio output

EeeTop PC supports different types of audio configurations. Set up the system using stereo speakers.

### Speaker configurations

Set up the system with the following speaker configurations:

Name	Speaker system
2-channel (stereo)	Left speaker and right speaker.

Audio jack	Headphones/2-channel
	Audio Out
	Mic In




A stereo speaker set is a left-right, two channel speaker system. A multi-channel audio speaker has a left-right front and left-right rear (surround) channel.

### Connecting to speakers

Refer to the table below for the audio jacks on the left panel and their functions.

*For stereo speakers or headphones*

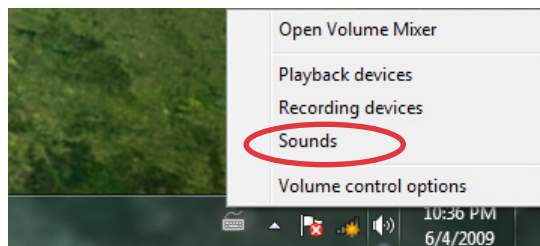
Audio jack	Description
	Connects to stereo speakers or headphones.



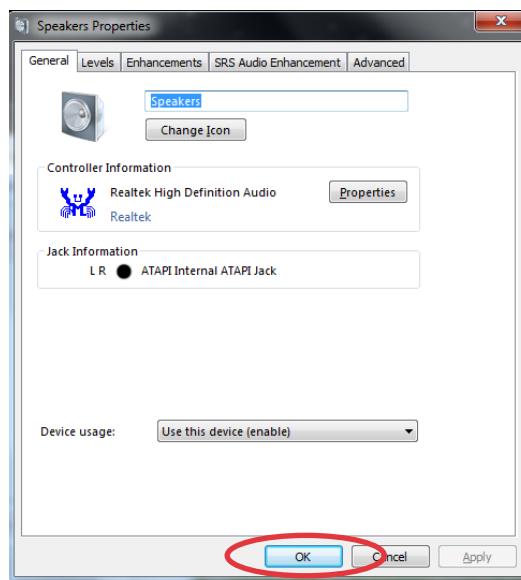
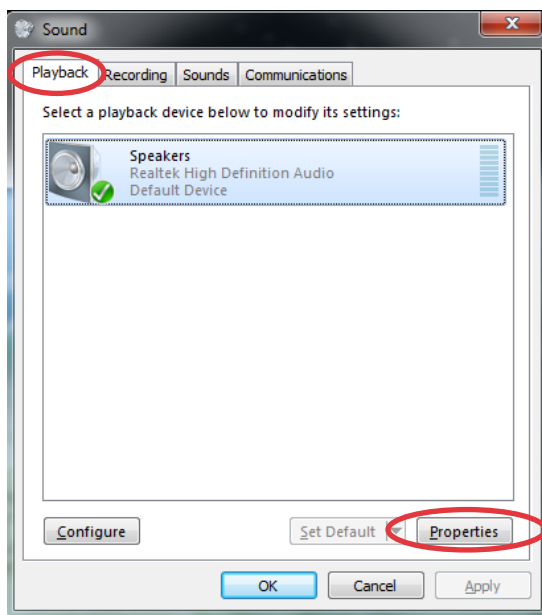
## Configuring audio output settings

After connecting a speaker system to your EeeTop PC, follow the steps below to configure the speaker settings:

1. Right-click the speaker icon in the Windows® notification area and click **Sounds**.



2. Select a playback device and click **Properties** to configure the settings.
3. Do the advanced configurations, such as adjusting the speaker level and output rate. Click **OK** to finish the configurations.



# Recovering your system

## Using the support DVD

The support DVD includes an image of the operating system installed on your system at the factory. The support DVD provides a comprehensive recovery solution that quickly restores your system to its original working state, provided that your hard disk drive is in good working order. Before using the support DVD, copy your data files (such as Outlook PST files) to a USB device or to a network drive and make note of any customized configuration settings (such as network settings).

1. Turn on your EeeTop PC and press <Esc> to enter the **Please select boot device** menu.
2. Insert the support DVD into the optical drive and select the optical drive ("DVDROM: XXX") as the boot device. Press <Enter> and then press any key to continue.
3. The **ASUS Recovery CD/DVD** window appears. Select where to install a new system. Options are:

### Recover system to a partition

This option will delete only the partition you select from below, allowing you to keep other partitions. Select a partition and click **NEXT**.

### Recover system to entire HD

This option will delete all partitions from your hard disk drive and restore factory settings. Select and click **Yes**.



We highly recommend that you select **Recover system to entire HD** to retain the default recovery partition for the function described on the next page.

4. Follow the onscreen instructions to complete the recovery process.



You will lose all your data during the system recovery. Ensure that you make a backup of it before recovering the system.

5. After the system recovery is completed, restart the computer.
6. Set up your language, time zone, keyboard, computer name, and user name to enter the Windows® OS.



This support DVD is for EeeTop PC only. DO NOT use it on other computers. Visit the ASUS website at [www.asus.com](http://www.asus.com) for any updates.

## Using the hidden partition

The recovery partition includes an image of the operating system, drivers, and utilities installed on your system at the factory. The recovery partition provides a comprehensive recovery solution that quickly restores your system's software to its original working state, provided that your hard disk drive is in good working order. Before using the recovery partition, copy your data files (such as Outlook PST files) to a USB device or to a network drive and make note of any customized configuration settings (such as network settings).

1. Turn on your computer.
2. When the EeeTop logo appears, press <F9> (requires a recovery partition).
3. The **ASUS Recovery CD/DVD** window appears. Select **Recover system to a partition**.
4. Follow the onscreen instructions to complete the recovery process.



You will lose all your data during the system recovery. Ensure that you make a backup of it before recovering the system.

5. After the system recovery is completed, restart the computer.
6. Set up your language, time zone, keyboard, computer name, and user name to enter the Windows® OS.

Manufacturer	ASUSTek COMPUTER INC.
Address, City	No. 150, LI-TE RD., PEITOU, TAIPEI 112, TAIWAN R.O.C
Country	TAIWAN
Authorized Representative in Europe	ASUS COMPUTER GmbH
Address, City	HARKORT STR. 21-23, 40880 RATINGEN
Country	GERMANY