

ASUS[®]

Vintage-S800

Barebone System

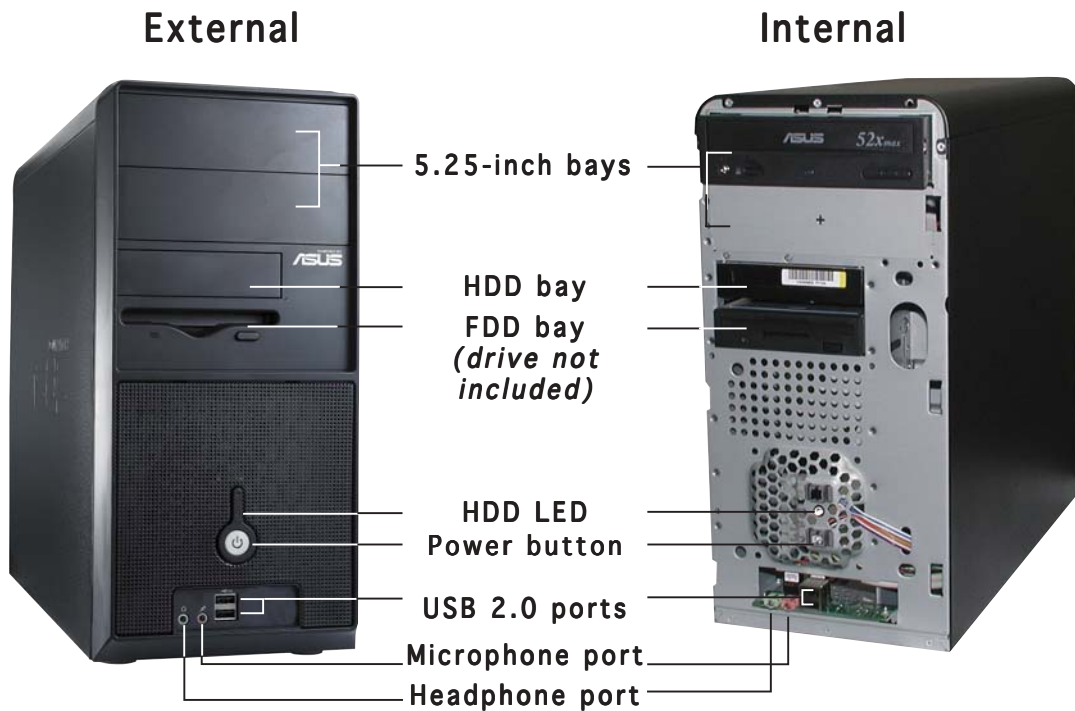
Quick Start Guide



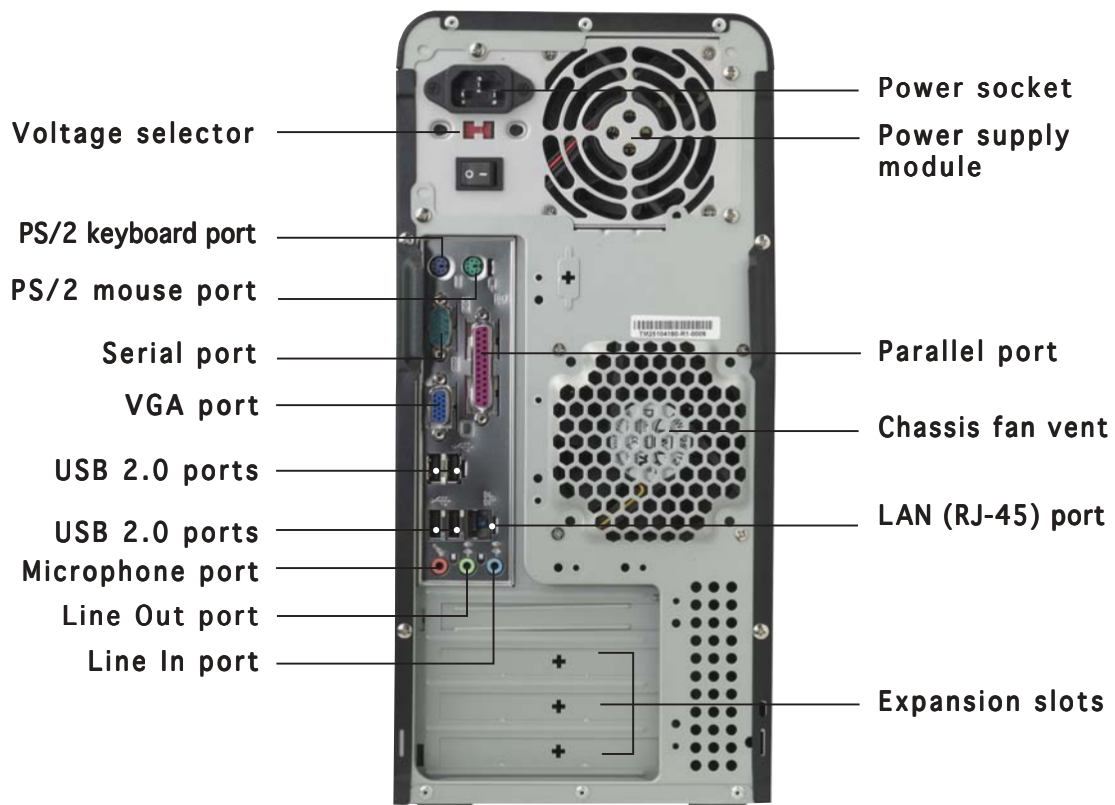
Front panel features



NOTE. The photos in this guide are for reference only. For detailed information on your system's specifications, refer to the user guide.



Rear panel features

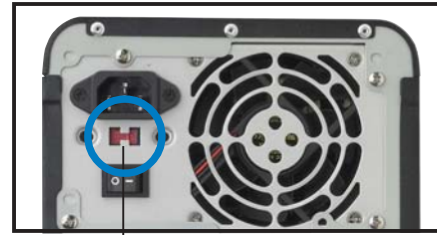


Voltage selector

The switching power supply that came with the system has a voltage selector switch below the power socket. Use this switch to select the appropriate voltage according to the voltage supply in your area.

If the voltage supply in your area is 100-127V, set the switch to 115V.

If the voltage supply in your area is 200-240V, set the switch to 230V.

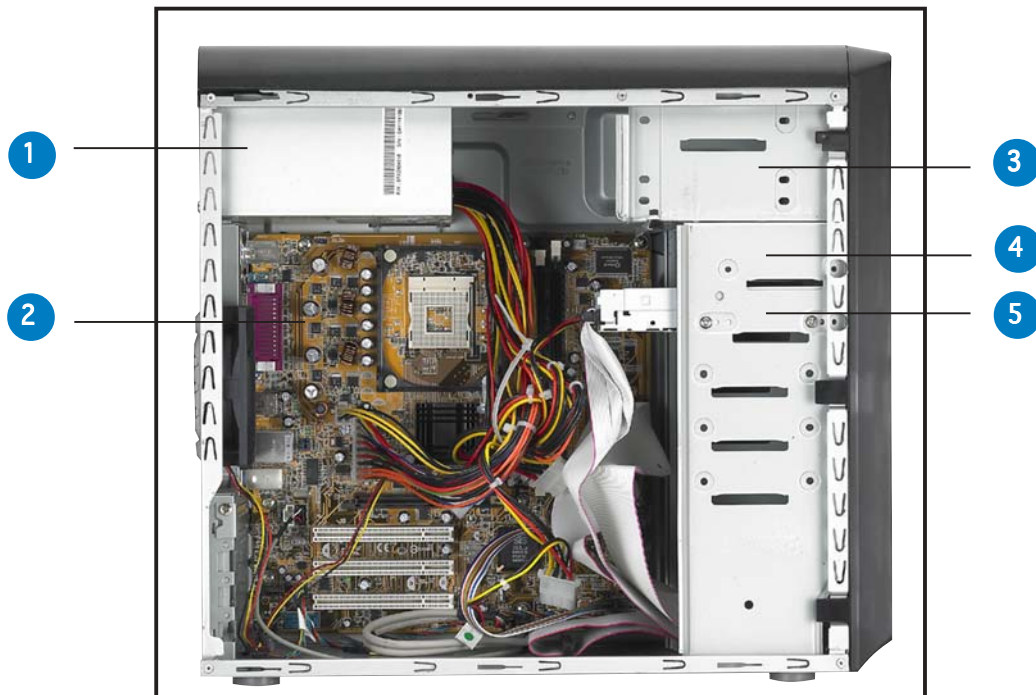


115V/230V
Voltage selector

Internal components

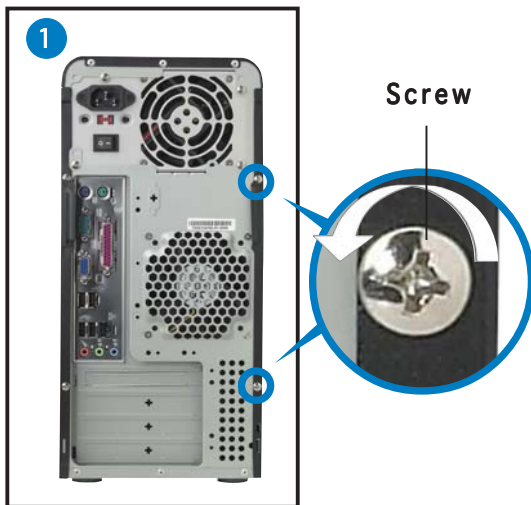


NOTE. The system may come with either a PFC (Power Factor Correction) or non-PFC power supply.



1. PFC/Non-PFC power supply
2. Motherboard
3. Two 5.25" optical drive bays
4. 3.5" HDD drive bay
5. 3.5" Floppy drive bay (drive in photo not included)

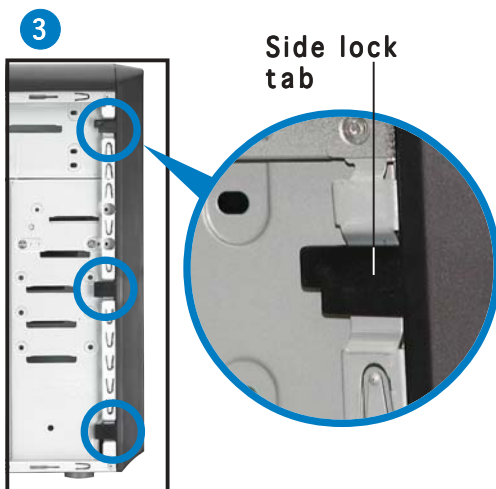
Removing the side plate and front cover



Remove the two screws on the rear panel.



IMPORTANT. Remove only the left side plate.



Release the side lock tabs.



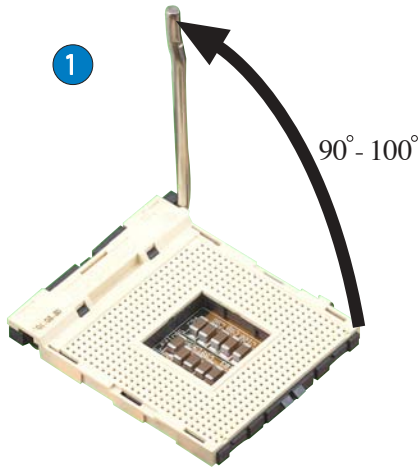
Hinge-like tab

Swing the left edge of the front panel outward, then unhook the hinge-like tabs from the holes on the right side of the front panel.

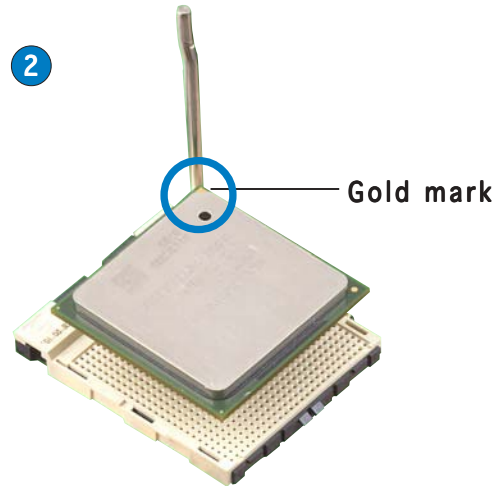
Installing a CPU



CAUTION. Incorrect installation of the CPU into the socket may bend the pins and severely damage the CPU!

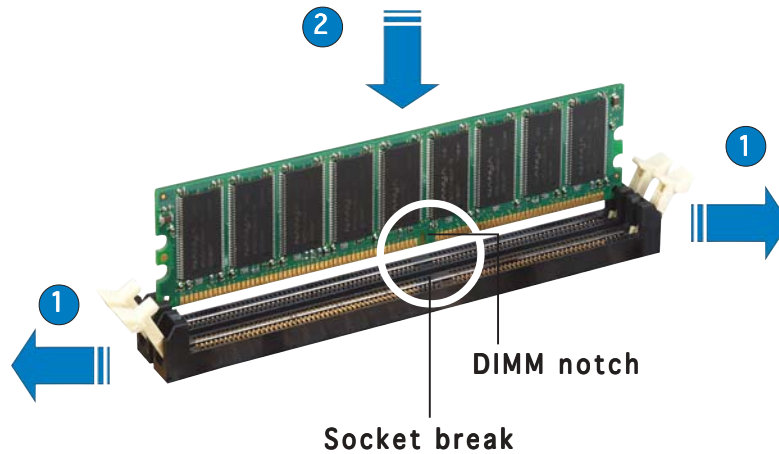


Lift up the socket lever to a 90°-100° angle.



Match the gold mark on the CPU to the base of the socket lever.

Installing system memory

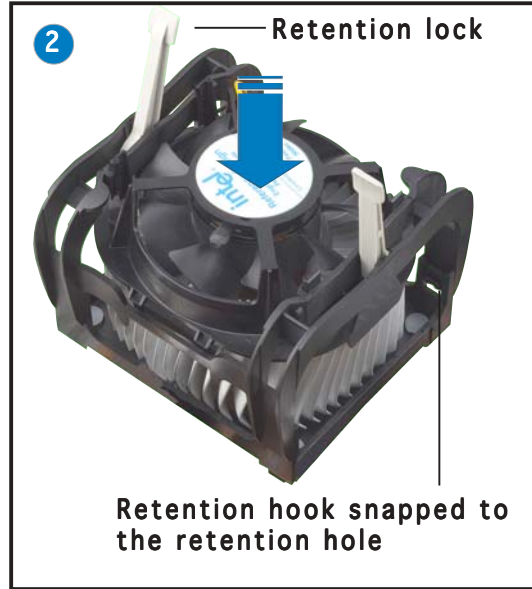
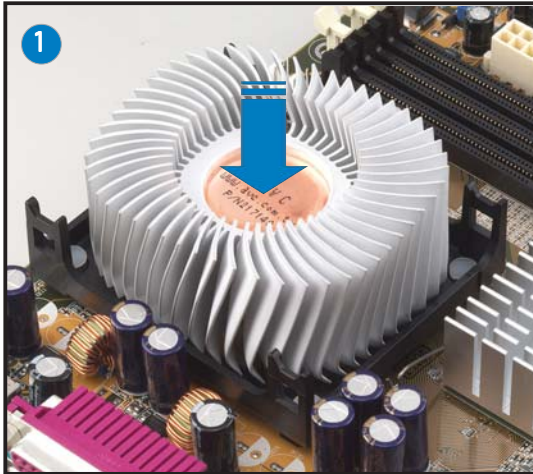


CAUTION. A DDR DIMM is keyed with a notch so that it fits in only one direction. DO NOT force a DIMM into a socket to avoid damaging the DIMM.

Installing the fan and heatsink assembly



NOTE. Your boxed Intel® Pentium® 4 processor package should come with installation instructions for the CPU, heatsink, and the retention mechanism. If the instructions in this section do not match the CPU documentation, follow the latter.

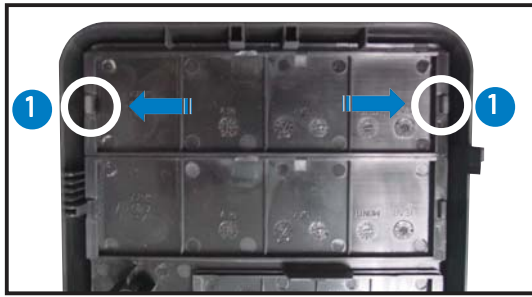


NOTE: When secure, the retention locks should point to opposite directions.

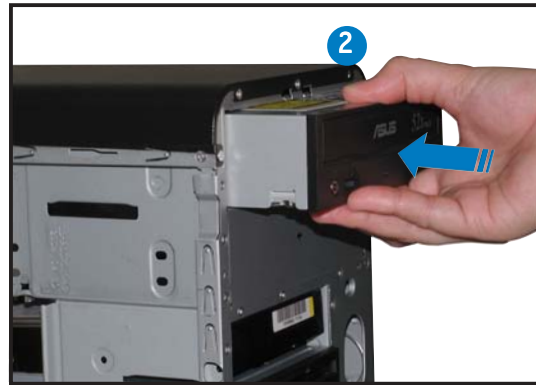


IMPORTANT. Do not forget to connect the CPU fan connector! Hardware monitoring errors can occur if you fail to plug this connector.

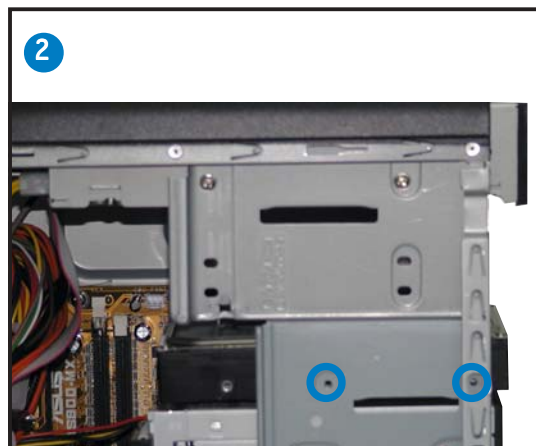
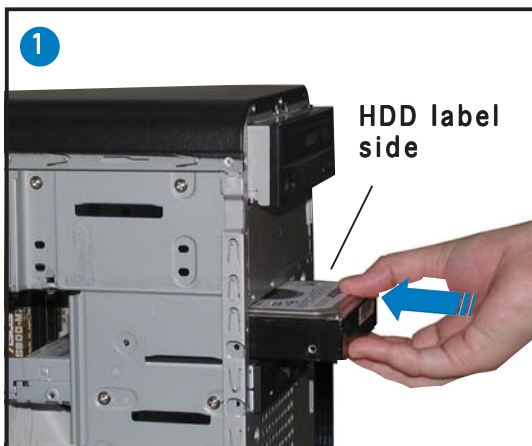
Installing an optical drive



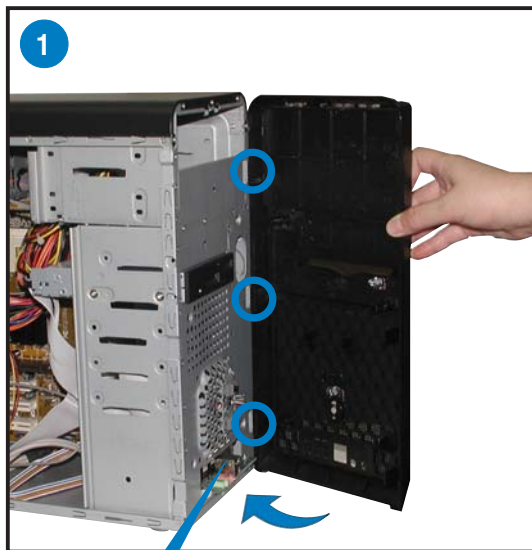
Remove the drive bay plate.



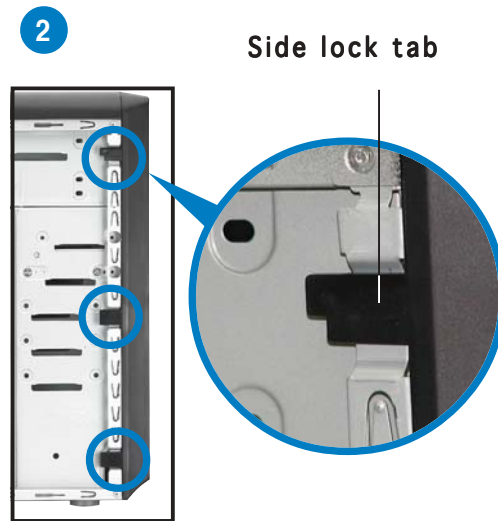
Installing a hard disk drive



Replacing the side plate and front cover



Hinge-like tab



Snap the side lock tabs to secure the front panel.

