

**ASUS<sup>®</sup>**

# Vintage-PE2

*Barebone System*

## Quick Installation Guide



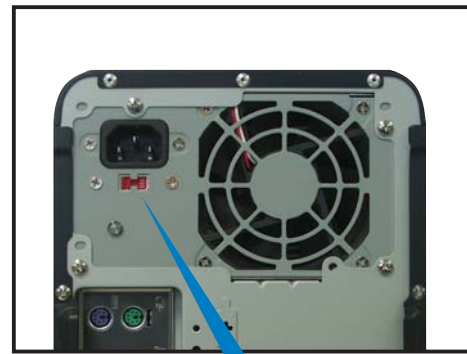


## Voltage selector

The switching power supply that came with the system has a voltage selector switch below the power socket. Use this switch to select the appropriate voltage according to the voltage supply in your area.

If the voltage supply in your area is 100-127 V, set the switch to 115 V.

If the voltage supply in your area is 200-240 V, set the switch to 230 V.



115 V/230 V  
Voltage  
selector



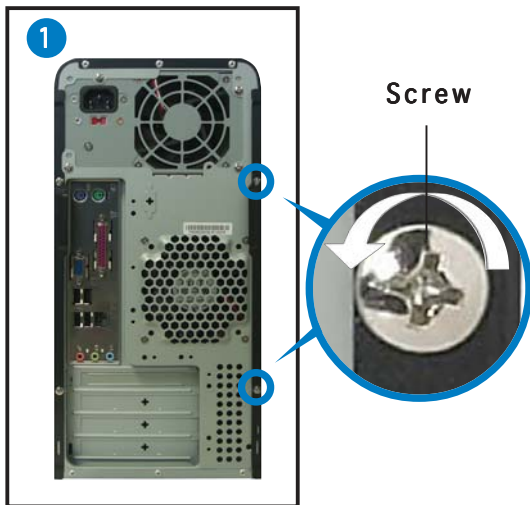
**CAUTION.** Setting the switch to 115 V in a 230 V environment will seriously damage the system!

## Internal components



1. PFC power supply
2. Motherboard
3. Two 5.25" optical drive bays
4. Hard disk drive bay
5. 3.5" Floppy drive bay
6. Hard disk drive bays

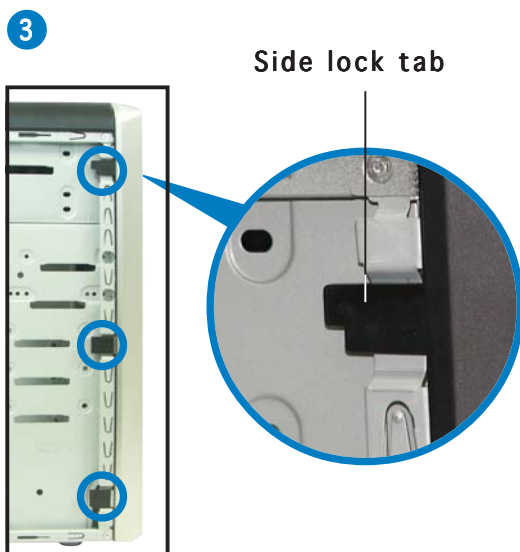
## Removing the side plate and front cover



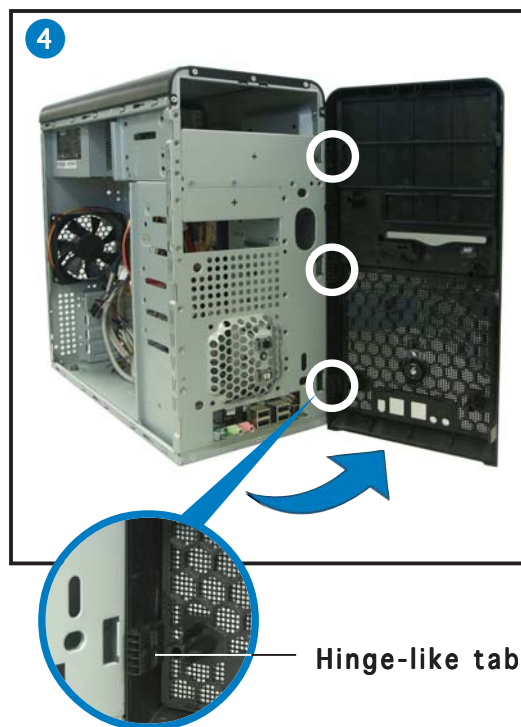
Remove the two screws on the rear panel.



**IMPORTANT.** Repeat steps 1 and 2 to remove the other side plate.



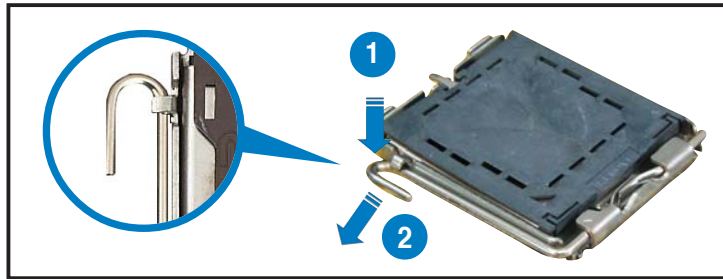
Release the side lock tabs.



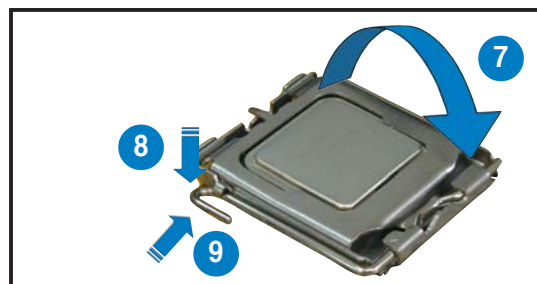
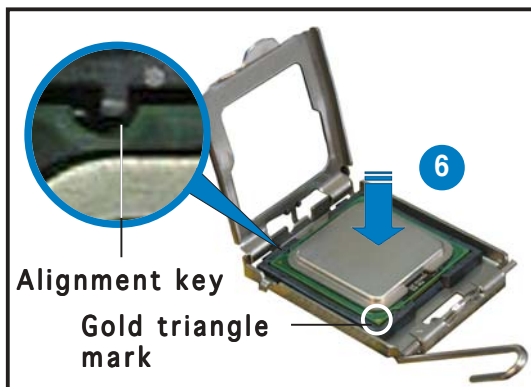
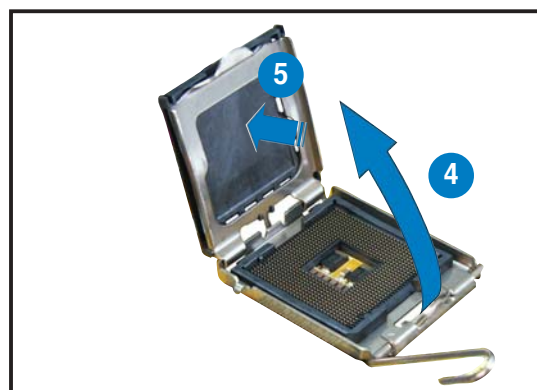
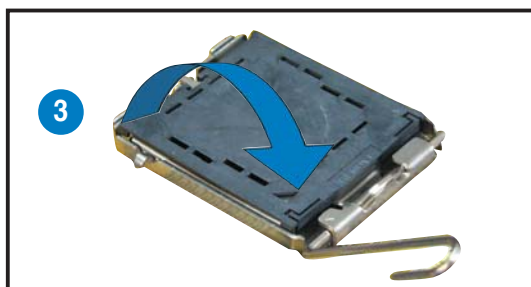
Swing the left edge of the front panel outward, then unhook the hinge-like tabs from the holes on the right side of the front panel.

## Installing a CPU

1. Press the load lever with your thumb.
2. Move it to the left until it is released from the retention tab.



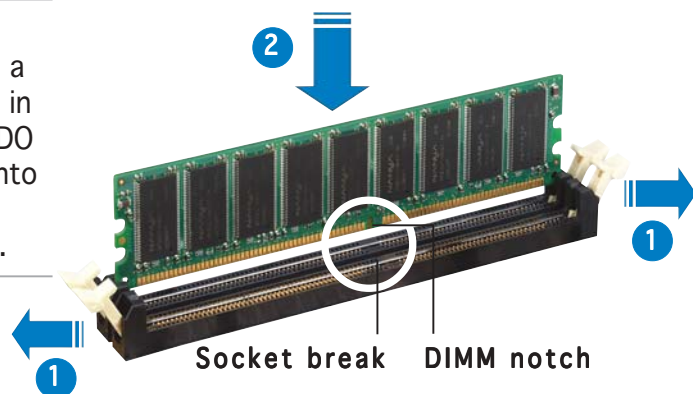
**CAUTION.** To prevent damage to the socket pins, do not remove the PnP cap unless you are installing a CPU.



## Installing system memory



**CAUTION.** A DDR DIMM is keyed with a notch so that it fits in only one direction. DO NOT force a DIMM into a socket to avoid damaging the DIMM.

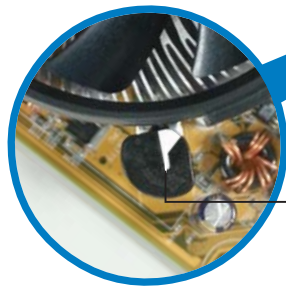
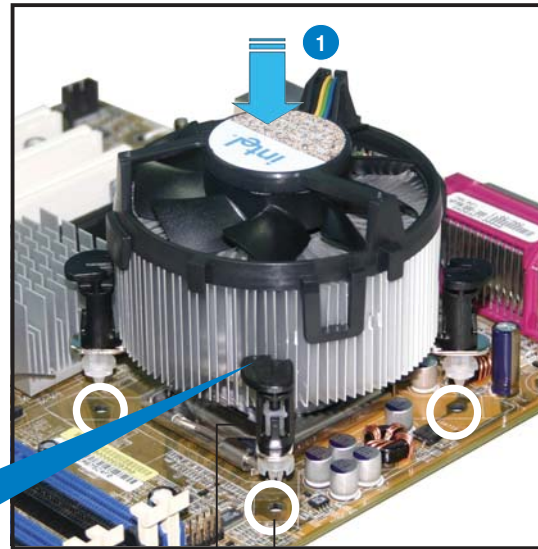


# Installing the fan and heatsink assembly

Place the heatsink on top of the installed CPU, making sure that the four fasteners match the holes on the motherboard.



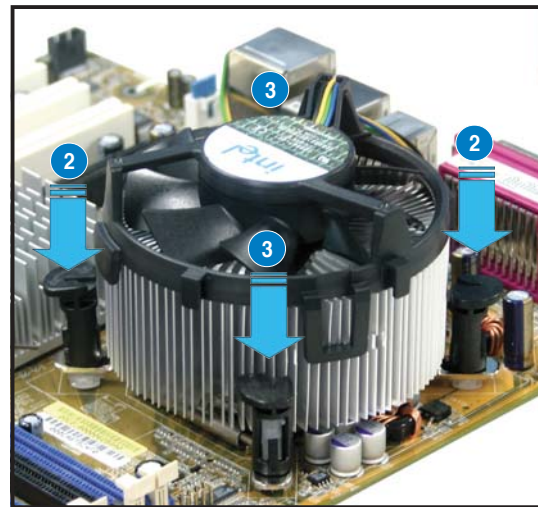
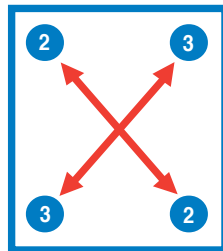
**NOTE.** Make sure to orient each fastener with the narrow end of the groove pointing outward. (The photo shows the groove shaded for emphasis.)



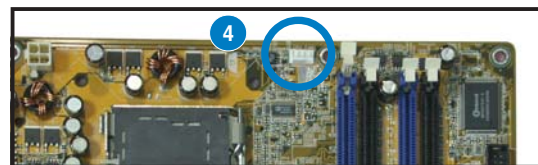
Narrow end of the groove

Motherboard hole  
Fastener

Push down two fasteners at a time in a diagonal sequence to secure the heatsink and fan assembly in place.

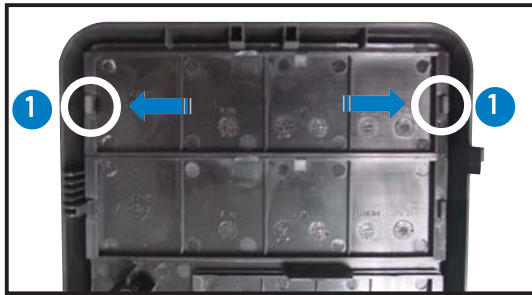


Connect the CPU fan cable to the connector on the motherboard labeled CPU\_FAN1.

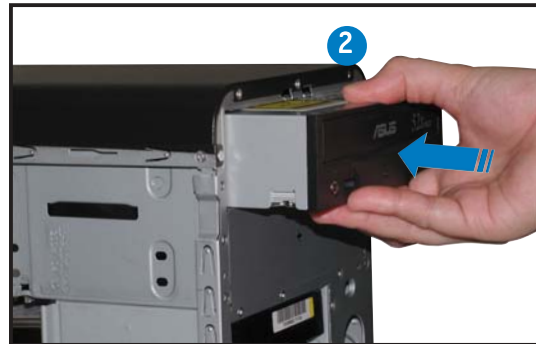


**IMPORTANT.** Do not forget to connect the CPU fan connector! Hardware monitoring errors can occur if you fail to plug this connector.

## Installing an optical drive



Remove the drive bay plate cover.



Audio cable  
IDE ribbon cable  
Red stripe to Pin 1  
Power cable

## Installing a hard disk drive

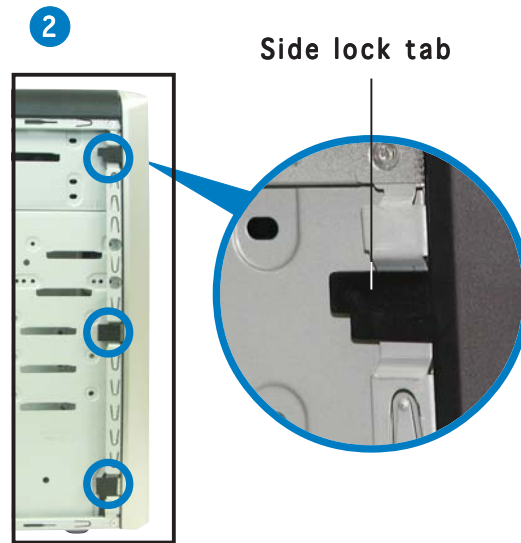
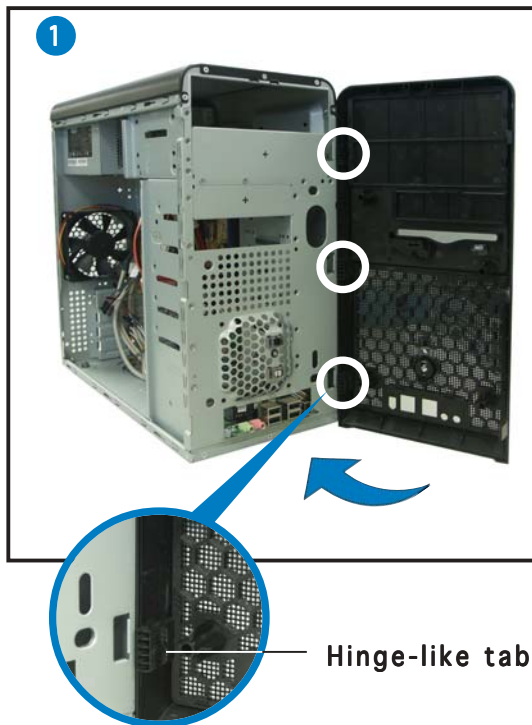


Connect the blue interface of the IDE ribbon cable to the primary IDE connector (blue connector labeled PRI\_IDE1) on the motherboard.

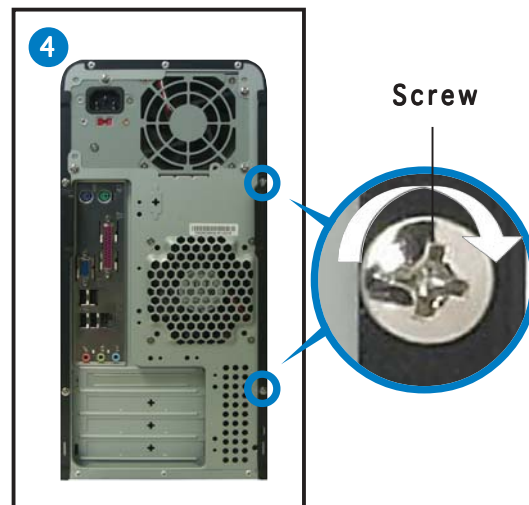


IDE ribbon cable  
Power cable

## Replacing the side plate and front cover



Snap the side lock tabs to secure the front panel.



Drive in two screws on the rear panel.



**IMPORTANT.** Repeat steps 3 and 4 to replace the other side plate.