



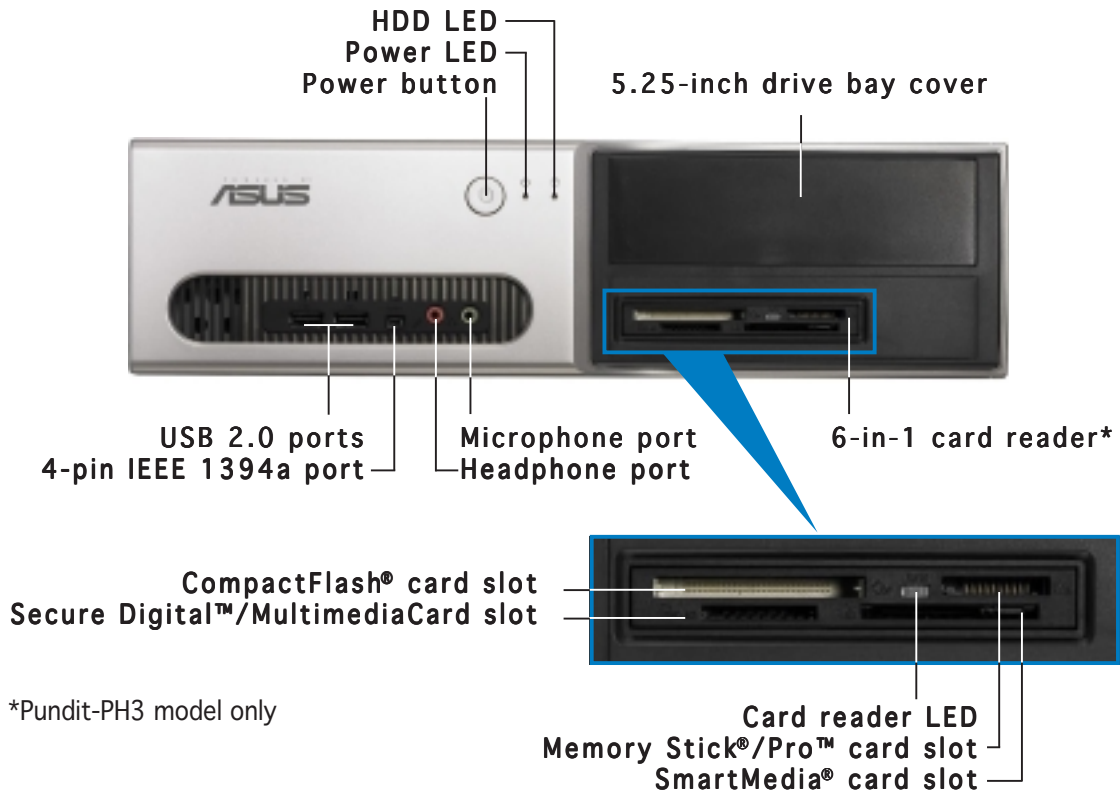
Pundit-PH3 Pundit-PE3

Barebone Systems

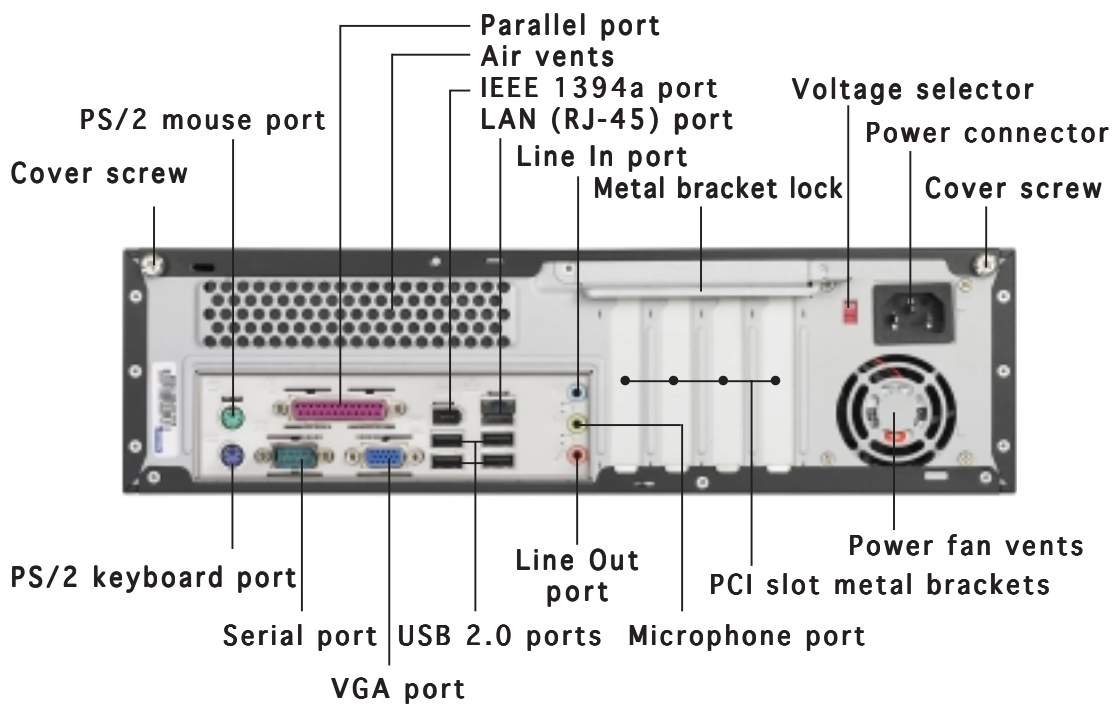
Quick Start Guide



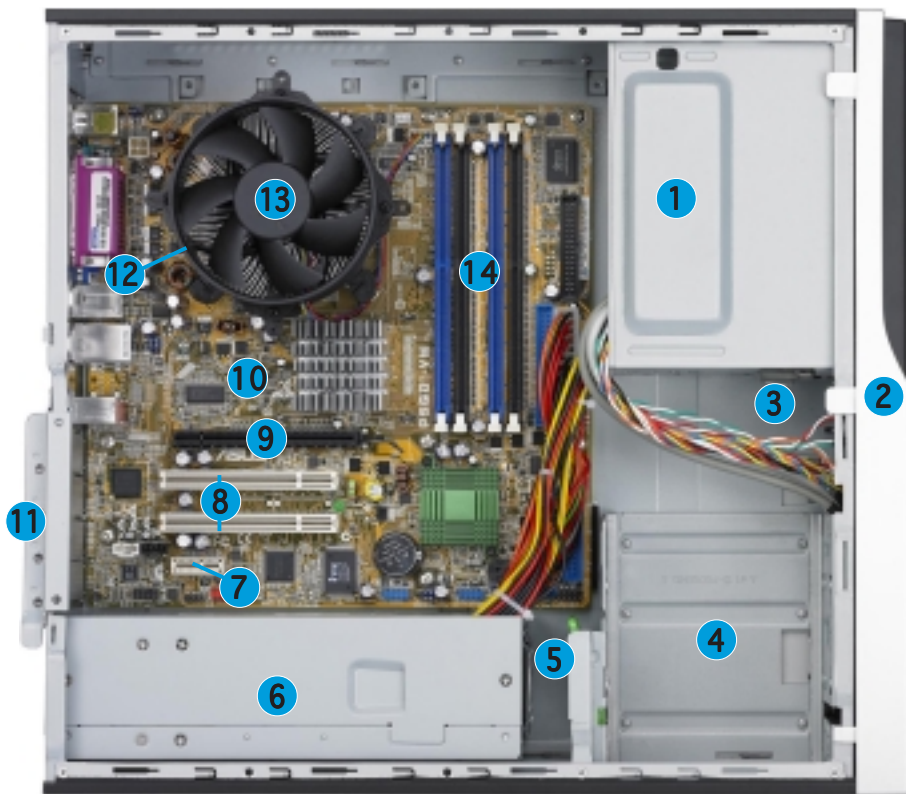
Front panel features



Rear panel features



Internal components



- | | |
|--------------------------------------|--|
| 1. 5.25-inch empty optical drive bay | 9. PCI Express x16 slot (on Pundit-PH3 model only) |
| 2. Front panel cover | 10. ASUS motherboard |
| 3. Optical drive lock | 11. Metal bracket lock |
| 4. Hard disk drive bays | 12. LGA775 socket (under the CPU fan and heatsink assembly) |
| 5. Hard disk drive lock | 13. CPU fan and heatsink assembly |
| 6. Power supply unit | 14. DIMM sockets |
| 7. PCI Express x1 slot | |
| 8. PCI slots | |

Selecting the voltage

The system's power supply unit has a 115 V/230 V voltage selector switch located beside the power connector. Use this switch to select the appropriate system input voltage according to the voltage supply in your area.

If the voltage supply in your area is 100-127 V, set the switch to 115 V.

If the voltage supply in your area is 200-240 V, set the switch to 230 V.

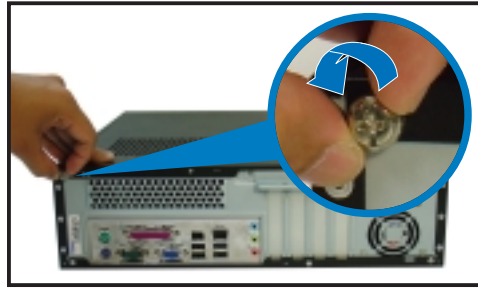


Removing the cover

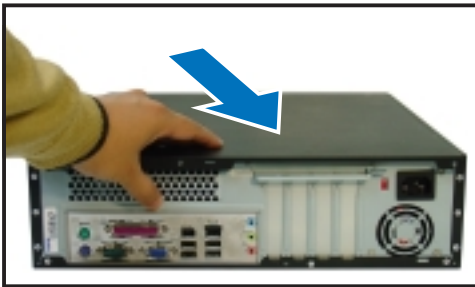
1. Locate two cover screws.



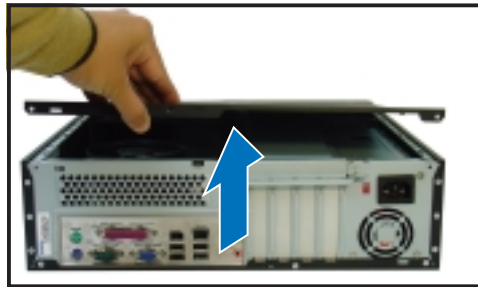
2. Remove the cover screws.



3. Pull the cover.



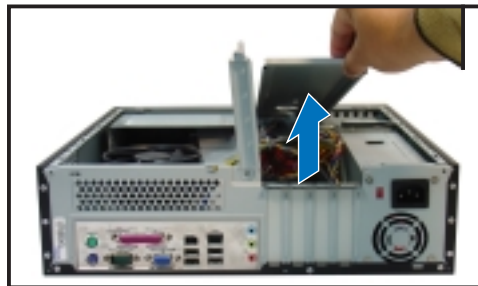
4. Lift the cover, then set aside.



5. Lift the expansion card lock to a 90°-100° angle.



6. Lift the chassis support bracket, then remove.

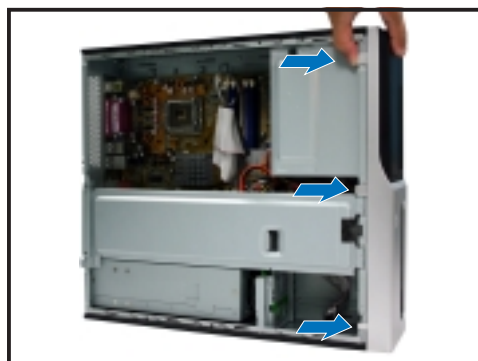


Removing the front panel assembly

1. Locate the front panel assembly hooks.



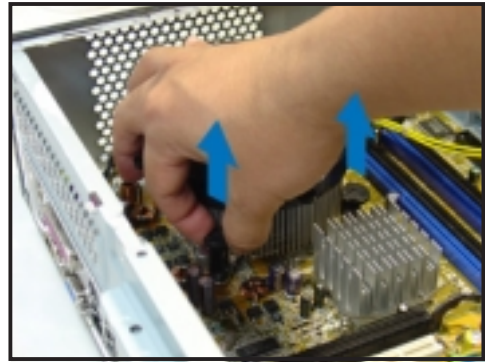
2. Pull the hooks outward to remove.



Installing a CPU

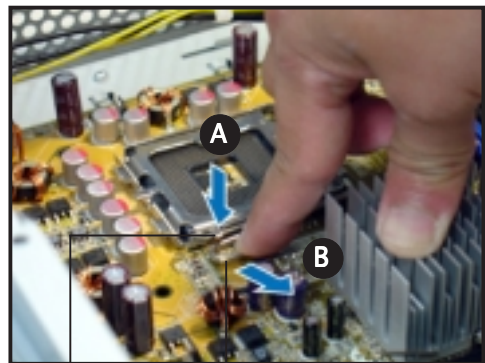
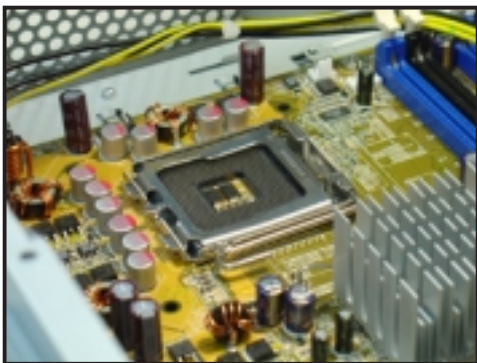
Removing the CPU fan and heatsink assembly

1. Disconnect the CPU fan cable.
2. Rotate the fasteners counterclockwise.
3. Pull two fasteners at a time to remove the fan and heatsink.
4. After removing the fan, rotate each fastener clockwise.



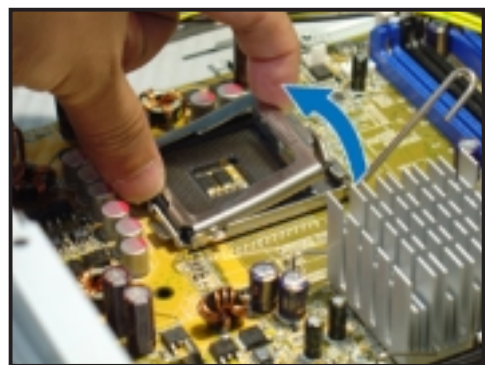
Installing the CPU

1. Locate the CPU socket.
2. Unlock the load lever.



Retention tab Load lever

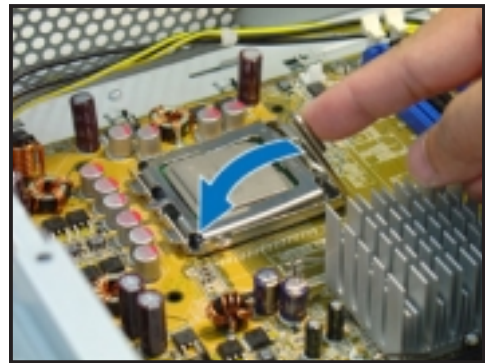
3. Lift the load lever.
4. Lift the load plate.



5. Install the CPU.

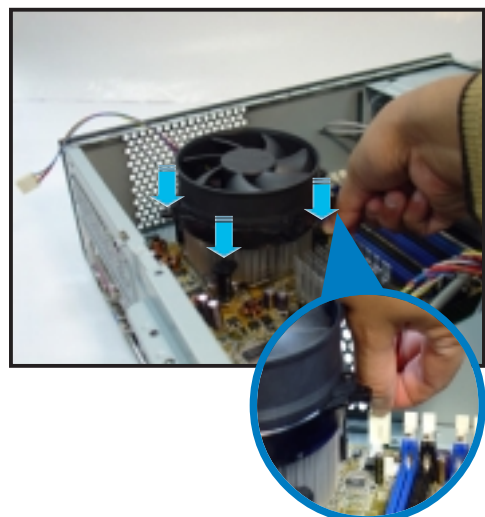
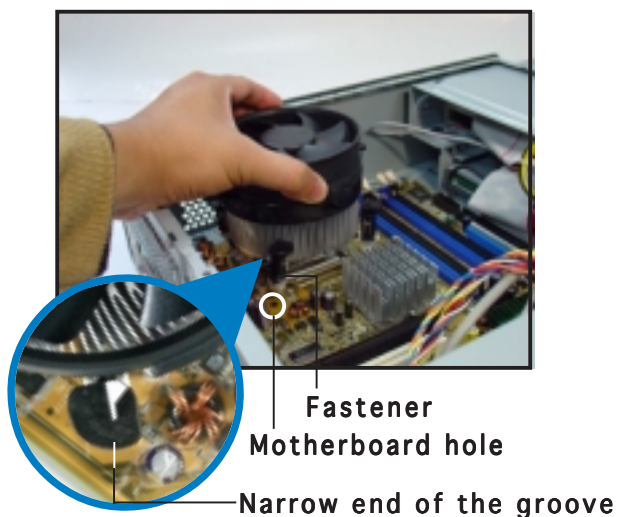


6. Close the load plate, then lock the load lever.



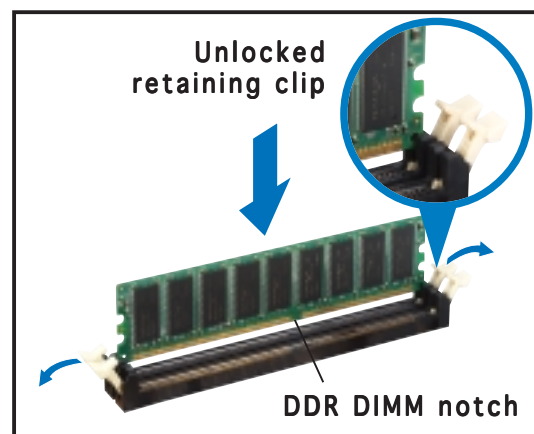
Reinstalling the CPU fan and heatsink assembly

1. Place the heatsink on top of the installed CPU.
2. Push down the fasteners.
3. Connect the CPU fan cable.



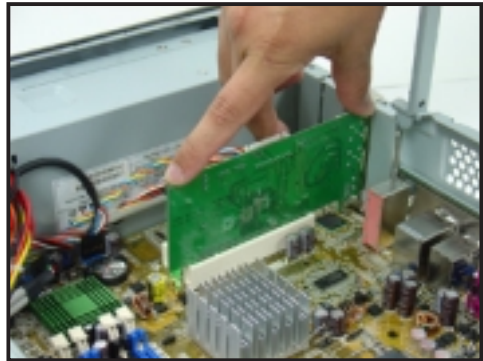
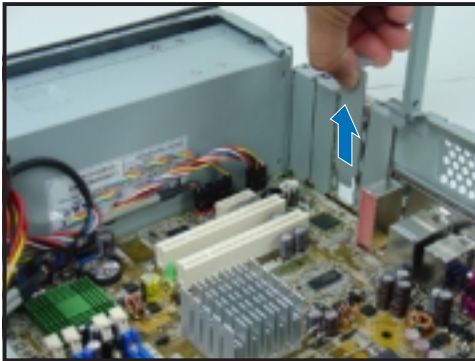
Installing a DIMM

1. Locate the DIMM sockets in the motherboard.
2. Unlock a DIMM socket by pressing the retaining clips outward.
3. Align a DIMM on the socket such that the notch on the DIMM matches the break on the socket.



Installing an expansion card

1. Remove the metal cover opposite the slot that you intend to use.
2. Insert the card connector to the slot, then press the card firmly until it fits in place.

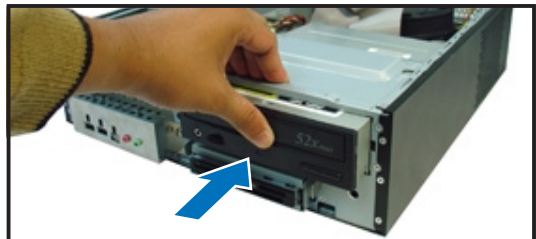


Installing an optical drive

1. Drive a screw on the top right screw hole on both sides of the drive.
2. Connect the IDE and audio cable at the back of the drive.

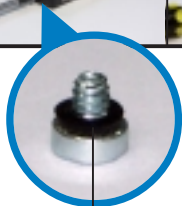


3. Push the drive all the way into the bay until the drive lock clicks.
4. Connect a 4-pin power plug from the power supply unit to the power connector at the back of the drive.



Installing a SATA hard disk drive

1. Drive two screws with rubber washers on both sides of the drive.
2. Connect the SATA signal and power plug at the back of the drive.



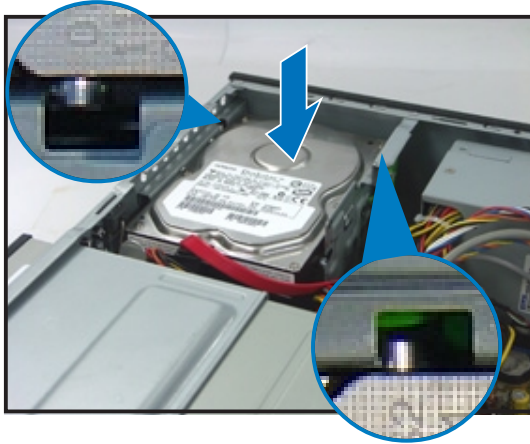
Rubber washer

Power cable and plug

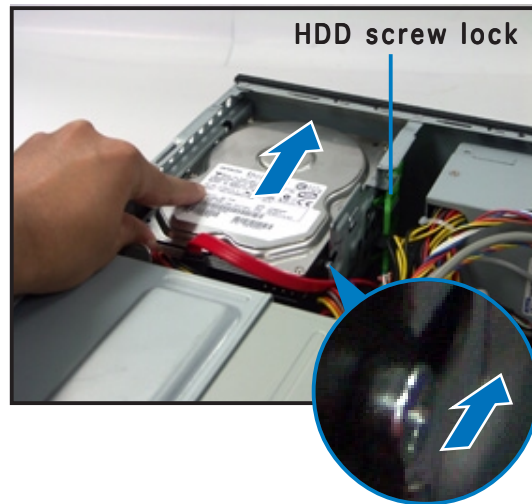
Signal cable and plug



3. Place the HDD on the tray.

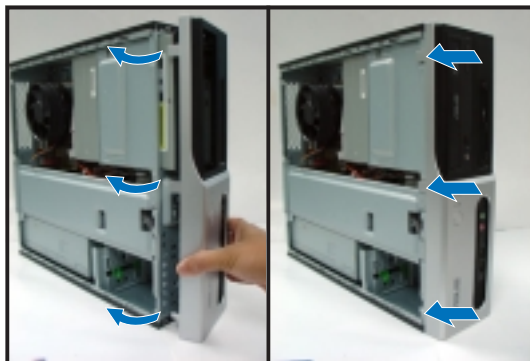


4. When the HDD screws align, push the drive on the bay.

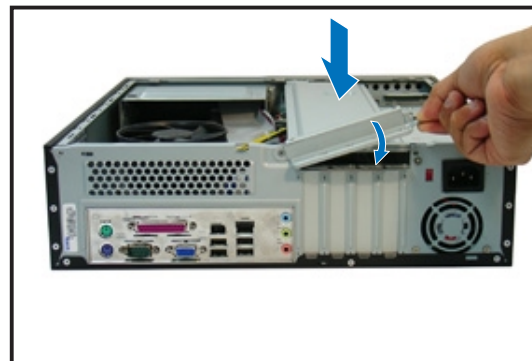


Replacing the covers

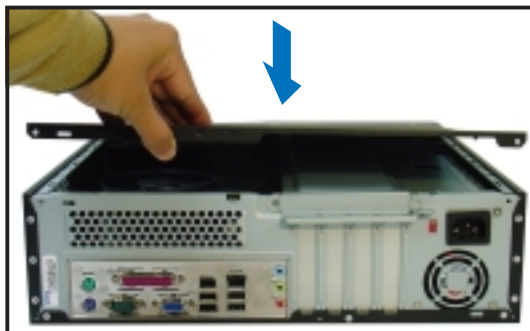
1. Replace the front panel assembly. Remove the 5.25" drive bay cover when you installed an optical drive.



2. Reinstall the metal chassis support and the expansion card lock.



3. Insert the cover hooks to the holes on the chassis side.



4. Push the cover to the direction of the front panel, then replace the cover screws.

