

ASUS[®]

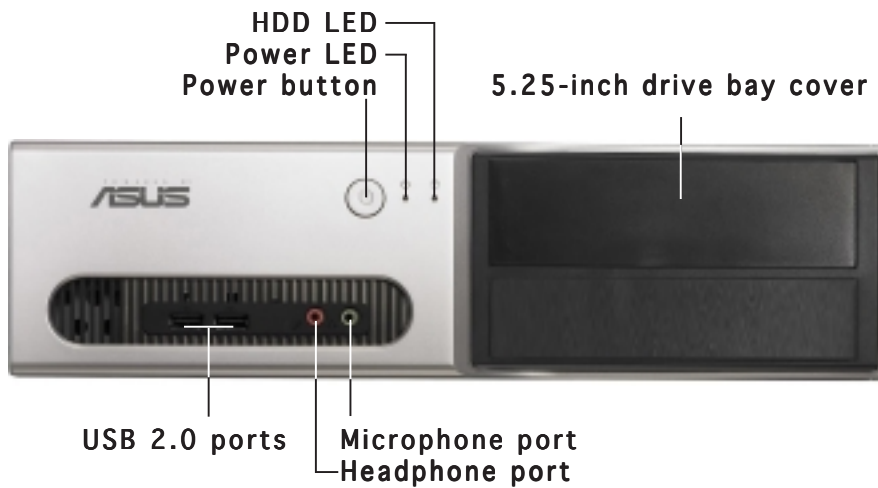
Pundit-AE3

Barebone System

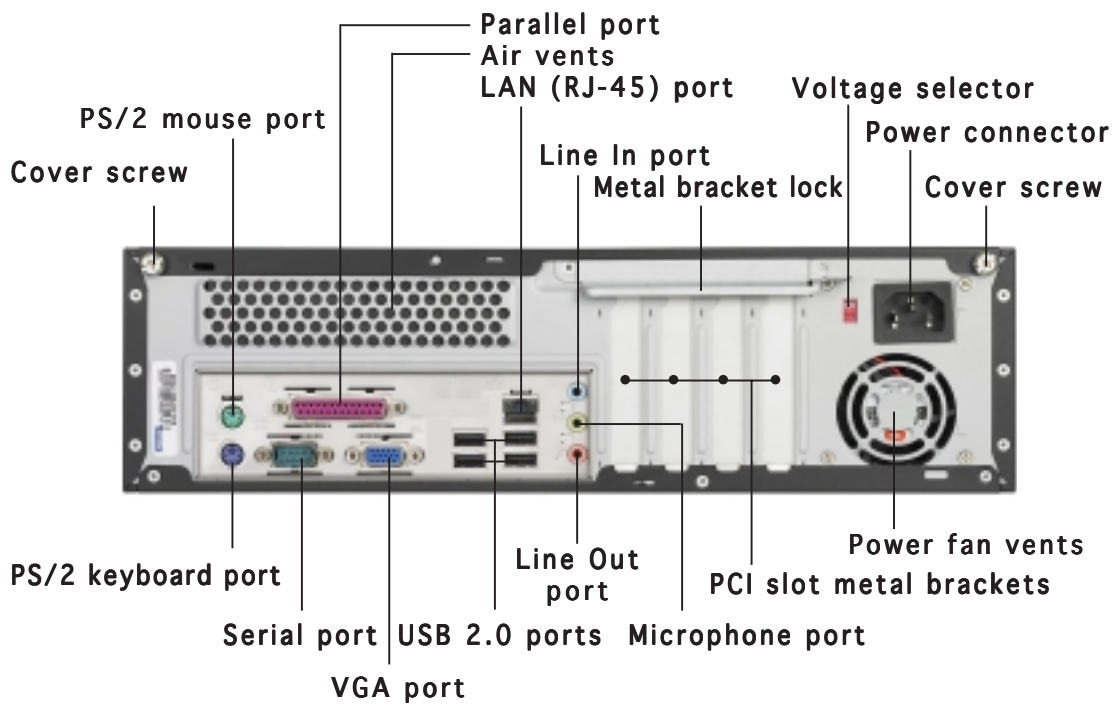
Quick Installation Guide



Front panel features



Rear panel features



Internal components



1. 5.25-inch empty optical drive bay
2. Front panel cover
3. Optical drive lock
4. Hard disk drive bays
5. Hard disk drive lock
6. Power supply unit
7. PCI Express x1 slot
8. PCI slots
9. AGP slot
10. ASUS motherboard
11. Metal bracket lock
12. CPU socket (*under the CPU fan and heatsink assembly*)
13. CPU fan and heatsink assembly (*optional*)
14. DIMM sockets

Selecting the voltage

The system's power supply unit has a 115 V/230 V voltage selector switch located beside the power connector. Use this switch to select the appropriate system input voltage according to the voltage supply in your area.

If the voltage supply in your area is 100-127 V, set the switch to 115 V.

If the voltage supply in your area is 200-240 V, set the switch to 230 V.



Removing the cover

1. Locate two cover screws.



2. Remove the cover screws.



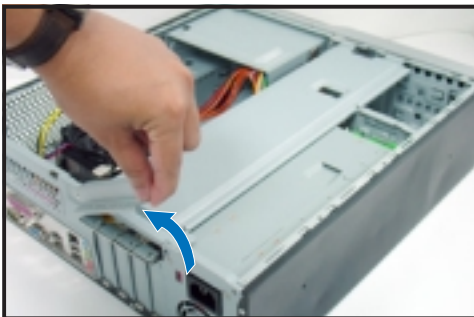
3. Pull the cover.



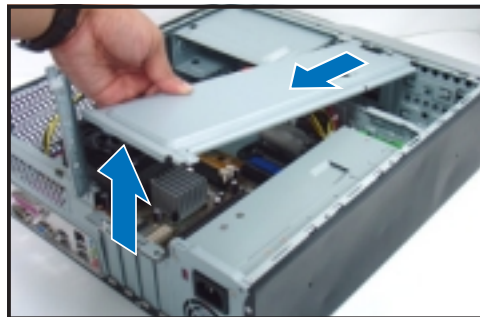
4. Lift the cover, then set aside.



5. Lift the expansion card lock to a 90°-100° angle.



6. Lift the chassis support bracket, then remove.



Removing the front panel assembly

1. Locate the front panel assembly hooks.

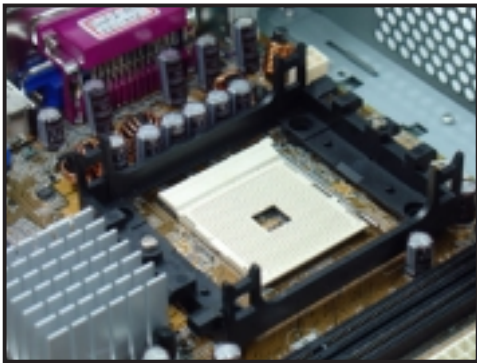


2. Pull the hooks outward to remove.

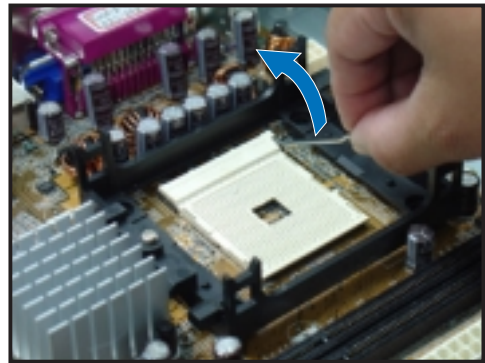


Installing a CPU

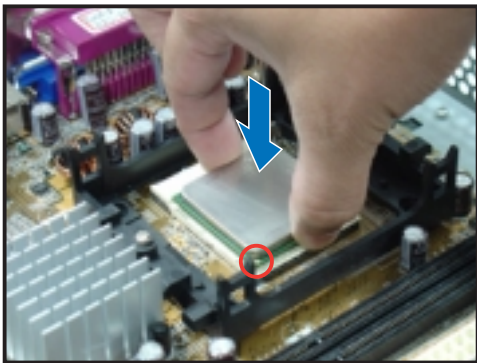
1. Locate the CPU socket.



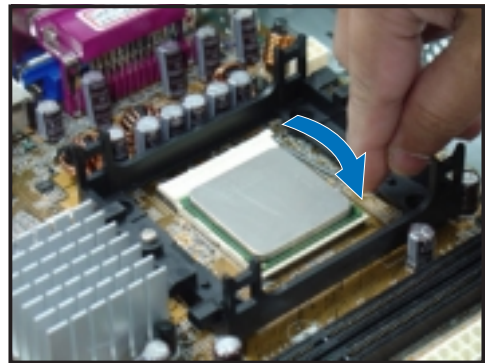
2. Unlock the socket.



3. Insert the CPU to the socket.

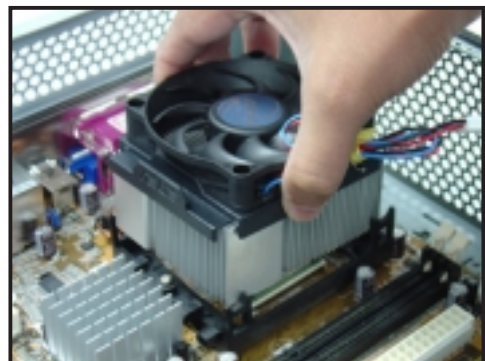


4. Push down the socket lever to secure the CPU.



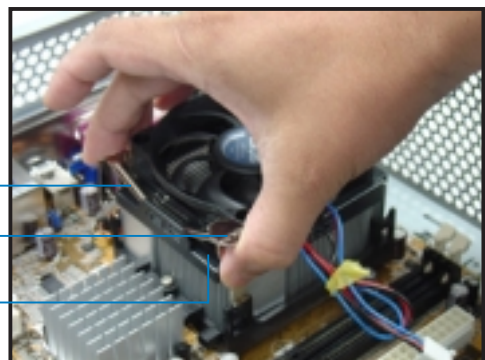
Installing the CPU fan and heatsink assembly (optional)

1. Position the CPU fan and heatsink assembly on top of the CPU.

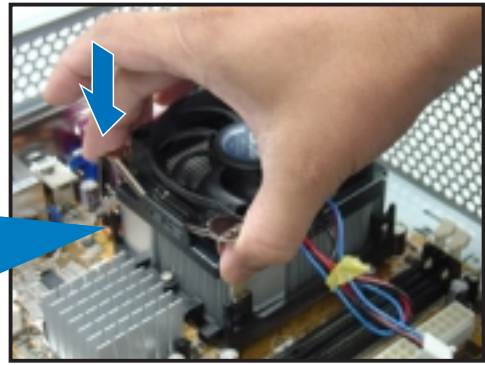
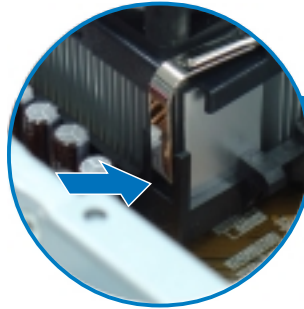


2. Align the retention clip with the rails on the side of the CPU fan.

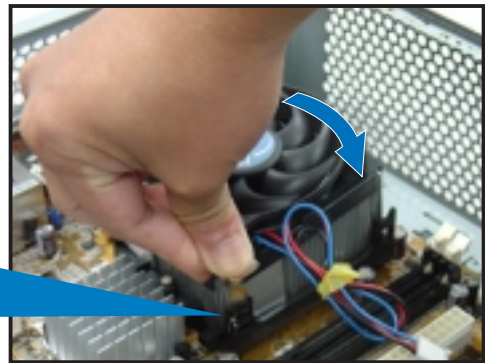
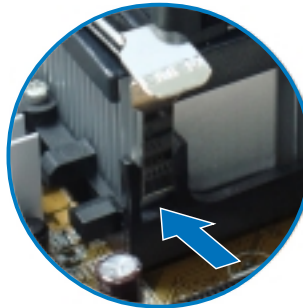
Retention clip
Locking lever
CPU fan side rails



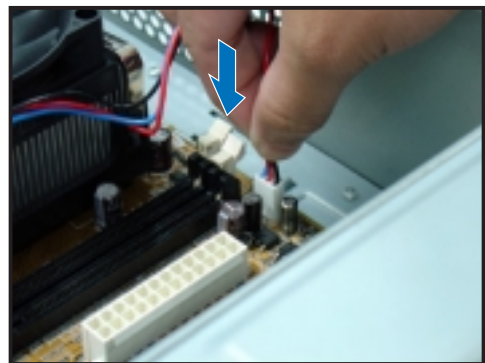
3. Insert one retention clip hook to the hole at the other side of the retention module.



4. Carefully press down the retention clip locking lever until the hook attaches to retention module hole.

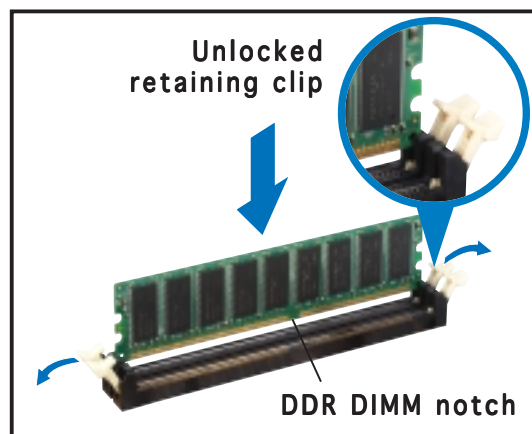


5. Install the second retention clip. Make sure that the retention clip locking levers are on opposite corners of the CPU fan.
6. Connect the CPU fan cable to the CPU fan connector on the motherboard.



Installing a DIMM

1. Locate the DIMM sockets in the motherboard.
2. Unlock a DIMM socket by pressing the retaining clips outward.
3. Align a DIMM on the socket such that the notch on the DIMM matches the break on the socket.



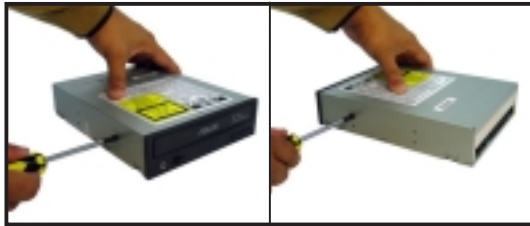
Installing an expansion card

1. Remove the metal cover opposite the slot that you intend to use.
2. Insert the card connector to the slot, then press the card firmly until it fits in place.



Installing an optical drive

1. Drive a screw on the top right screw hole on both sides of the drive.
2. Connect the IDE and audio cable at the back of the drive.



3. Push the drive all the way into the bay until the drive lock clicks.
4. Connect a 4-pin power plug from the power supply unit to the power connector at the back of the drive.



Installing a SATA hard disk drive

1. Drive two screws with rubber washers on both sides of the drive.
2. Connect the SATA signal and power plug at the back of the drive.



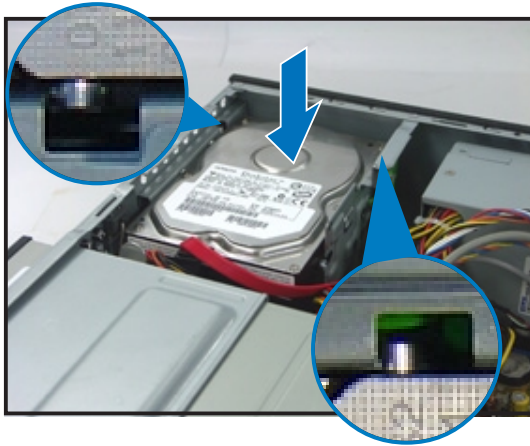
Rubber washer

Power cable and plug

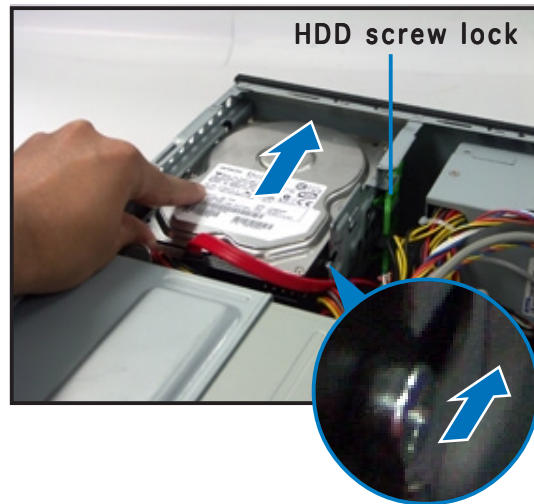
Signal cable and plug



3. Place the HDD on the tray.



4. When the HDD screws align, push the drive on the bay.



Replacing the covers

1. Replace the front panel assembly. Remove the 5.25" drive bay cover when you installed an optical drive.



2. Reinstall the metal chassis support and the expansion card lock.



3. Insert the cover hooks to the holes on the chassis side.



4. Push the cover to the direction of the front panel, then replace the cover screws.

